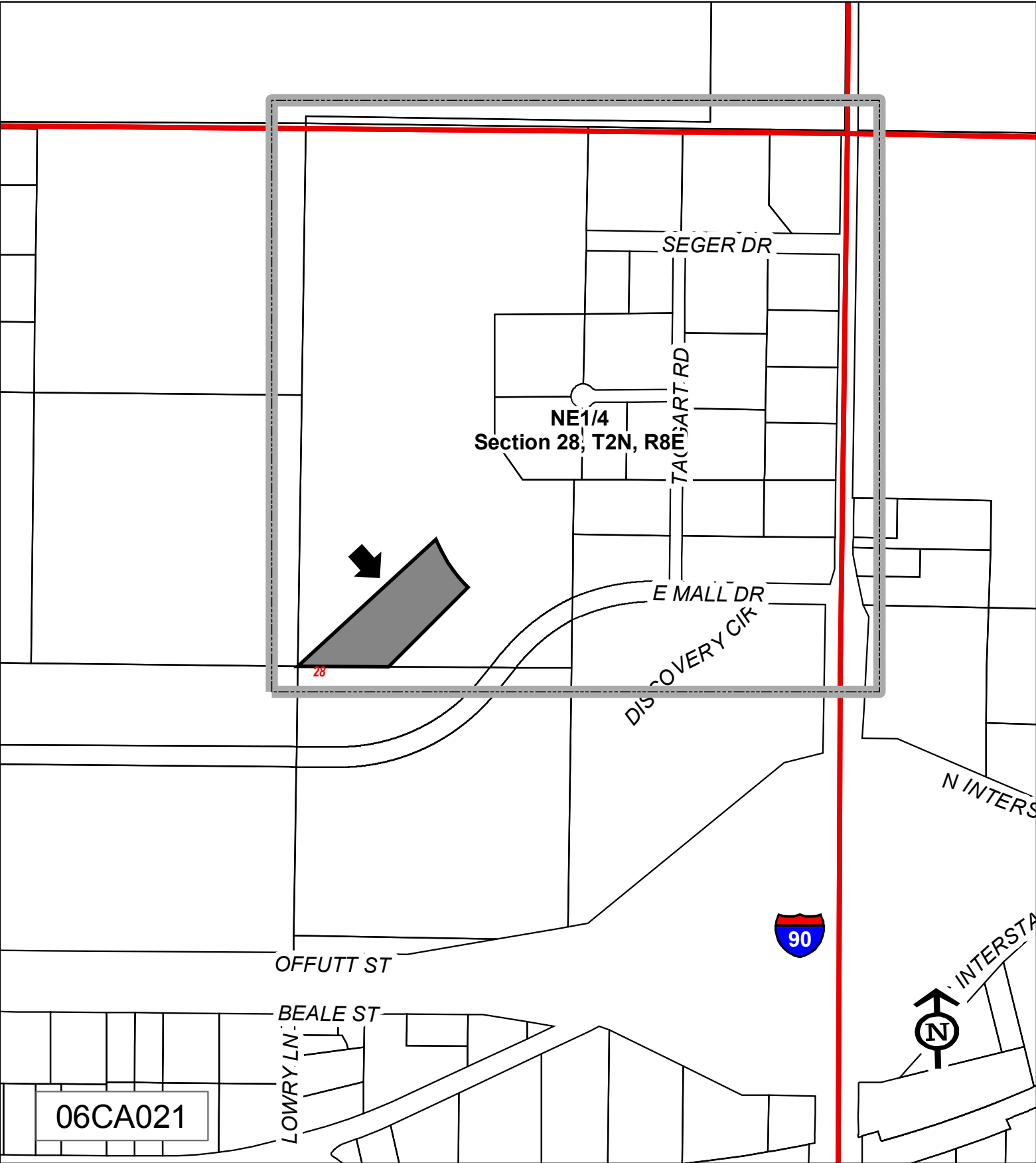


# "Exhibit A" to the Resolution Amending the Comprehensive Plan of the City of Rapid City



NE 1/4  
Section 28, T2N, R8E

SEGER DR

TAUBART RD

E MALL DR

DISCOVERY CIR

OFFUTT ST

BEALE ST

LOWRY LN

N INTERS

INTERSTA



06CA021