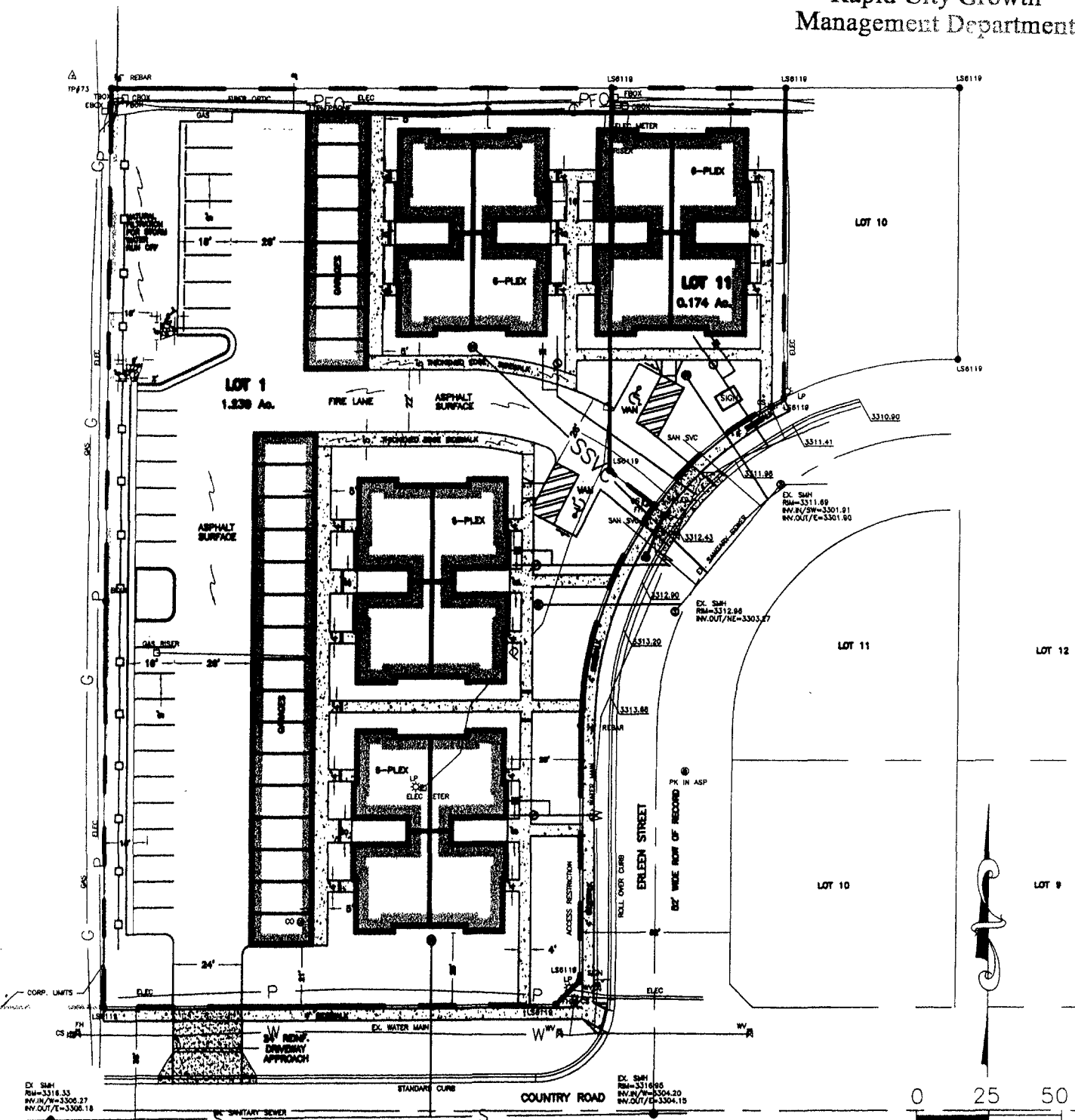


THE BELLEVIEW CONDOS

LOT 11 BLOCK 4, & LOT 1 BLOCK 5, OF KATELAND SUBDIVISION
 LOCATED IN THE SE 1/4 OF THE SW 1/4,
 SECTION 13, T2N, R7E, BHM,
 RAPID CITY, PENNINGTON COUNTY, SOUTH DAKOTA JUL 14 2006

Rapid City Growth
 Management Department



0 25 50

SCALE: 1" = 50'
 JULY 7, 2006

EX. SAN
 RM=3318.35
 INV./N/W=3306.27
 INV./E=3306.18

EX. SAN
 RM=3310.05
 INV./N/W=3304.20
 INV./E=3304.15

TP#72

TP#72