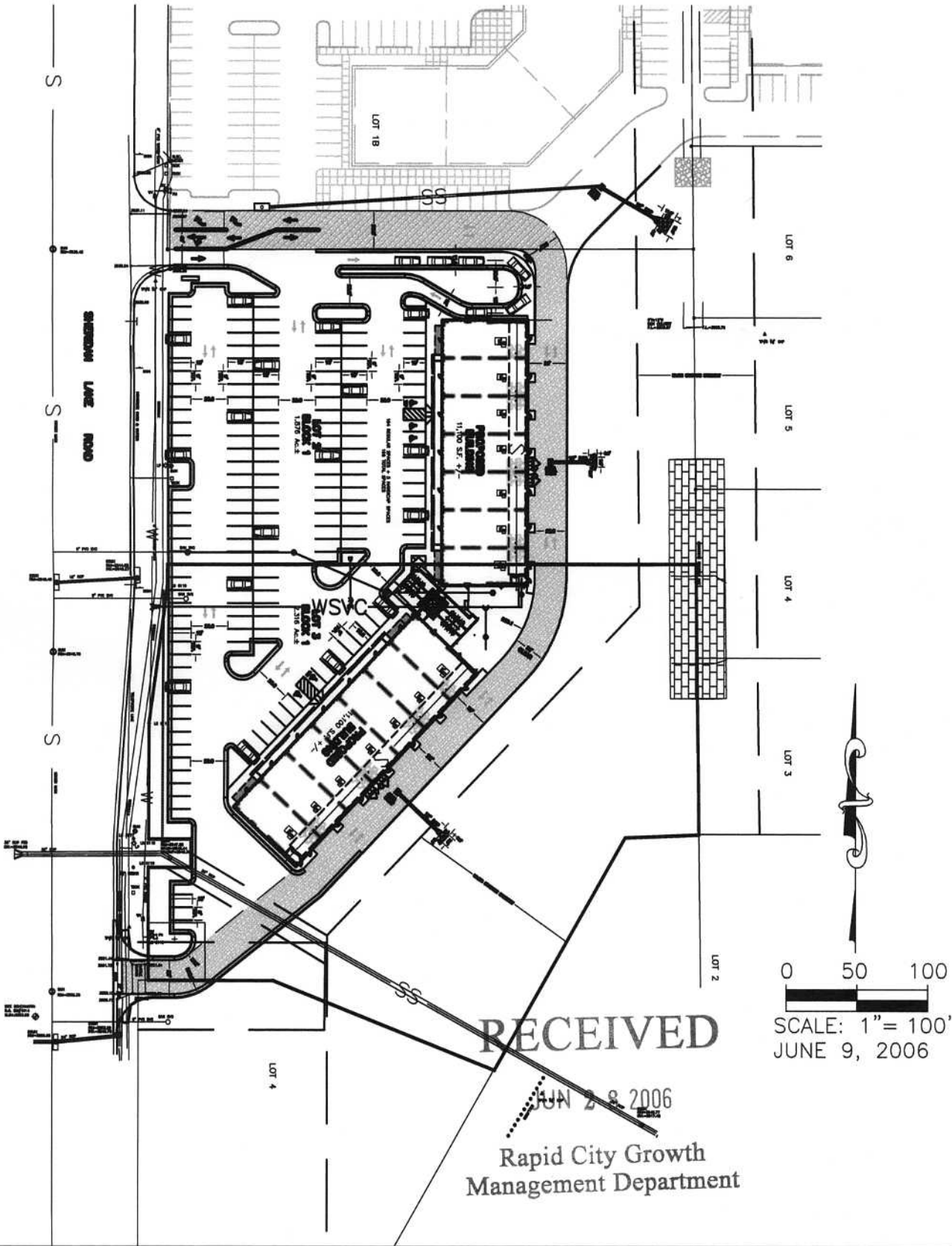


### SITE PLAN

LOT 2 AND LOT 3 OF BLOCK 1,  
STONEY CREEK SOUTH SUBDIVISION,  
LOCATED IN THE NW<sup>1</sup>/<sub>4</sub> OF THE SW<sup>1</sup>/<sub>4</sub> AND THE SW<sup>1</sup>/<sub>4</sub> OF THE SW<sup>1</sup>/<sub>4</sub>,  
SECTION 22, T1N, R7E, B.H.M.  
RAPID CITY, PENNINGTON COUNTY, SOUTH DAKOTA



C:\DRAWINGS\3066\PLAN-3066.DWG, 8X11, 6/28/2006 9:11:36 AM