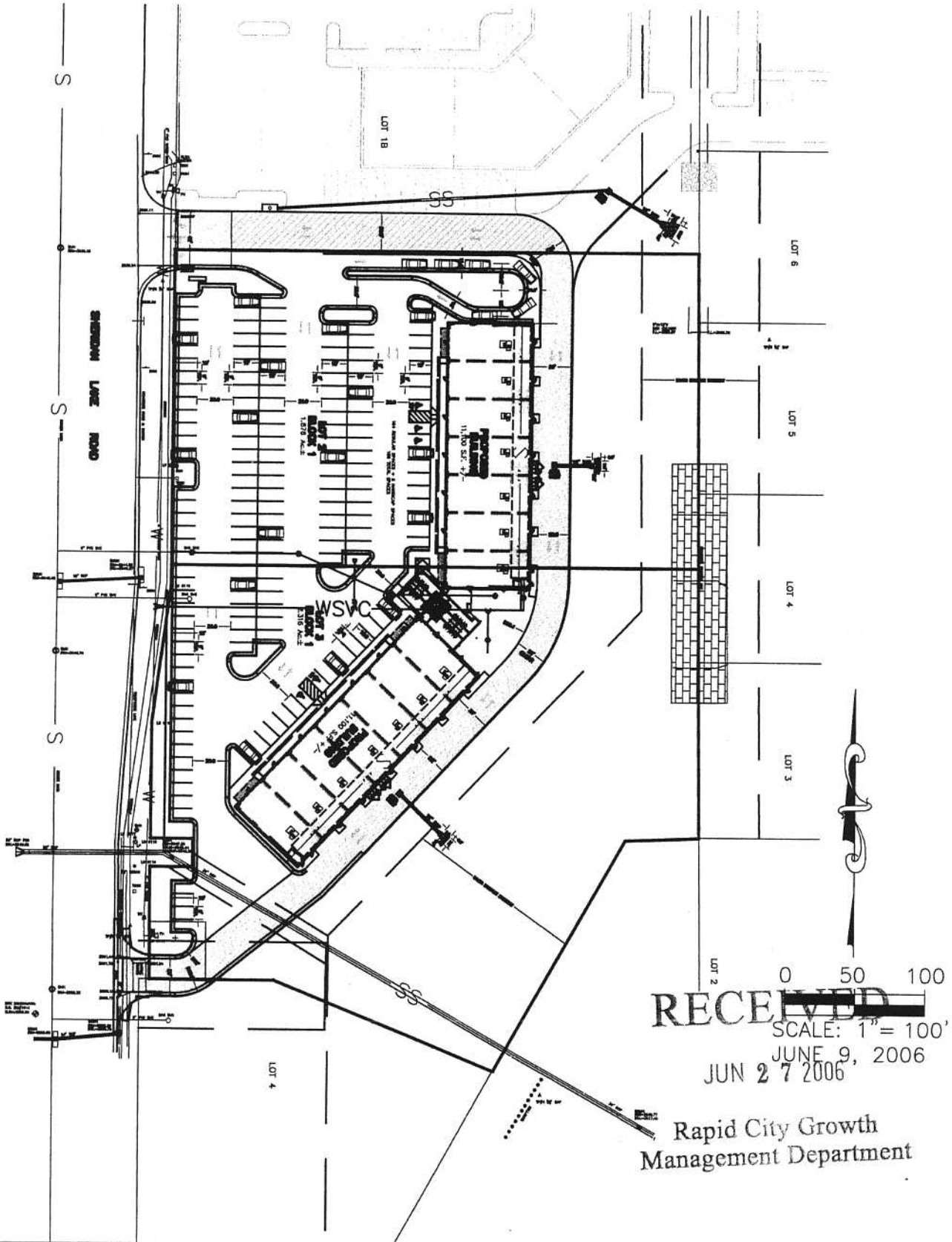


SITE PLAN

LOT 2 AND LOT 3 OF BLOCK 1,
STONEY CREEK SOUTH SUBDIVISION,
LOCATED IN THE NW¼ OF THE SW¼ AND THE SW¼ OF THE SW¼,
SECTION 22, T1N, R7E, B.H.M.
RAPID CITY, PENNINGTON COUNTY, SOUTH DAKOTA



RECEIVED
SCALE: 1" = 100'
JUN 27 2006

Rapid City Growth
Management Department