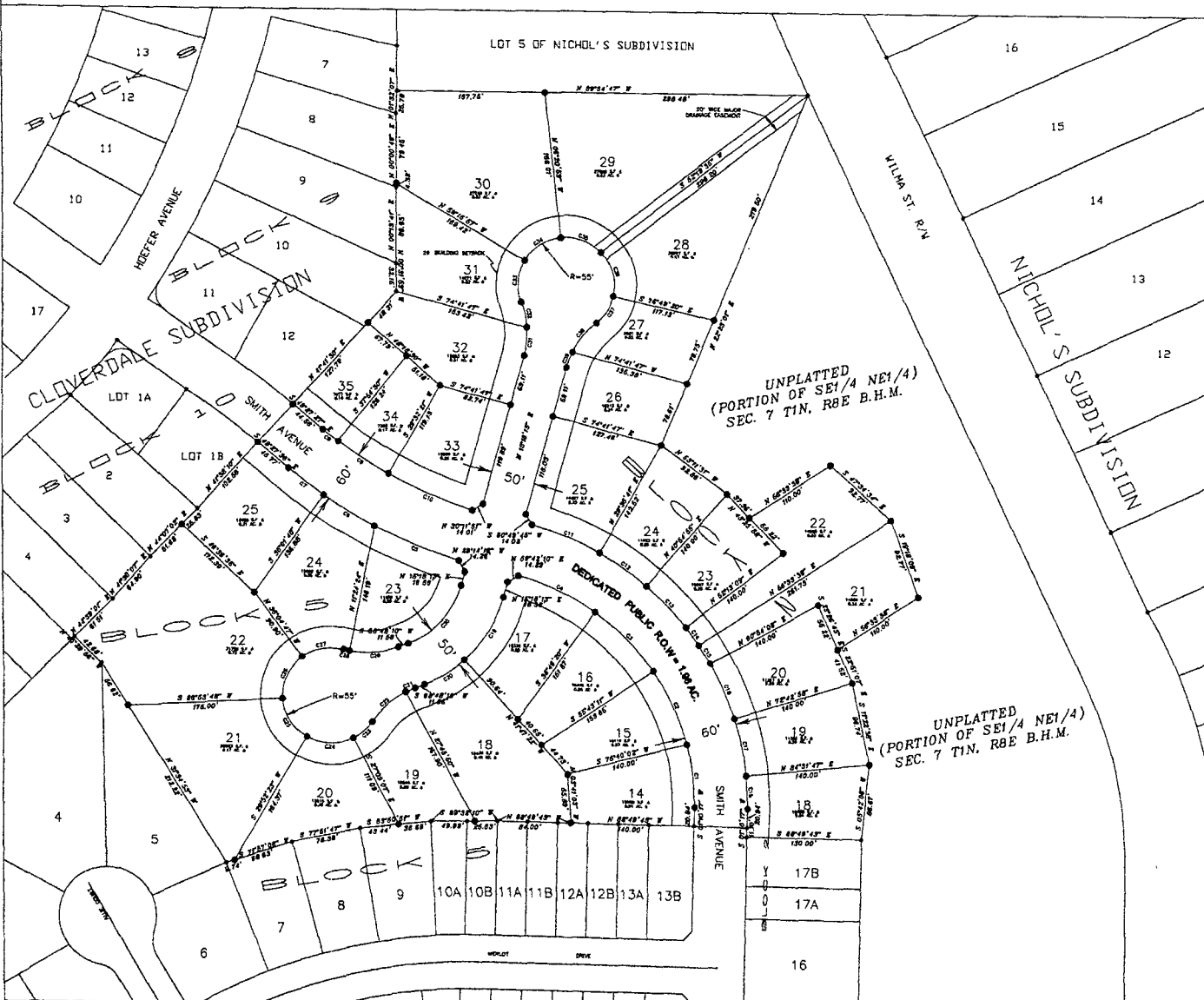


LOTS 18 THROUGH 35, BLOCK 2; LOTS 14 THROUGH 25, BLOCK 5; PARK MEADOWS SUBDIVISION  
 A PORTION OF THE SE 1/4 OF THE NE 1/4; SECTION 7; T1N, R8E, B.H.M., RAPID CITY, PENNINGTON COUNTY, SOUTH DAKOTA



DATE	RECORD	AC. LEGAL	ADJ. LEGAL	CHG. BEARING	DETA. AREA
01	210.00	22.00	22.00	N 82°54'47" W	18.9717
02	210.00	22.00	22.00	N 82°54'47" W	18.9717
03	210.00	22.00	22.00	N 82°54'47" W	18.9717
04	210.00	22.00	22.00	N 82°54'47" W	18.9717
05	210.00	22.00	22.00	N 82°54'47" W	18.9717
06	210.00	22.00	22.00	N 82°54'47" W	18.9717
07	210.00	22.00	22.00	N 82°54'47" W	18.9717
08	210.00	22.00	22.00	N 82°54'47" W	18.9717
09	210.00	22.00	22.00	N 82°54'47" W	18.9717
10	210.00	22.00	22.00	N 82°54'47" W	18.9717
11	210.00	22.00	22.00	N 82°54'47" W	18.9717
12	210.00	22.00	22.00	N 82°54'47" W	18.9717
13	210.00	22.00	22.00	N 82°54'47" W	18.9717
14	210.00	22.00	22.00	N 82°54'47" W	18.9717
15	210.00	22.00	22.00	N 82°54'47" W	18.9717
16	210.00	22.00	22.00	N 82°54'47" W	18.9717
17	210.00	22.00	22.00	N 82°54'47" W	18.9717
18	210.00	22.00	22.00	N 82°54'47" W	18.9717
19	210.00	22.00	22.00	N 82°54'47" W	18.9717
20	210.00	22.00	22.00	N 82°54'47" W	18.9717
21	210.00	22.00	22.00	N 82°54'47" W	18.9717
22	210.00	22.00	22.00	N 82°54'47" W	18.9717
23	210.00	22.00	22.00	N 82°54'47" W	18.9717
24	210.00	22.00	22.00	N 82°54'47" W	18.9717
25	210.00	22.00	22.00	N 82°54'47" W	18.9717
26	210.00	22.00	22.00	N 82°54'47" W	18.9717
27	210.00	22.00	22.00	N 82°54'47" W	18.9717
28	210.00	22.00	22.00	N 82°54'47" W	18.9717
29	210.00	22.00	22.00	N 82°54'47" W	18.9717
30	210.00	22.00	22.00	N 82°54'47" W	18.9717
31	210.00	22.00	22.00	N 82°54'47" W	18.9717
32	210.00	22.00	22.00	N 82°54'47" W	18.9717
33	210.00	22.00	22.00	N 82°54'47" W	18.9717
34	210.00	22.00	22.00	N 82°54'47" W	18.9717
35	210.00	22.00	22.00	N 82°54'47" W	18.9717



- NOTES:
- All major drainage easements shown hereon shall be kept free of all obstructions including but not limited to buildings, walls, fences, hedges, trees and shrubs. These easements grant to all public authorities the right to construct, operate, maintain, inspect and repair such improvements and structures as it deems essential to facilitate drainage from any source.
  - Building setback requirements are as stated in the zoning ordinance.
  - Utility and Minor Drainage Easements - 8' on the interior side of all front, side and rear lot lines.
  - Total right-of-way dedicated by this plat: 1.68 acres.
  - Base of Bearing: record bearing of N 82°54'47" W previously platted south lot line of Lot 2, of Nichol's Subdivision.
  - Pursuant to SDCL 9-3-8.1 and 9-3-2, The Developer of the property described within this Plat shall be responsible for providing any notice of the State, including groundwater, located adjacent to or within each platted area from pollution from sewage from such subdivision and shall in possession of such protection conform to and follow all regulations of the state of South Dakota Department of Environment and Natural Resources relating to the same.