

# LOTS 6A AND 6B OF BLOCK 18, TRAILWOOD VILLAGE

LOCATED IN THE E 1/2 OF THE SE 1/4,  
SECTION 10, T1N, R8E, B.H.M.,  
PENNINGTON COUNTY, SOUTH DAKOTA

JUN 8 2006

Rapid City Growth  
Management Department

SAVANNAH STREET  
52' R.O.W. OF RECORD

10' WIDE PLANTING SCREEN  
EASEMENT AS SHOWN IN PLAT  
BOOK 32 PAGE 154.

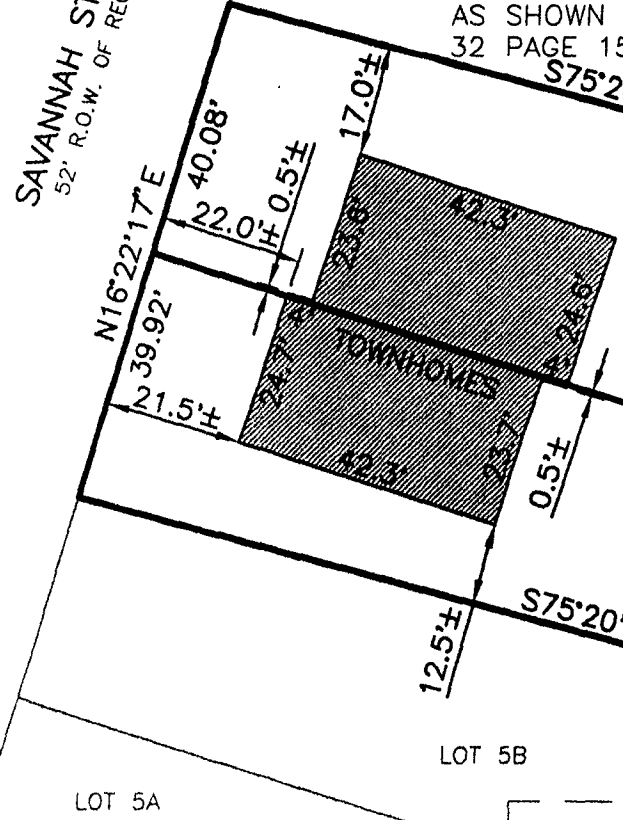
8' WIDE UTILITY EASEMENT  
AS SHOWN IN PLAT BOOK  
32 PAGE 154.

DRAINAGE EASEMENT OF  
RECORD AS SHOWN IN  
MISC. BOOK 65, PAGE  
3282

LOT 7A  
S75°20'08"E 163.85'  
  
LOT 6A  
0.174 Ac±  
\*(3127.00)

LOT 6B  
0.148 Ac±  
\*(3127.00)

RESERVOIR ROAD  
VARIABLE WIDTH RIGHT-OF-WAY  
OF RECORD  
  
AREA OF RESERVOIR ROAD DEDICATED TO THE  
PUBLIC AS SHOWN IN PLAT BOOK 32 PAGE 154.



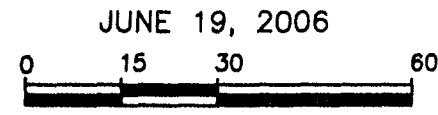
ACCESS RESTRICTION AS SHOWN  
IN PLAT BOOK 32 PAGE 154.

"Access Restrictions" shown hereon define locations  
where no approach or access is allowed onto adjacent  
right-of-way.

\*(Elevation) indicates lowest opening elevation for all  
structures on specified lot. Elevations shown on plat of  
Lots 6A and 6B supersede elevations stated in Plat Book  
32, Page 154.

NOTE: At the time of survey the plat of Lots 6A, 6B, Lot 8A, and 8B of  
Block 18 of Trailwood Village has not been filed in the Office of the  
Pennington County Register Of Deeds. The lot configuration, easements and  
restrictions shown hereon, may be subject to revision prior to approval and  
filing of the final plat.

Utility and Minor Drainage easements: 8' on the interior sides of  
all lot lines, except where major drainage easements exist, and  
excepting the lot line common to Lots 6A and 6B of Block 18.  
This lot line shall have a 6' exterior maintenance easement on



JUNE 19, 2006

SCALE: 1" = 30'