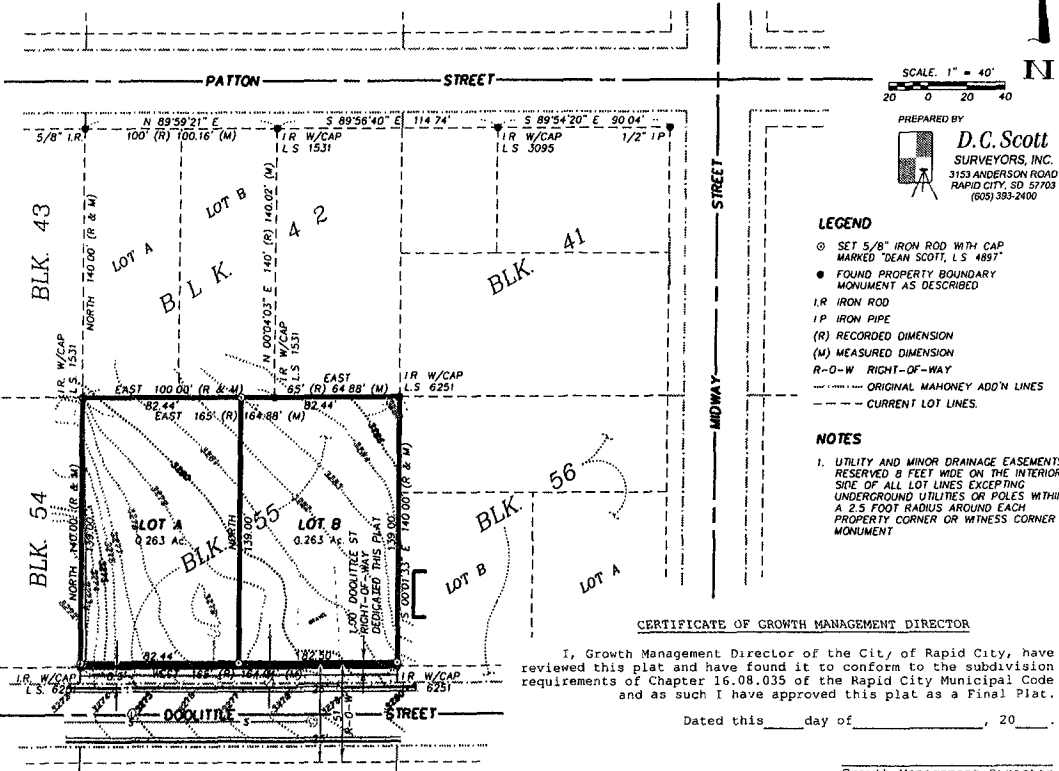


**PRELIMINARY PLAT OF**

**LOT A AND LOT B OF BLOCK 55 OF THE AMENDED PLAT OF MAHONEY ADDITION  
AND DEDICATED DOOLITTLE STREET RIGHT-OF-WAY  
(FORMERLY BLOCK 55 OF THE AMENDED PLAT OF MAHONEY ADDITION LESS THE SOUTH 8.5 FEET)  
LOCATED IN THE SW 1/4 OF THE SE 1/4 OF SECTION 25,  
TOWNSHIP 2 NORTH, RANGE 7 EAST OF THE BLACK HILLS MERIDIAN,  
RAPID CITY, PENNINGTON COUNTY, SOUTH DAKOTA.**

JUNE, 2006



SCALE: 1" = 40'  
20 0 20 40

PREPARED BY  
**D.C. Scott**  
SURVEYORS, INC.  
3153 ANDERSON ROAD  
RAPID CITY, SD 57703  
(605) 393-2400

- LEGEND**
- ⊙ SET 5/8" IRON ROD WITH CAP MARKED "DEAN SCOTT, L.S. 4897"
  - FOUND PROPERTY BOUNDARY MONUMENT AS DESCRIBED
  - IR IRON ROD
  - IP IRON PIPE
  - (R) RECORDED DIMENSION
  - (M) MEASURED DIMENSION
  - R-O-W RIGHT-OF-WAY
  - ORIGINAL MAHONEY ADD'N LINES
  - - - - - CURRENT LOT LINES.
- NOTES**
1. UTILITY AND MINOR DRAINAGE EASEMENTS RESERVED 8 FEET WIDE ON THE INTERIOR SIDE OF ALL LOT LINES EXCEPTING UNDERGROUND UTILITIES OR POLES WITHIN A 2.5 FOOT RADIUS AROUND EACH PROPERTY CORNER OR WITNESS CORNER MONUMENT

CERTIFICATE OF GROWTH MANAGEMENT DIRECTOR

I, Growth Management Director of the City, of Rapid City, have reviewed this plat and have found it to conform to the subdivision requirements of Chapter 16.08.035 of the Rapid City Municipal Code and as such I have approved this plat as a Final Plat.

Dated this \_\_\_\_\_ day of \_\_\_\_\_, 20\_\_\_\_.

Growth Management Director  
of the City of Rapid City