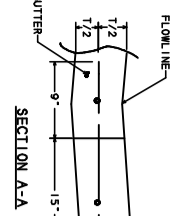


EXISTING FLOWS (E1.1)	DEVELOPED FLOWS (E1.1)	CHANGE (E1.1)
9.2	1.1	-4.7
9.2	1.9	-7.2
9.0	5.6	-5.3
9.0	5.6	-5.8
9.2	1.4	-6.1
9.2	2.4	-9.2
9.0	7.2	-14.7
9.0	7.2	-7.3

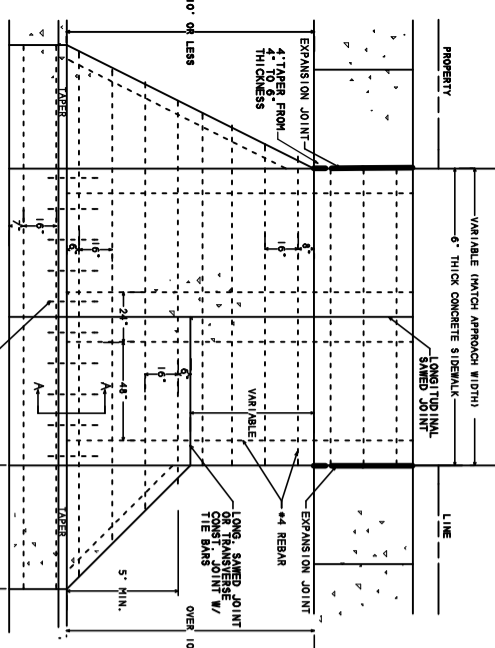
NOTES

TEMPORARY EROSION CONTROL -
 FAL 125 LF OF SILT FENCE IS SHOWN IN THE PLAN FOR PUBLIC WORKS CONSTRUCTION & SEE DETAIL 1 PERMANENT EROSION CONTROL.
 FAL 150 LF OF 6" WIDE 1'-4" HAN
 FAL 800 SQ. FT. OF S-2 SUPERIOR EROSION CONTROL SHALL BE INSTALLED ALONG B TO AREA INLET.
 FAL 1000 SQ. FT. OF EQUIVALENT SED/MULCH TO COVER DETENTION POND BOTTOM & ALL SLOPES TO BE CONSTRUCTED. SEE SLOPE SPECIFICATIONS & SEE PLANTING CRITERIA IN ROAD TABLE 7-81



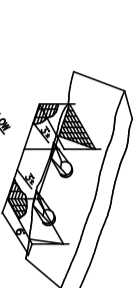
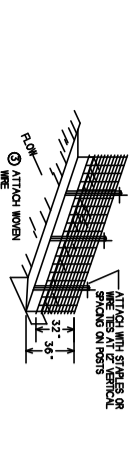
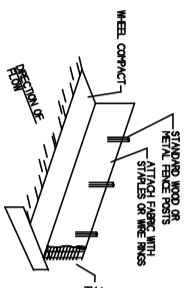
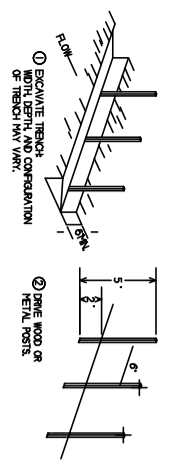
MINIMUM DEPTH OF GRANULAR MATERIAL PLACED UNDER REINFORCED DRIVEWAY APPROACH SHALL BE 4" WHEN REMOVING EXISTING CURB & GUTTER FOR NEW APPROACH CONSTRUCTION. AN EXPANSION JOINT SHALL BE CONSTRUCTED. (SEE JOINT DETAIL)

REINFORCED DRIVEWAY & SUPERIOR SHALL BE PLACED AT ALL ALLEY ENTRANCES AT DRIVEWAYS INTO PROPERTY WHICH IS MULTIFAMILY, COMMERCIAL, LIGHT INDUSTRIAL & HEAVY INDUSTRIAL. A HEAVY COATED REBAR SHALL BE PLACED AS PER DETAIL 4 & HEAVY COATED REBAR SHALL BE PLACED AS PER DETAIL 5. (PROPERTY LINE SIDEWALK SHOWN)



REINFORCED DRIVEWAY APPROACH

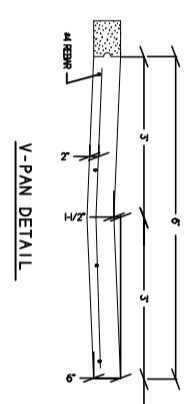
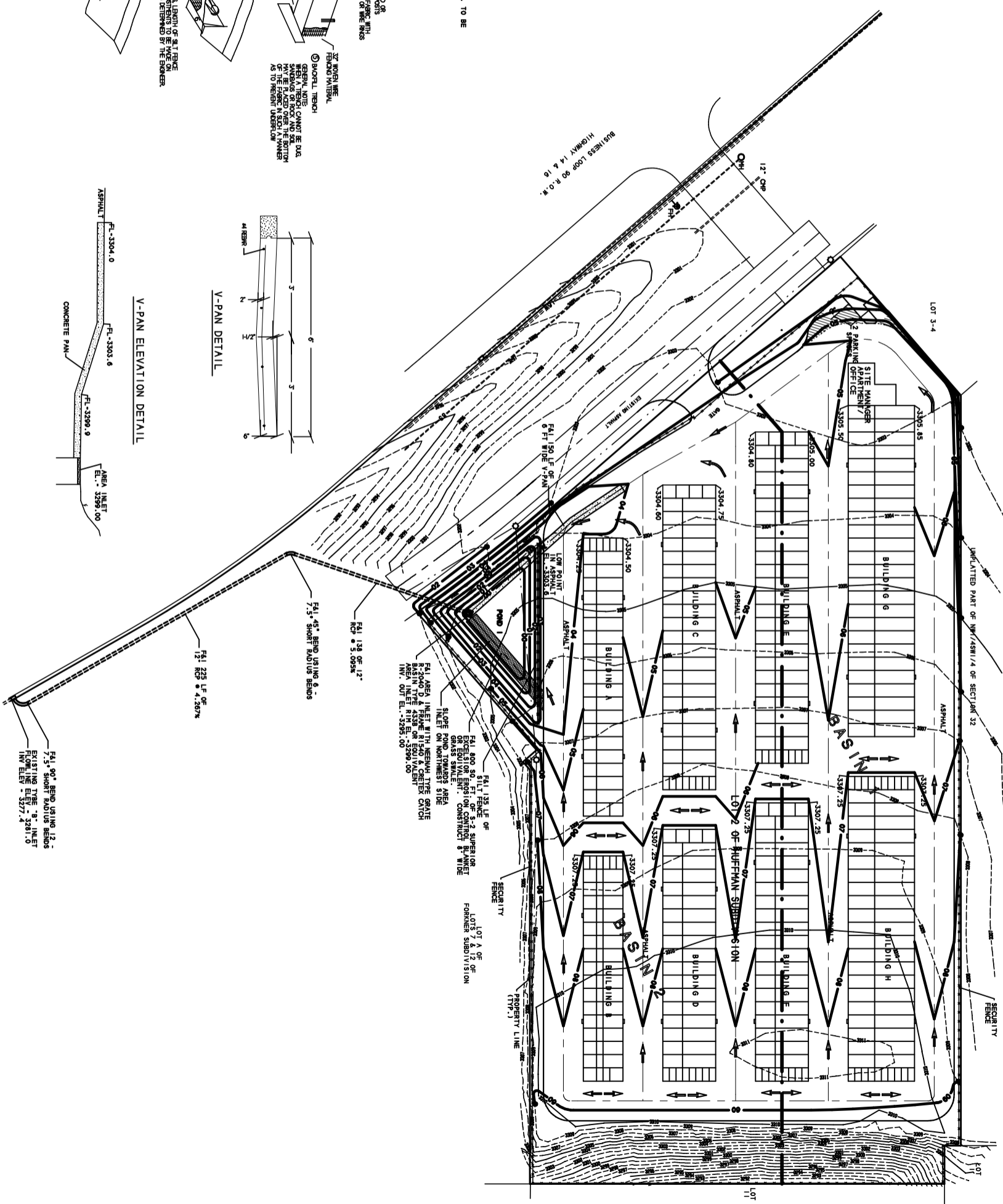
4" X 4" EPOXY COATED REBAR @ 15" O.C. TO BE PLACED BETWEEN P-GUTTER & DRIVEWAY



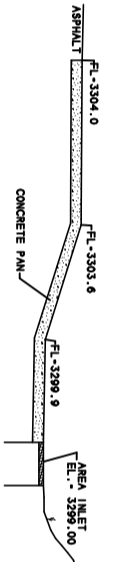
SILT FENCE INSTALLATION

LEGEND

- 3301 1 FOOT CONTOUR
- 3305 5 FOOT CONTOUR
- 3306 PROPOSED CONTOUR
- STREET CENTERLINE
- PROPERTY LINE
- AREA INLET
- DRAINAGE ARROW
- BASIN BOUNDARY LINE
- SILT FENCE



V-PAN ELEVATION DETAIL



SCALE: 1" = 40'
 APRIL 28, 2005
 1" CONTOUR INTERVALS

BRITTON ENGINEERING & LAND SURVEYING, INC
 8035 BLACK HAWK ROAD - SUITE #5
 BLACK HAWK, SD 57718
 PH. (605) 716-7988

LOT 2 OF HUFFMAN SUBDIVISION
 IN THE N1/2 SW1/4 OF SECTION 32
 T2N, R8E, BHM, RAPID CITY
 PENNINGTON COUNTY, SOUTH DAKOTA

GRADING AND EROSION CONTROL PLAN
 CENTURY DEVELOPMENT

Project No: 06-01-686
 Survey By: ...
 Drawn By: thg
 Designed By: mjt
 Checked By: ...
 Date: 05/01/06

2