

06SV040

BASIS OF BEARINGS

17' OF ADDITIONAL RIGHT OF WAY
BEING DEDICATED THIS PLAT
6795 SQ FT OR 0.16 ACRES

LONG VIEW ROAD

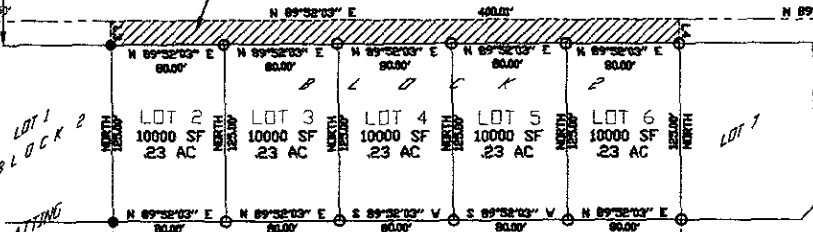
SECTION LINE SECTION 11, T14N, R06E, B14W
SECTION LINE SECTION 14, T14N, R06E, B14W

941.05'

NW1/4

FOUND NW COR OF LOT B
5/8 REBAR WITH CAP
MARKED "FMG-1019"

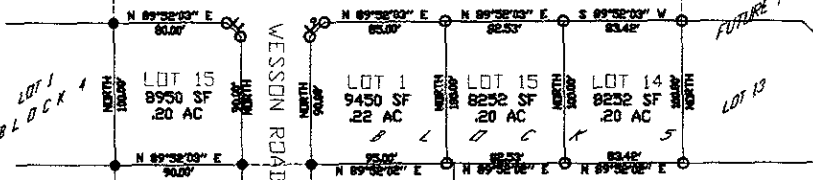
LOT B OF
NE1/4 OF NW1/4



DERRINGER ROAD (49' ROW)

PREVIOUS PLATTING

FUTURE PLATTING



WESSON ROAD (49' ROW)

PREVIOUS PLATTING

NE1/4 OF THE NW1/4
SECTION 14, T14N, R06E, B14W

NOTICE OF HEARING
MAY BE SENT TO:
DAVIS ENGINEERING, INC.
1060 KINGS ROAD
RAPID CITY, SD 57702

