

1" = 100'

June 7, 2006

Basix of Bearings

Assumed from Previous Surveys

and confirmed by

Solar Observation

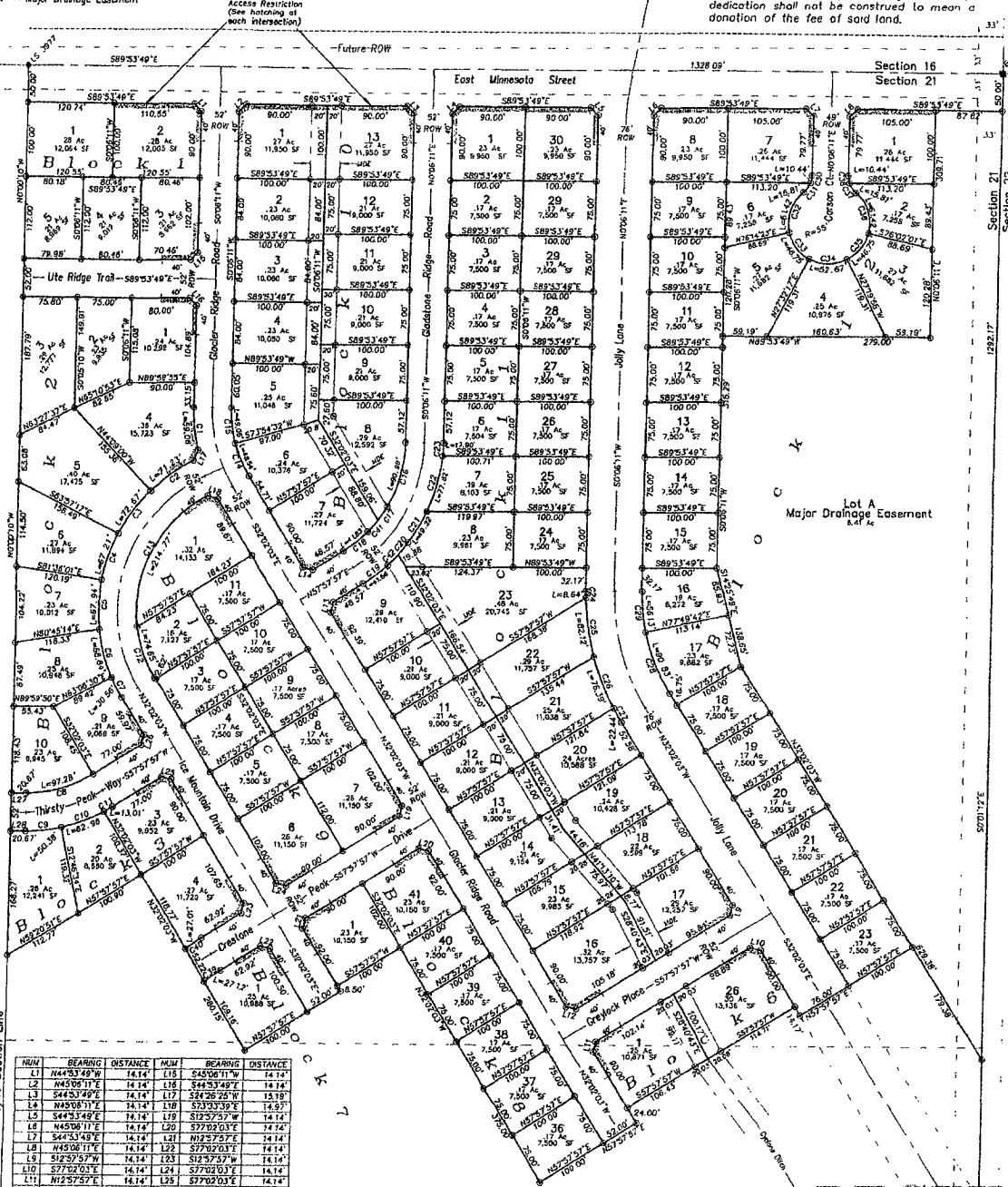
All major drainage easements shown herein shall be kept free of all obstructions including but not limited to buildings walls, fences, hedges, trees & shrubs. These easements grant to all public authorities the right to construct, operate, maintain, inspect, and repair such improvements and structures as it deems necessary to facilitate drainage from any source.

NOTE: The rear lot lines in Block 10 and portions of Block 11 represent the centerline of a 40' wide Major Drainage Easement (aka Cytelch Ditch). The side lot line annotations are to the Witness Corners located at the edge of the easement.

located in the E1/2 NE1/4 of Section 21  
 T1N, R8E, BHM, Rapid City, Pennington County, South Dakota  
 Prepared by:  
 Fisk Land Surveying & Consulting Engineers, Inc.  
 P.O. Box 8164  
 Rapid City, SD 57709  
 (605) 348-1838  
 Project # 08-05-07

Utility and Minor Drainage Easements on the interior sides of lot lines

- = Found Survey Monument as noted
- = Found Brass Cap (BLM - 1849)
- = Set Rebar/Cop "RW FISK LS 6565"
- = Major Drainage Easement



1/16 Section Line

NUM	BEARING	DISTANCE	NUM	BEARING	DISTANCE
L1	N44°53'49"W	14.14	L15	S45°06'11"W	14.14
L2	N45°06'11"E	14.14	L16	S44°53'49"W	14.14
L3	N45°03'49"E	14.14	L17	S44°56'11"W	13.19
L4	N45°08'11"E	14.14	L18	S43°03'39"E	13.69
L5	S44°53'49"E	14.14	L19	S12°25'27"W	14.14
L6	N45°06'11"E	14.14	L20	S77°02'03"E	14.14
L7	S44°53'49"E	14.14	L21	N82°57'57"W	14.14
L8	N45°06'11"E	14.14	L22	S77°02'03"E	14.14
L9	S12°25'27"W	14.14	L23	S12°25'27"W	14.14
L10	S77°02'03"E	14.14	L24	S77°02'03"E	14.14
L11	N82°57'57"W	14.14	L25	S77°02'03"E	14.14
L12	N77°02'03"W	14.14	L26	S12°25'27"W	14.14
L13	N12°25'57"E	14.14	L27	N89°58'50"E	20.67
L14	S77°02'03"E	14.14	L28	N89°58'50"E	20.67

NUM	DELTA	ARC	RADIUS	BEARING	DISTANCE	NUM	DELTA	ARC	RADIUS	BEARING	DISTANCE
C1	180°31'	71.23	226.00	S72°30'00"E	58.69	C2	169°42'	73.63	226.00	N14°30'00"E	73.43
C2	180°31'	71.23	226.00	S54°54'44"W	76.82	C3	4°32'00"	17.80	226.00	N42°22'12"E	17.80
C3	180°25'	72.67	226.00	S38°58'19"W	72.35	C4	4°32'00"	17.80	226.00	N30°37'42"E	8.64

RECEIVED