

06PL080

37.00'
N 0°11'16" E
REVISION THIS PLAT
40' PERMANENT
DRAINAGE EASEMENT
BOOK 152, PAGE 9516

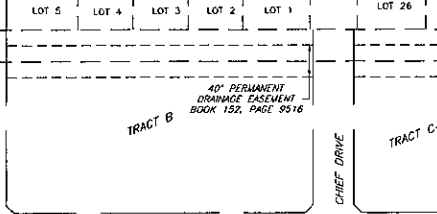
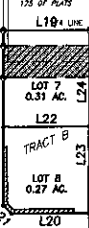
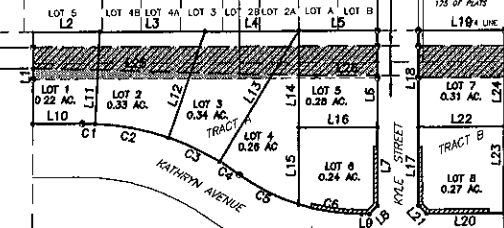
40' WIDE POWER EASEMENT
BLACK HILLS POWER AND LIGHT

26.02'
N 0°27'35" E
REVISION THIS PLAT

CHMH SUBD

NORTHBRIDGE SUBD
BOOK 37 PAGE 103 OF
PLATS

NORTHBRIDGE SUBD
BOOK 26 PAGE 178 OF
PLATS



LOT 1 OF NEW PARK SUBD
BOOK 23 PAGE 83 OF PLATS

LOT H-1
BOOK
PAGE

UNPLATTED PORTION OF THE
NE 1/4 SW 1/4 SECTION 24

