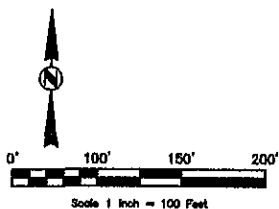


06PL073

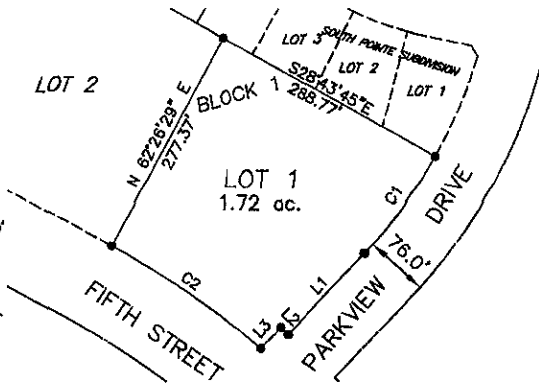
# PLAT OF FIFTH STREET OFFICE PLAZA

LOT 1, BLOCK 1;

LOCATED IN THE NE1/4 OF SECTION 24,  
T.1N., R.7E., B.H.M., RAPID CITY, PENNINGTON COUNTY, SOUTH DAKOTA

**LEGEND**

- Denotes set 5/8" rebar with survey cap marked "ARLETH 3977"

**NOTES:**

- MINOR DRAINAGE AND UTILITY EASEMENTS ARE HEREBY ESTABLISHED 5' WIDE ON THE INTERIOR SIDE OF ALL LOT LINES AND RIGHT-OF-WAY (EXCEPT WHERE MAJOR DRAINAGE EASEMENTS ARE LOCATED)
- TOTAL PLATTED AREA: 1.72 ACRES;  
LOTS: 1.72 ACRES;
- NON-ACCESS EASEMENTS ARE HEREBY ESTABLISHED ALONG THE FIRST FIFTY FEET OF CORNER LOTS OR AS INDICATED HEREOF.
- ACREAGE SHOWN ON LOTS INCLUDE EASEMENTS

