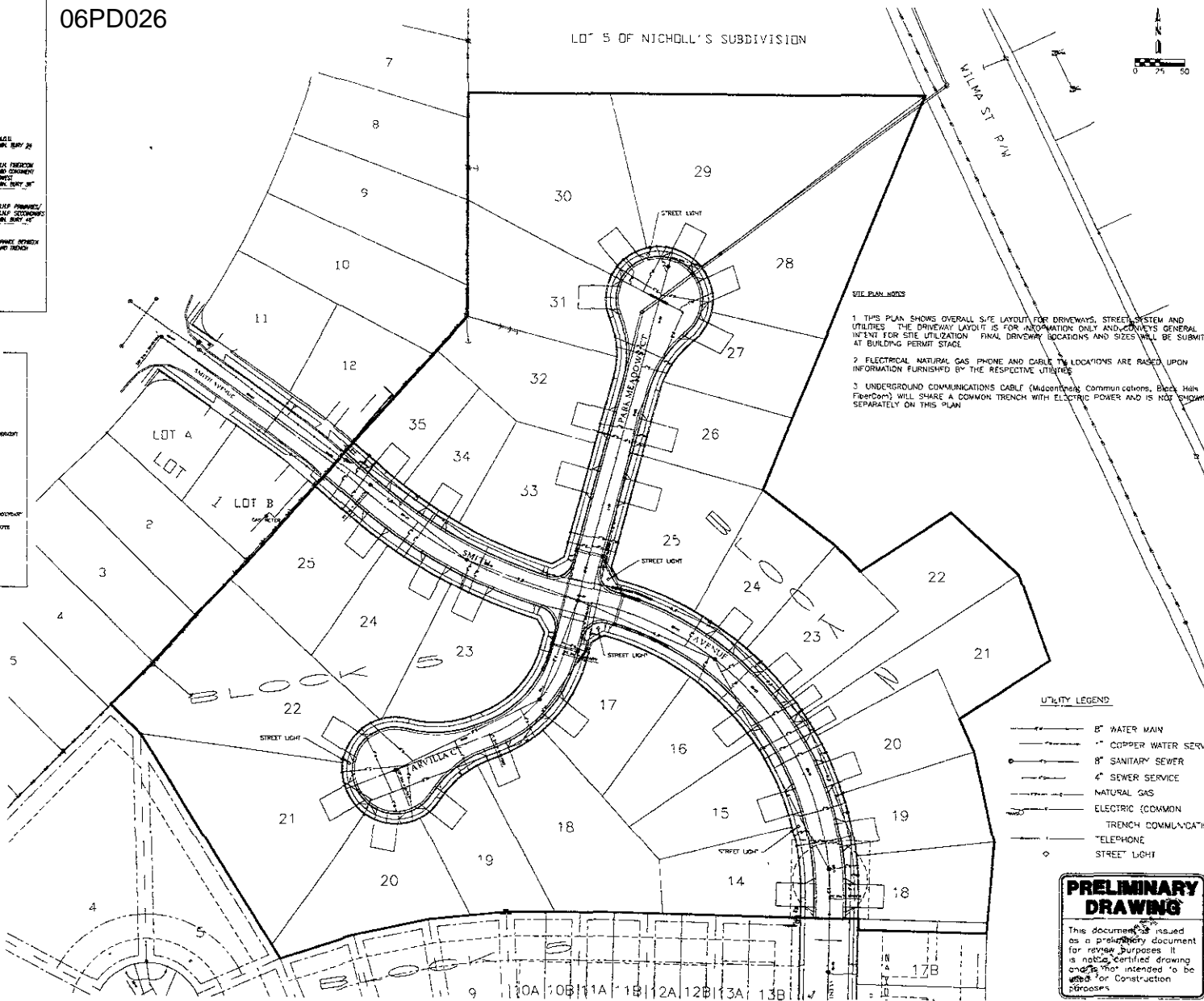
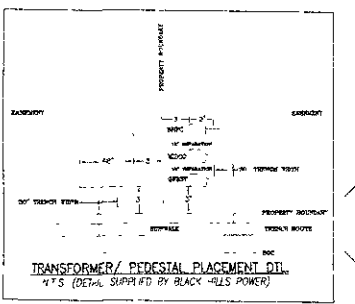
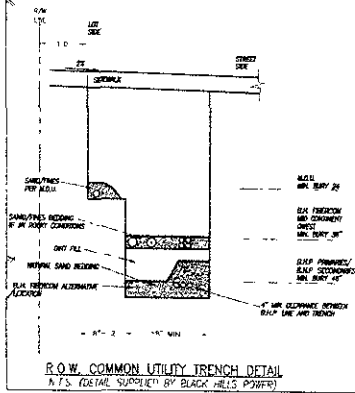


06PD026

LOT 5 OF NICHOLL'S SUBDIVISION



- SITE PLAN NOTES**
1. THIS PLAN SHOWS OVERALL SITE LAYOUT FOR DRIVEWAYS, STREET SYSTEM AND UTILITIES. THE DRIVEWAY LAYOUT IS FOR INFORMATION ONLY AND CONVEYS GENERAL INTENT FOR SITE UTILIZATION. FINAL DRIVEWAY LOCATIONS AND SIZES WILL BE SUBMITTED AT BUILDING PERMIT STAGE.
 2. ELECTRICAL, NATURAL GAS, PHONE AND CABLE TV LOCATIONS ARE BASED UPON INFORMATION FURNISHED BY THE RESPECTIVE UTILITIES.
 3. UNDERGROUND COMMUNICATIONS CABLE (Midcontinent Communications, Black Hills FiberCom) WILL SHARE A COMMON TRENCH WITH ELECTRIC POWER AND IS NOT SHOWN SEPARATELY ON THIS PLAN.

UTILITY CERTIFICATION

THIS PLAN ACCURATELY REPRESENTS OUR COMPANIES PROPOSED UTILITY LAYOUT FOR THE PLANNED SUBDIVISION. SHOWN ACTUAL ROUTES MAY VARY UPON INSTALLATION BASED UPON SITE CONDITIONS AND IMPROVEMENTS.

- BY
- BLACK HILLS POWER AND LIGHT COMPANY
Signed: _____
- BLACK HILLS FIBERCOM
Signed: _____
- QUEST COMMUNICATIONS
Signed: _____
- MIDCONTINENT COMMUNICATIONS
Signed: _____
- MONTANA DAKOTA UTILITIES
Signed: _____

UTILITY LEGEND

	8" WATER MAIN
	1" COPPER WATER SERVICE
	8" SANITARY SEWER
	4" SEWER SERVICE
	NATURAL GAS
	ELECTRIC (COMMON)
	TRENCH COMMUNICATION
	TELEPHONE
	STREET LIGHT

PRELIMINARY DRAWING

This document is issued as a preliminary document for review purposes. It is not a certified drawing and is not intended to be used for construction purposes.