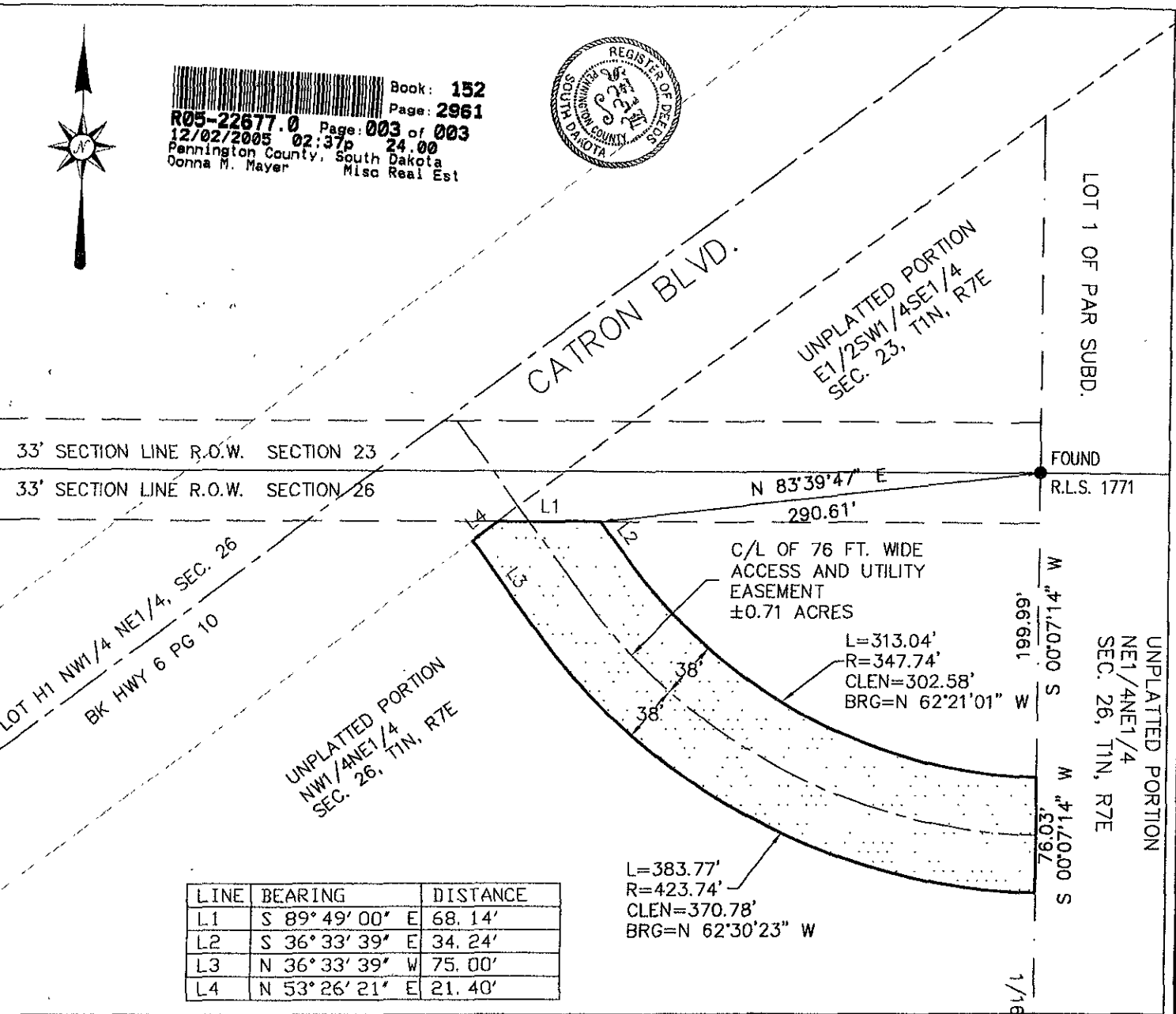


EXHIBIT A

SHOWING A 76 FT. WIDE ACCESS AND UTILITY EASEMENT
 LOCATED IN THE UNPLATTED PORTION OF THE NW1/4NE1/4 OF
 SECTION 26, T1N, R7E, B.H.M., CITY OF RAPID CITY,
 PENNINGTON COUNTY, SOUTH DAKOTA



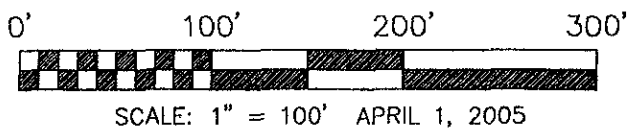
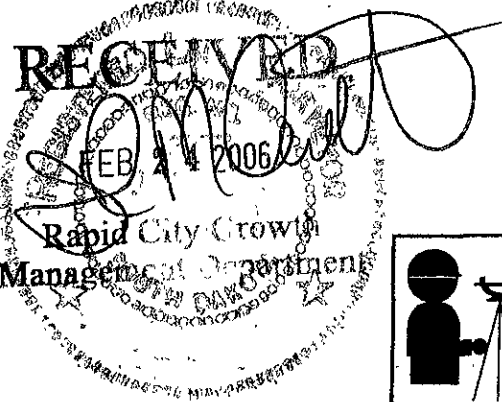
Book: 152
 Page: 2961
 12/02/2005 02:37p 24.00
 Pennington County, South Dakota
 Donna M. Mayer Misc Real Est




LINE	BEARING	DISTANCE
L1	S 89° 49' 00" E	68.14'
L2	S 36° 33' 39" E	34.24'
L3	N 36° 33' 39" W	75.00'
L4	N 53° 26' 21" E	21.40'

L=383.77'
 R=423.74'
 CLEN=370.78'
 BRG=N 62°30'23" W

L=313.04'
 R=347.74'
 CLEN=302.58'
 BRG=N 62°21'01" W



 <p>PREPARED BY: ARLETH & ASSOCIATES 25 KIRK ROAD DEADWOOD, SD 57732 605-578-1637</p>	<p>PREPARED FOR: DREAM DESIGN INTERNATIONAL, INC. 3202 WEST MAIN STREET, SUITE D RAPID CITY, SD 57702 605-348-0538</p>	<p>DATE: APRIL 1, 2005 SCALE: 1" = 100' DRAWN BY: SE/TV JOB NO: 6944</p>
---	--	---