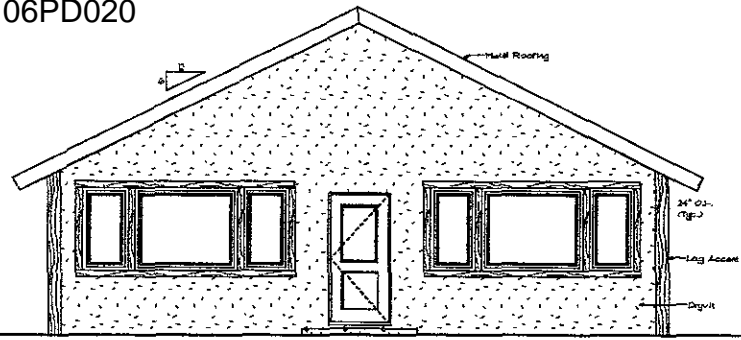


06PD020



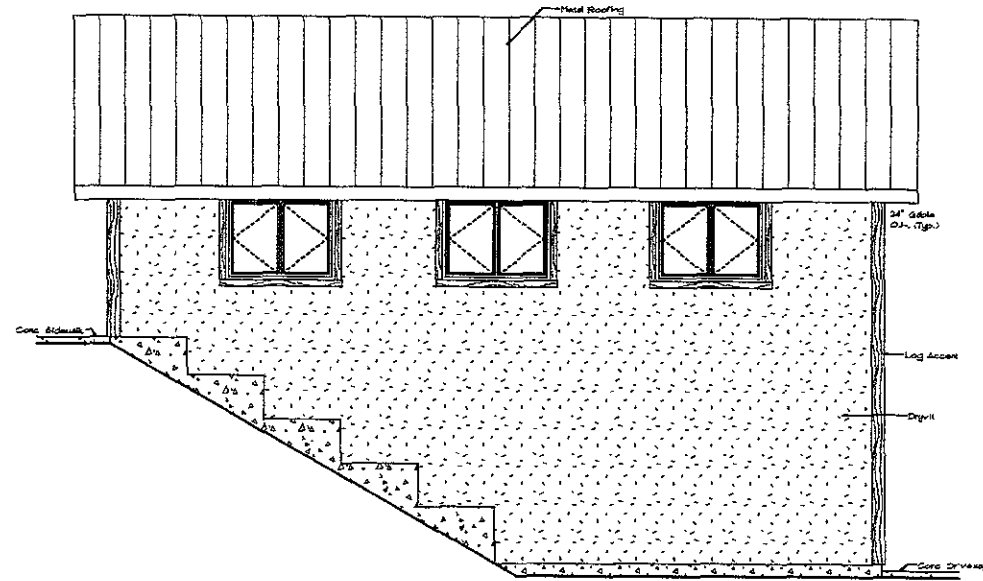
SOUTHWEST ELEVATION

Scale: 1/4" = 1'-0"

RECEIVED

APR 12 2006

Rapid City Growth
Management Department



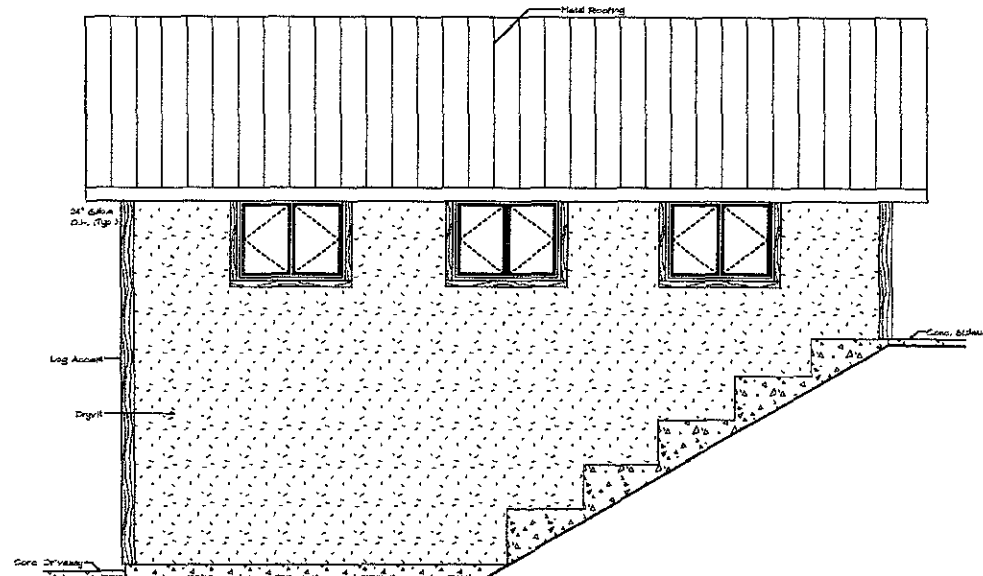
SOUTHEAST ELEVATION

Scale: 1/4" = 1'-0"



NORTHEAST ELEVATION

Scale: 1/4" = 1'-0"



NORTHWEST ELEVATION

Scale: 1/4" = 1'-0"