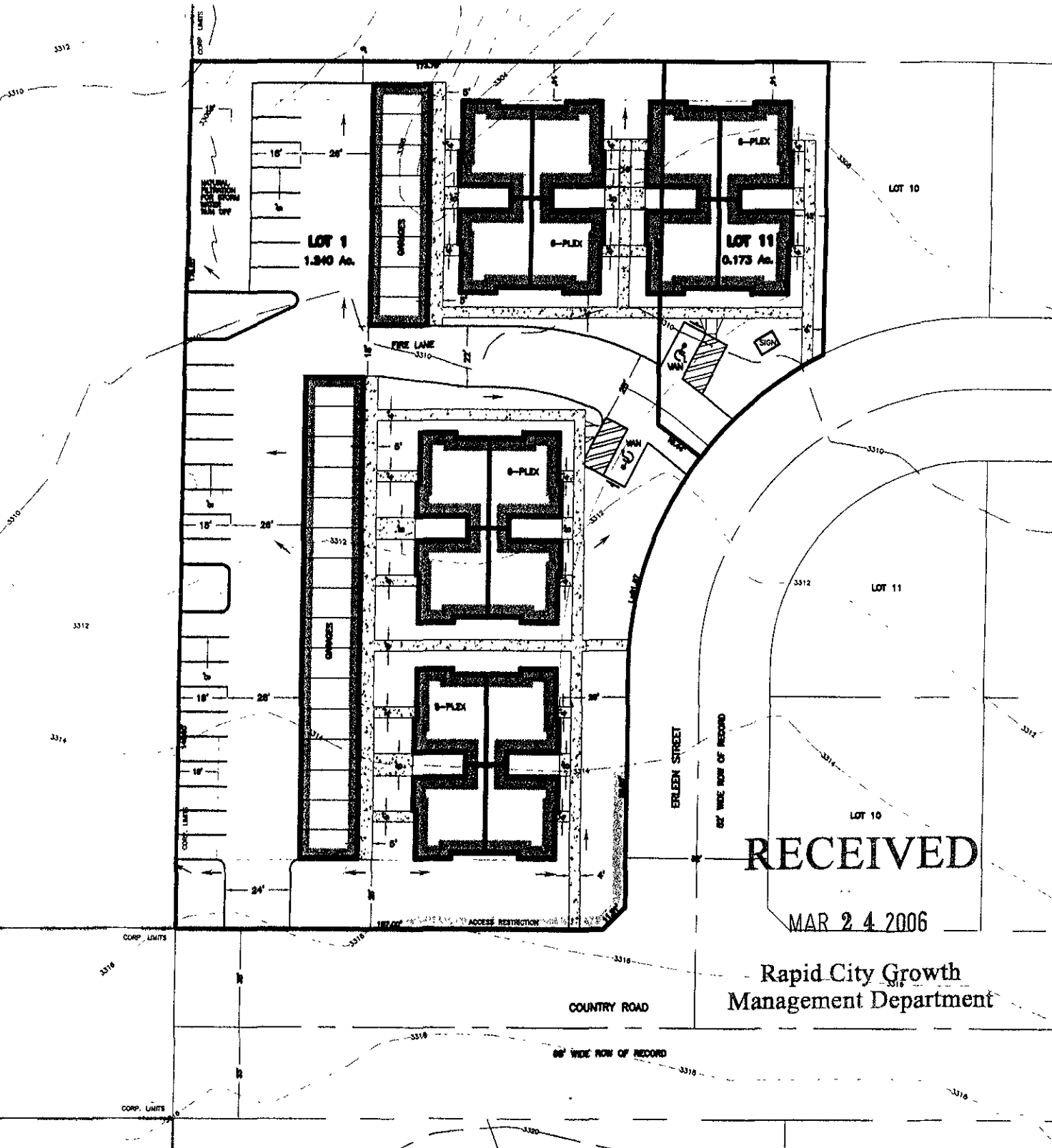


# THE BELLEVIEW CONDOS

LOT 1 & LOT 11, BLOCK 5 OF KATELAND SUBDIVISION  
LOCATED IN THE SE<sup>1</sup>/<sub>4</sub> OF THE SW<sup>1</sup>/<sub>4</sub>,  
SECTION 13, T2N, R7E, BHM,  
RAPID CITY, PENNINGTON COUNTY, SOUTH DAKOTA



**RECEIVED**  
MAR 24 2006

Rapid City Growth  
Management Department