

06SR020

PLAT OF LOT H1

Showing a tract of land to be acquired for highway purposes
in Tract A of Lot 5 of K-W Subdivision SECTION 28, T2N, R8E, BHM
Rapid City, Pennington County, South Dakota

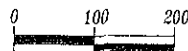
Scale 1" = 100'

Document prepared by
Fisk Land Surveying and
Consulting Engineers, Inc.
P.O. Box 8154
Rapid City, SD 57709
(605) 348-1538

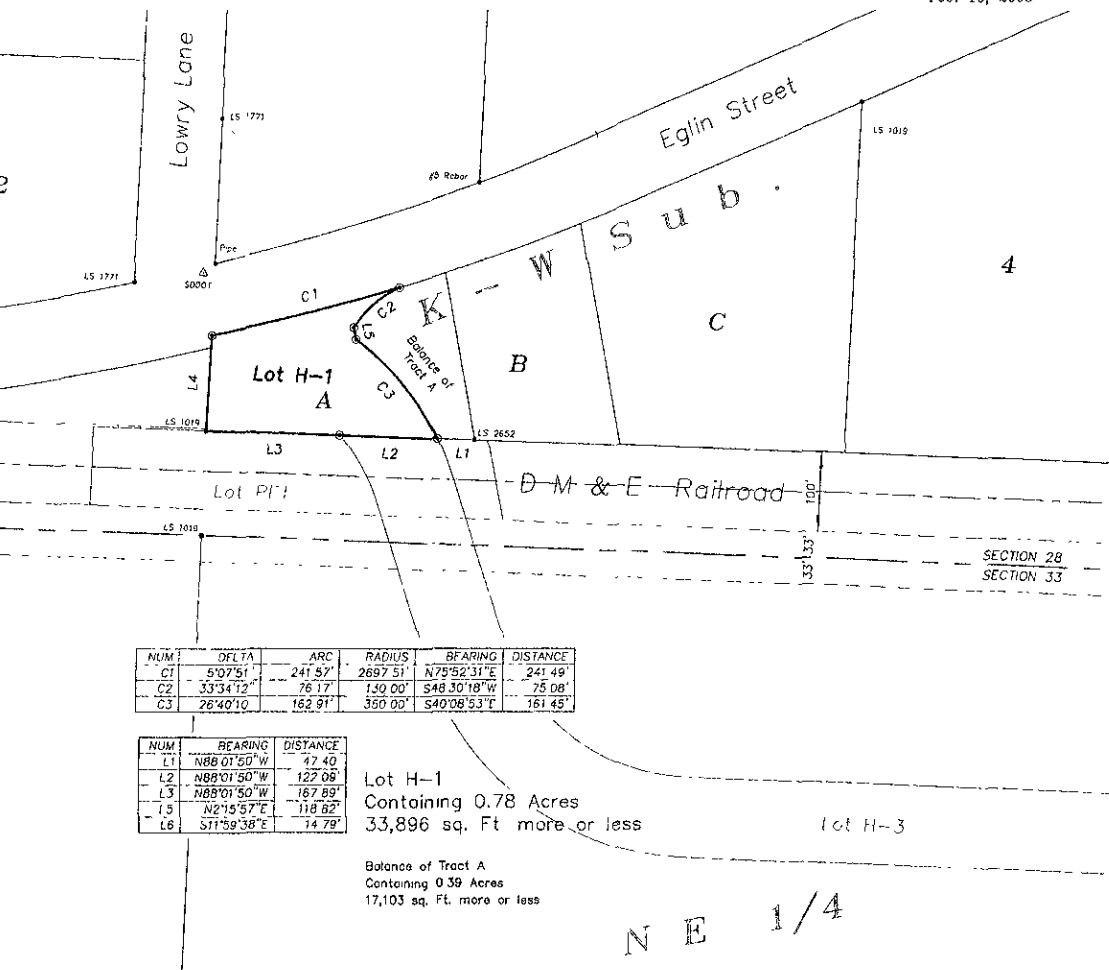
Legend

- = Found Monument as noted
- ▲ = Found Monument SDDOT Reb/cap
- ⊙ = Set Rebar/Cap LS 6865

Bearings and distances are
South Dakota State Plane
Coordinate System
South Zone NAD 83/86

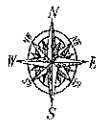


1" = 100'
Feb. 10, 2006

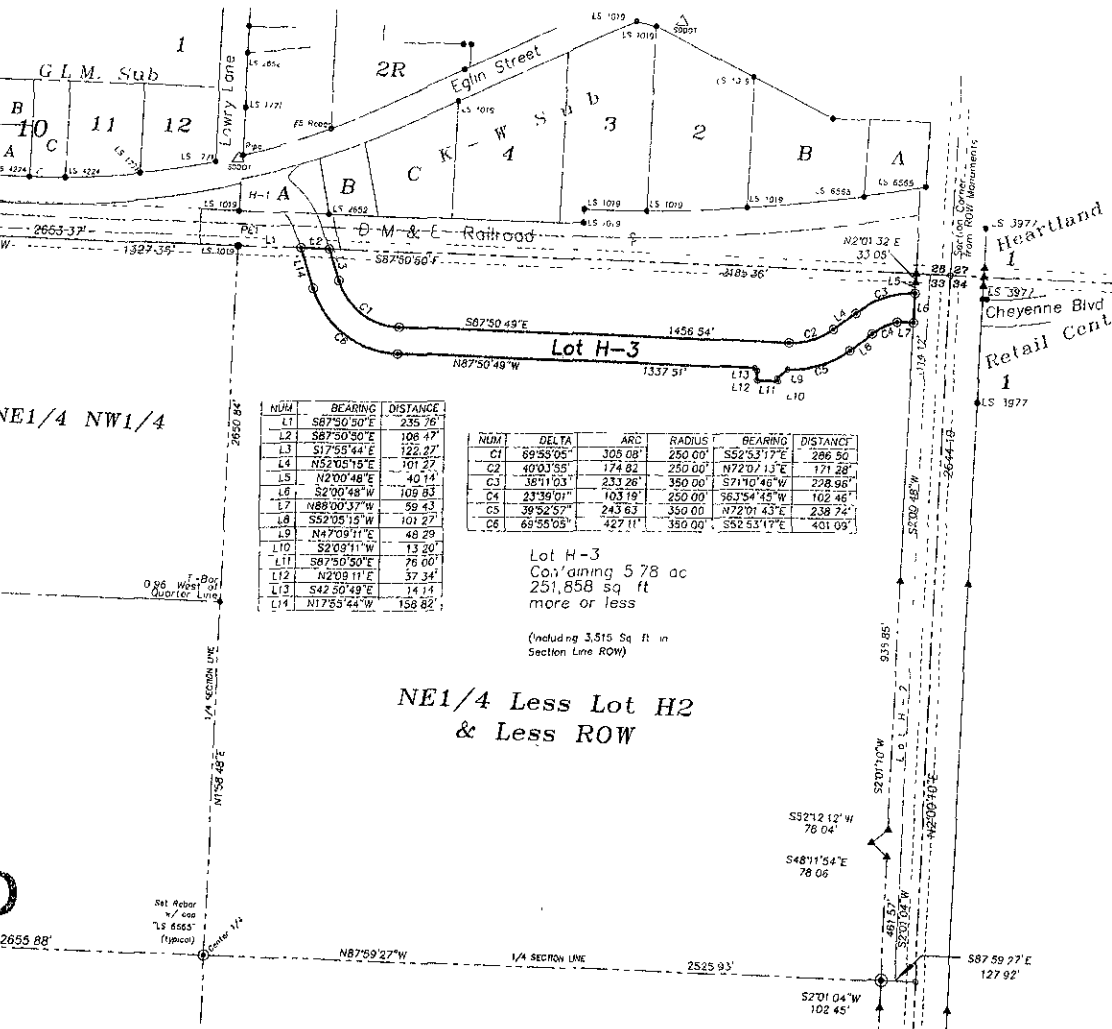


Scale 1" = 300'

Bearings and distances are
 South Dakota State Plane
 Coordinate System
 South Zone NAD 83/95



1" = 300'
Feb. 10, 2006
Rev, Feb. 23, 2006



PLAT OF LOT PE1

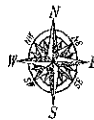
Showing a permanent easement to be acquired for highway purposes
in Railroad Land in the SW 1/4 SE 1/4 SECTION 28, 12th R8E, B4M
Rapid City, Pennington County, South Dakota
Scale 1" = 100'

Document prepared by
Risk Land Surveying and
Consulting Engineers Inc.
P O Box 8154
Rapid City, SD 57709
(605) 348- 538

Legend

- = Found Monument as noted
- ▲ = Found Monument SDOQT Reb/cap
- ⊗ = Set Rebar/Cap "LS 6565"

Bearings and distances are
South Dakota State Plane
Coordinate System
South Zone NAD 83/96


$$1'' = 100'$$

Feb. 10, 2006

Rev. Feb 23, 2006

