

# LOT 1 & 2 OF LOT K AND LOT 1 OF LOT J OF HARTER ADDITION; AND LOT B OF DONHISER ADDITION

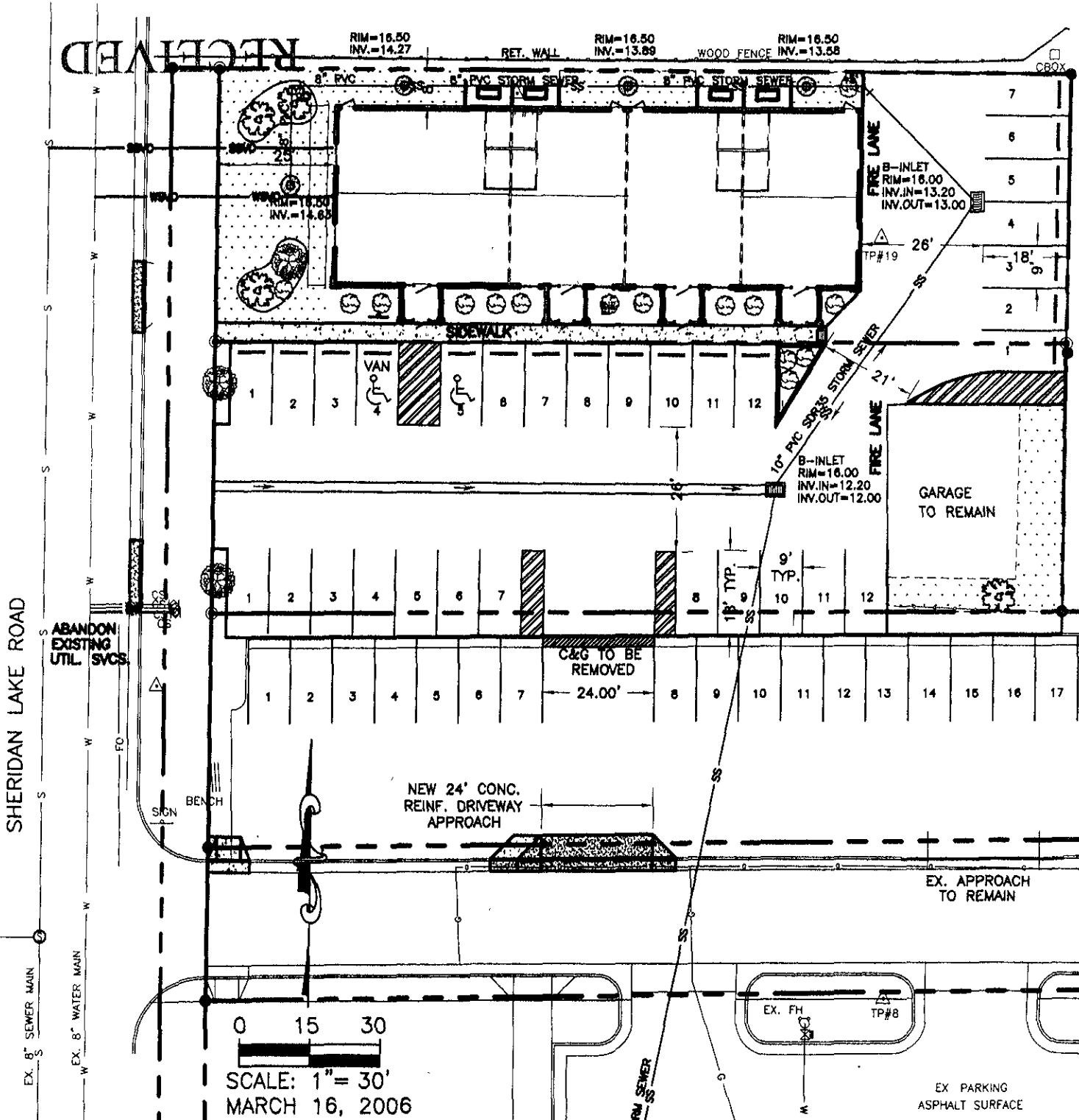
LOCATED IN THE NE 1/4 SECTION 3, T1N, R7E, B.H.M.,

RAPID CITY, PENNINGTON COUNTY, SOUTH DAKOTA

Rapid City Growth Management Department

~~MAR 15 2006~~

RECEIVED



SHERIDAN LAKE ROAD

0 15 30  
 SCALE: 1" = 30'  
 MARCH 16, 2006

EX PARKING ASPHALT SURFACE