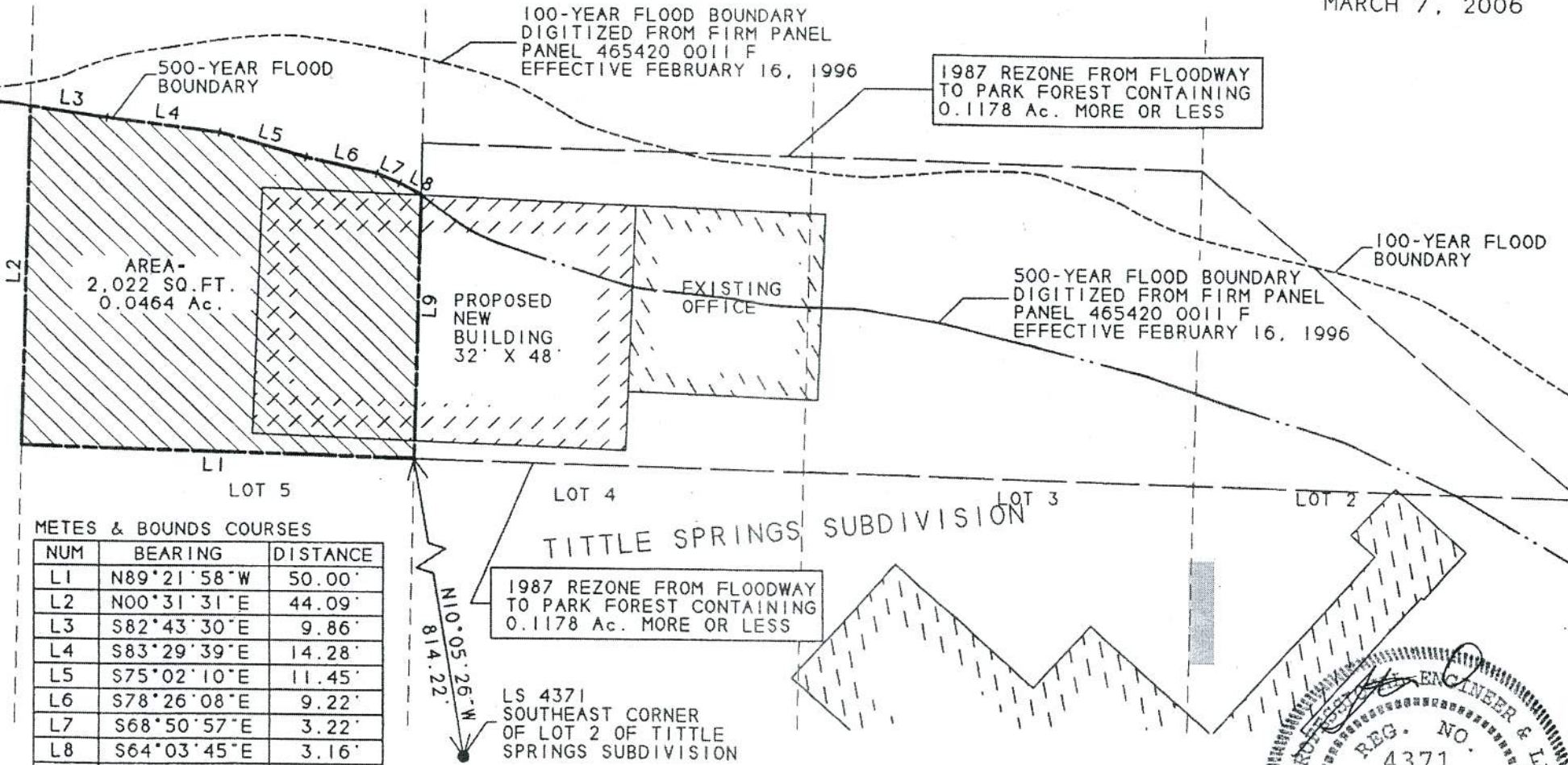


EXHIBIT OF REZONE
 FROM THE 500-YEAR FLOODPLAIN BOUNDARY TO PARK FOREST FOR
 A PORTION OF LOTS 2 - 6 OF TITTLE SPRINGS SUBD.
 LOCATED IN THE SW 1/4 AND SE 1/4 OF SECTION 18,
 T1N, R7E, BHM RAPID CITY, PENNINGTON COUNTY, SD



SCALE: 1" = 20'
 MARCH 7, 2006



METES & BOUNDS COURSES

NUM	BEARING	DISTANCE
L1	N89°21'58"W	50.00'
L2	N00°31'31"E	44.09'
L3	S82°43'30"E	9.86'
L4	S83°29'39"E	14.28'
L5	S75°02'10"E	11.45'
L6	S78°26'08"E	9.22'
L7	S68°50'57"E	3.22'
L8	S64°03'45"E	3.16'
L9	S00°31'31"W	34.43'

N10°05'26"W
 814.22'

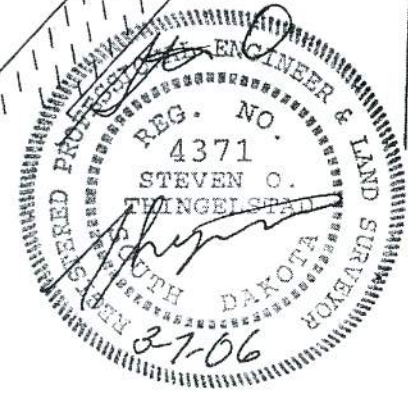
1987 REZONE FROM FLOODWAY
 TO PARK FOREST CONTAINING
 0.1178 Ac. MORE OR LESS

LS 4371
 SOUTHEAST CORNER
 OF LOT 2 OF TITTLE
 SPRINGS SUBDIVISION

LEGEND

- PROPERTY LINES
- - - - - LOT LINES
- 1987 REZONE BOUNDARY
- - - - - PROPOSED REZONE BOUNDARY
- - - - - 100 YEAR FLOODLINE
- - - - - 500 YEAR FLOODLINE

NOTE:
 THE 100-YEAR AND 500-YEAR FLOOD BOUNDARY LINES SHOWN HEREON ARE REPRODUCED BY DIGITIZING THESE LINES FROM THE EFFECTIVE F.I.R.M. PANEL 465420 0011 F AND OVERLAYING THEM ONTO THIS MAP. THESE LINES ARE REFERENCED TO ACTUAL FIELD SURVEYED PROPERTY MONUMENTS THAT ARE IDENTIFIABLE ON THE F.I.R.M. PANEL. BUILDING LOCATIONS AND PROPERTY LINES SHOWN HEREON ARE BASED ON ACTUAL FIELD SURVEYED POSITIONS.



SHEET 1 OF 2

PREPARED BY: STEVEN O. THINGELSTAD
 BRITTON ENGINEERING & LAND SURVEYING, INC.
 11750 NORTH HIGHWAY 79, BLACK HAWK, SD 57718
 TELEPHONE: (605) 718-3988