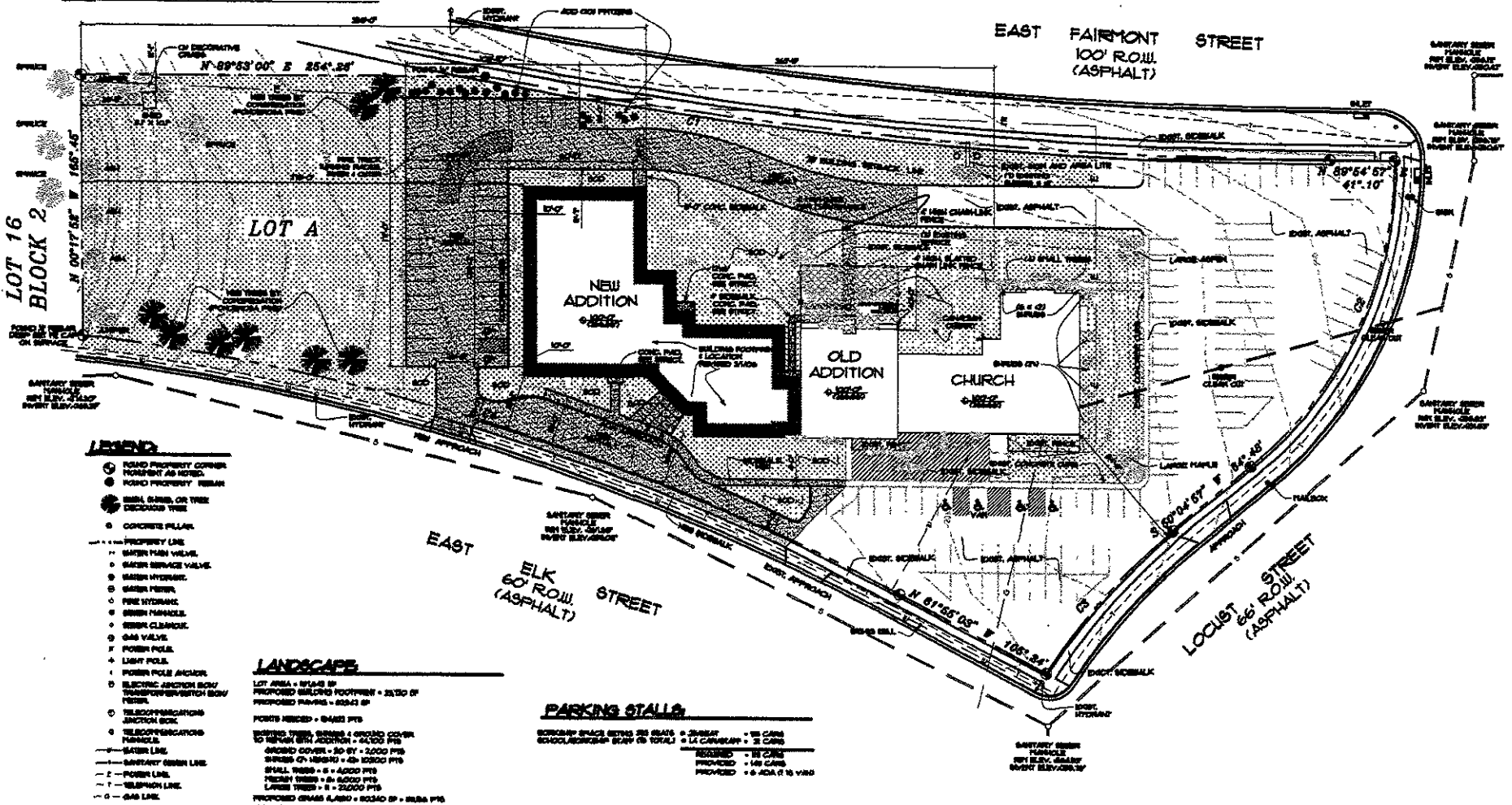


CURVE	DELTA ANGLE	RADIUS	ARC	TANGENT	CHORD	CHORD BEARING
CD101	107°37'	78.84'	331.24'	246.37'	336.07'	S 84°47'0" E
CD102	107°37'	78.84'	331.24'	246.37'	336.07'	S 84°47'0" E
CD103	174°27'	140.70'	121.37'	152.24'	123.94'	S 42°34'0" W
CD104	174°27'	140.70'	121.37'	152.24'	123.94'	N 17°31'0" W



- LEGEND**
- ROAD PROPERTY CORNER (PRESENT AS NOTED)
 - ROAD PROPERTY (REMAN)
 - BENCH MARK OR TREE (DISCONTINUED TREE)
 - CONCRETE PILLAR
 - PROPERTY LINE
 - WATER MAIN VALVE
 - WATER SERVICE VALVE
 - WATER HYDRANT
 - WATER TOWER
 - FINE HYDRANT
 - SEWER MANHOLE
 - SEWER CLEANOUT
 - GAS VALVE
 - POWER POLE
 - LIGHT POLE
 - POWER POLE ANCHOR
 - ELECTRIC ANCHOR BOX (INDICATED BY SYMBOL BELOW)
 - TELECOMMUNICATIONS ANCHOR BOX
 - TELECOMMUNICATIONS MANHOLE
 - WATER LINE
 - SANITARY SEWER LINE
 - F — POWER LINE
 - T — TELEPHONE LINE
 - G — GAS LINE

LANDSCAPE

LOT AREA = 18,414 SQ FT
 PROPOSED SEEDING FOOTPRINT = 26,250 SQ FT
 PROPOSED PAVING = 8,234 SQ FT

POINTS NEEDED = 8,442 PLS

SEEDING TYPES, MIXES & GRADING COVER TO MATCH EXIST. ADDITION = 41,500 PLS

GRASSING COVER = 30 SF = 2,000 PLS
 MIXED GRASS = 40 SF = 2,800 PLS
 SMALL TREES = 5 @ 4,000 PLS
 TREES 12" DBH = 2 @ 6,000 PLS
 LARGE TREES = 2 @ 25,000 PLS

PROPOSED GRASS PLANTING = 40,540 SF = 2,824 PLS
 NET POINTS NEEDED 32,446 PLS

ADD 20 PERCENTAGE FINE & 1,000 PLS SOAKED & TROWED BY COMBINATION
 ADD 200 BARRIS = 2 @ 3,000 PLS

PARKING STALLS

STANDARD SPACE 22'6" x 9'6" = 216 SQ FT
 20' x 9'6" = 192 SQ FT

REQUIRED = 212 STALLS
 PROVIDED = 148 CARS
 PROVIDED = 6 ADA R 16 VANS

LANDSCAPE PLAN
 SCALE: 1" = 30'



ST. PAUL'S LUTHERAN SCHOOL - 6TH ADDITION
 RAPID CITY, SOUTH DAKOTA

LANDSCAPE PLAN

DATE: 2/22/06
 DRAWN BY: JNL
 CHECKED BY: CD

PROJECT: ST. PAUL'S LUTHERAN SCHOOL - 6TH ADDITION
 ARCHITECT: HENNING & HENNING

LANDSCAPE ASSOCIATES, L.P.A.