

RECEIVED

1" = 8'

38'-10 $\frac{1}{4}$ "

14'-7"

LOTTERY  
Machines

Office/  
Storage/  
W.H./  
Ser. Pan.

10'

Bar area

RECEIVED

FEB 22 2006

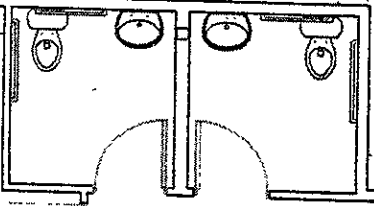
Rapid City Growth  
Management Department

LOTTERY  
Machines

Office/  
Storage/  
W.H./  
Ser. Pan.

12'-7"

11'-11 $\frac{1}{2}$ "



DARTS

DARTS

