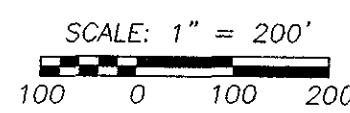
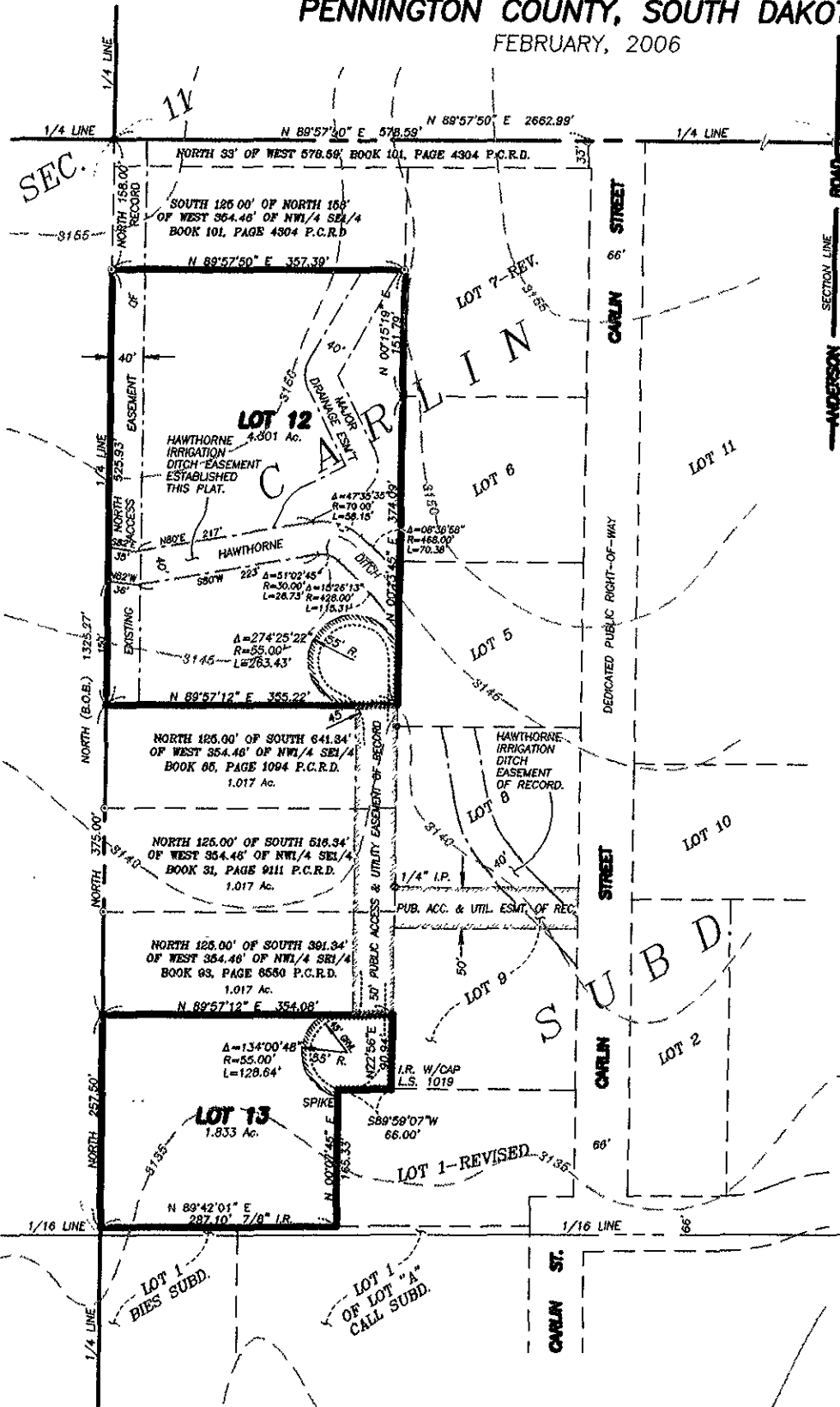


# LAYOUT PLAT

PROPOSED LOT 12 AND LOT 13 OF CARLIN SUBDIVISION  
LOCATED IN THE W1/2 NW1/4 SE1/4 OF SECTION 11,  
TOWNSHIP 1 NORTH, RANGE 8 EAST OF THE BLACK HILLS MERIDIAN,  
PENNINGTON COUNTY, SOUTH DAKOTA.

FEBRUARY, 2006



## RECEIVED

FEB 24 2006

Rapid City Growth  
Management Department

PREPARED BY:



**D.C. Scott**  
SURVEYORS, INC.  
3153 ANDERSON ROAD  
RAPID CITY, SD 57703  
(605) 393-2400