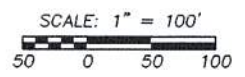

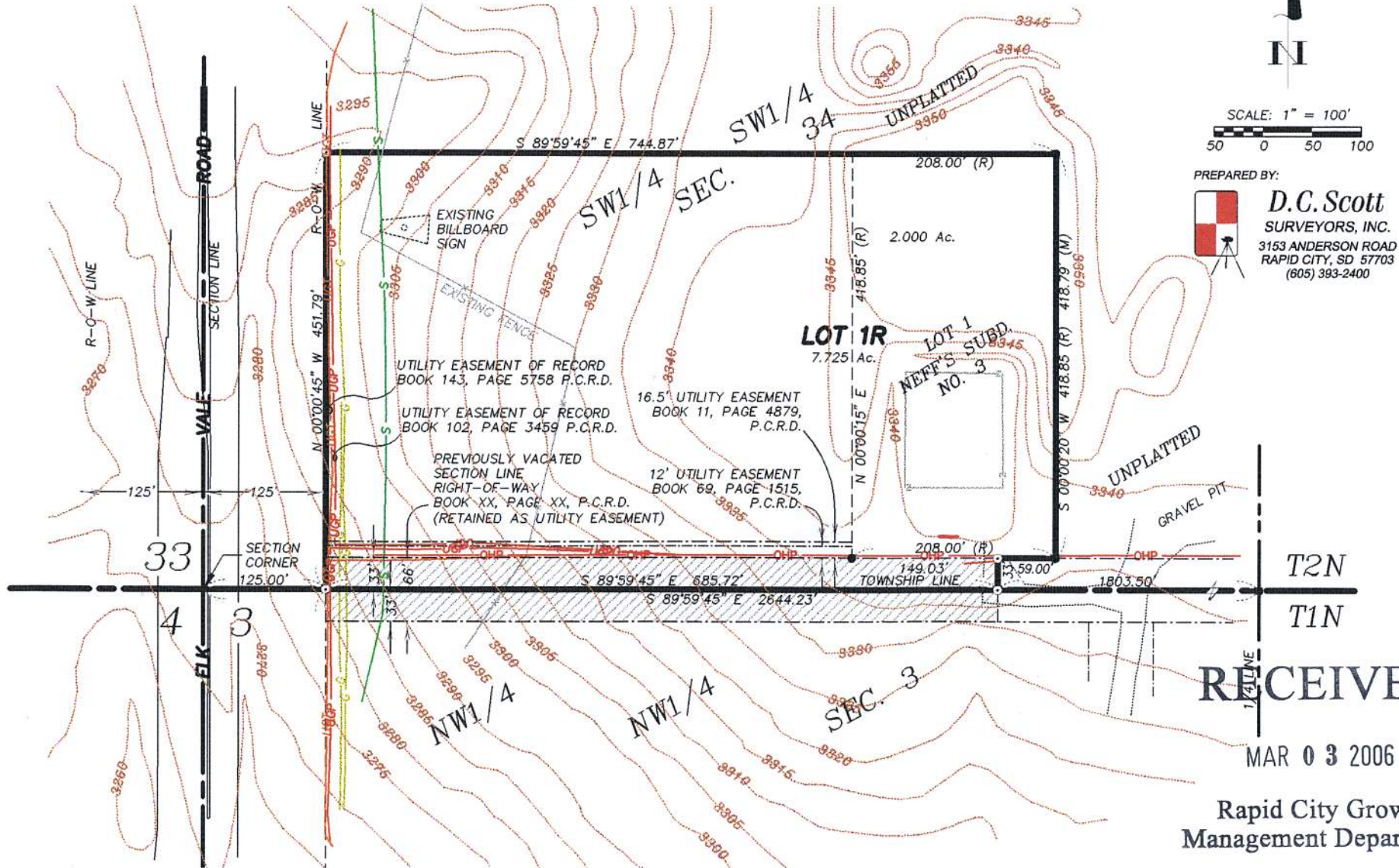


PRELIMINARY PLAT OF
LOT 1R OF NEFF'S SUBDIVISION NO. 3
(FORMERLY LOT 1 OF NEFF'S SUBDIVISION NO. 3 AND
UNPLATTED LAND IN THE SW1/4 SW1/4 OF SECTION 34),
LOCATED IN THE SW1/4 SW1/4 OF SECTION 34;
TOWNSHIP 2 NORTH, RANGE 8 EAST OF THE BLACK HILLS MERIDIAN,
RAPID CITY, PENNINGTON COUNTY, SOUTH DAKOTA.

FEBRUARY, 2006



PREPARED BY:

D.C. Scott
 SURVEYORS, INC.
 3153 ANDERSON ROAD
 RAPID CITY, SD 57703
 (605) 393-2400



RECEIVED

MAR 03 2006

Rapid City Growth
Management Department