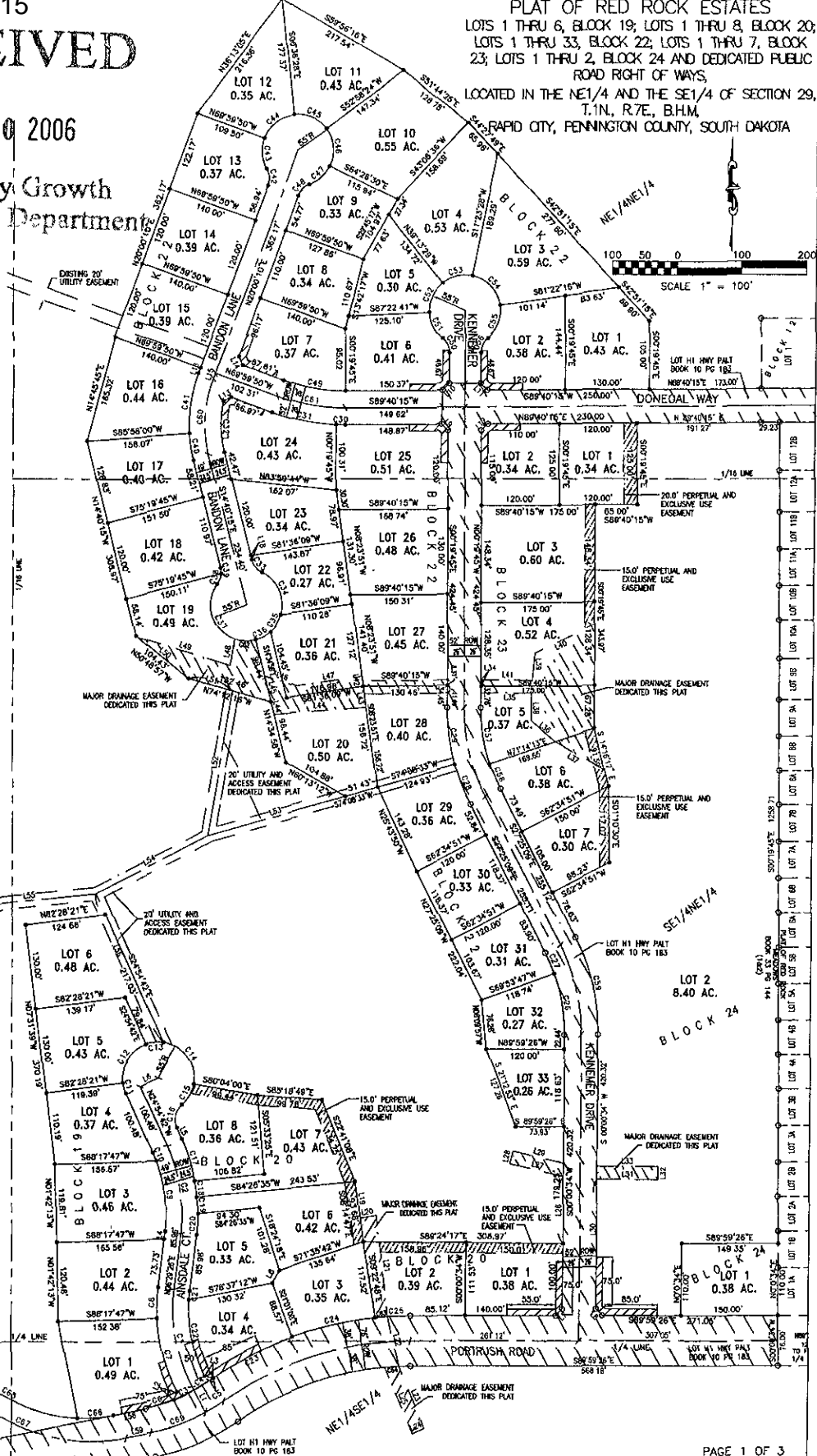


06SR015
RECEIVED

FEB 10 2006
Rapid City Growth
Management Department

PLAT OF RED ROCK ESTATES
LOTS 1 THRU 6, BLOCK 19; LOTS 1 THRU 8, BLOCK 20;
LOTS 1 THRU 33, BLOCK 22; LOTS 1 THRU 7, BLOCK
23; LOTS 1 THRU 2, BLOCK 24 AND DEDICATED PUBLIC
ROAD RIGHT OF WAYS,
LOCATED IN THE NE1/4 AND THE SE1/4 OF SECTION 29,
T.1N., R.7E., B.H.M.,
RAPID CITY, PENNINGTON COUNTY, SOUTH DAKOTA



REVISED OCTOBER 21, 2005
REVISED OCTOBER 26, 2005
REVISED JANUARY 19, 2006
REVISED FEBRUARY 01, 2006