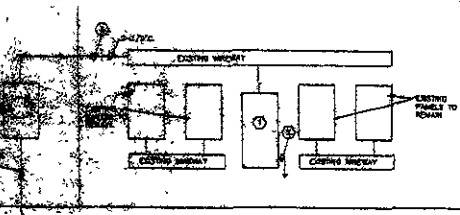
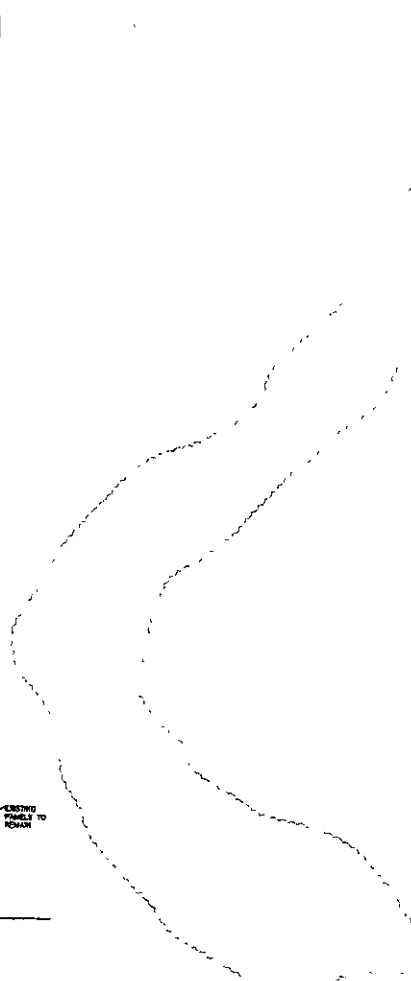


RECEIVED

FEB - 9 1976

Rapid City Growth
Management Department

06SR011

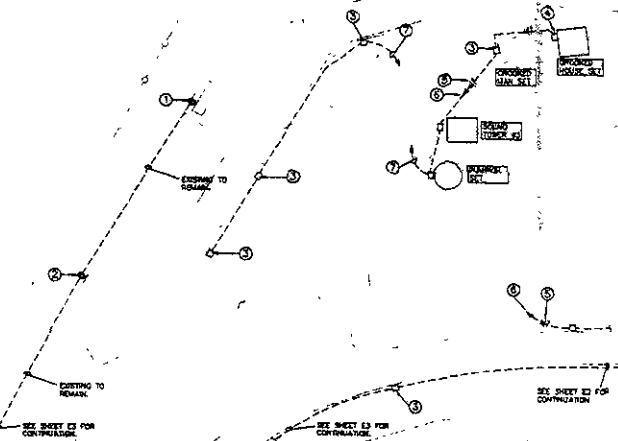


ONE-LINE DIAGRAM

- ① EXISTING SERVICE DISCONNECT PROVIDE A NEW PANEL. SEE THE SCHEDULE, THIS SHEET
- ② GROUND TO ENCLAVE STEEL THE WATER SERVICE, AND A DRIVEN GROUND ROD
- ③ NEW FEEDER (2) #800 MCM
- ④ NEW 250 AMP THREE PHASE METER SOCKET TO BE INSTALLED

ELECTRICAL SITE PLAN - QUADRANT 1
SCALE: 1" = 30'-0"

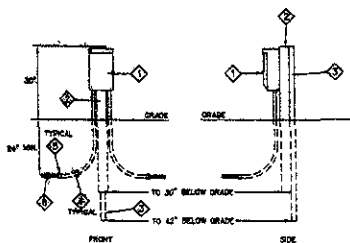
- PLAN NOTES:
- ① EXISTING WP, GFI RECEPTACLE TO REMAIN
 - ② PROVIDE A NEW WP, GFI RECEPTACLE IN THE EXISTING BOX. CONNECT TO THE EXISTING CIRCUIT
 - ③ PROVIDE A NEW POWER OUTLET MOUNTED TO POLE. SEE THE DETAIL, THIS SHEET
 - ④ PROVIDE A NEW POWER OUTLET MOUNTED TO THE STRUCTURE.
 - ⑤ (3) #4, #8 GND, TYPE 'USE' ALUMINUM.
 - ⑥ TO NEW 50/2 IN THE SOUND TOWER PANEL.
 - ⑦ (2) #8 TYPE 'USE', #10 GND TO A NEW 20/1 IN SOUND TOWER PANEL.



SEE SHEET E2 FOR CONTINUATION

SEE SHEET E3 FOR CONTINUATION

SEE SHEET E4 FOR CONTINUATION



SURFACE/POLE MOUNTED POWER OUTLET

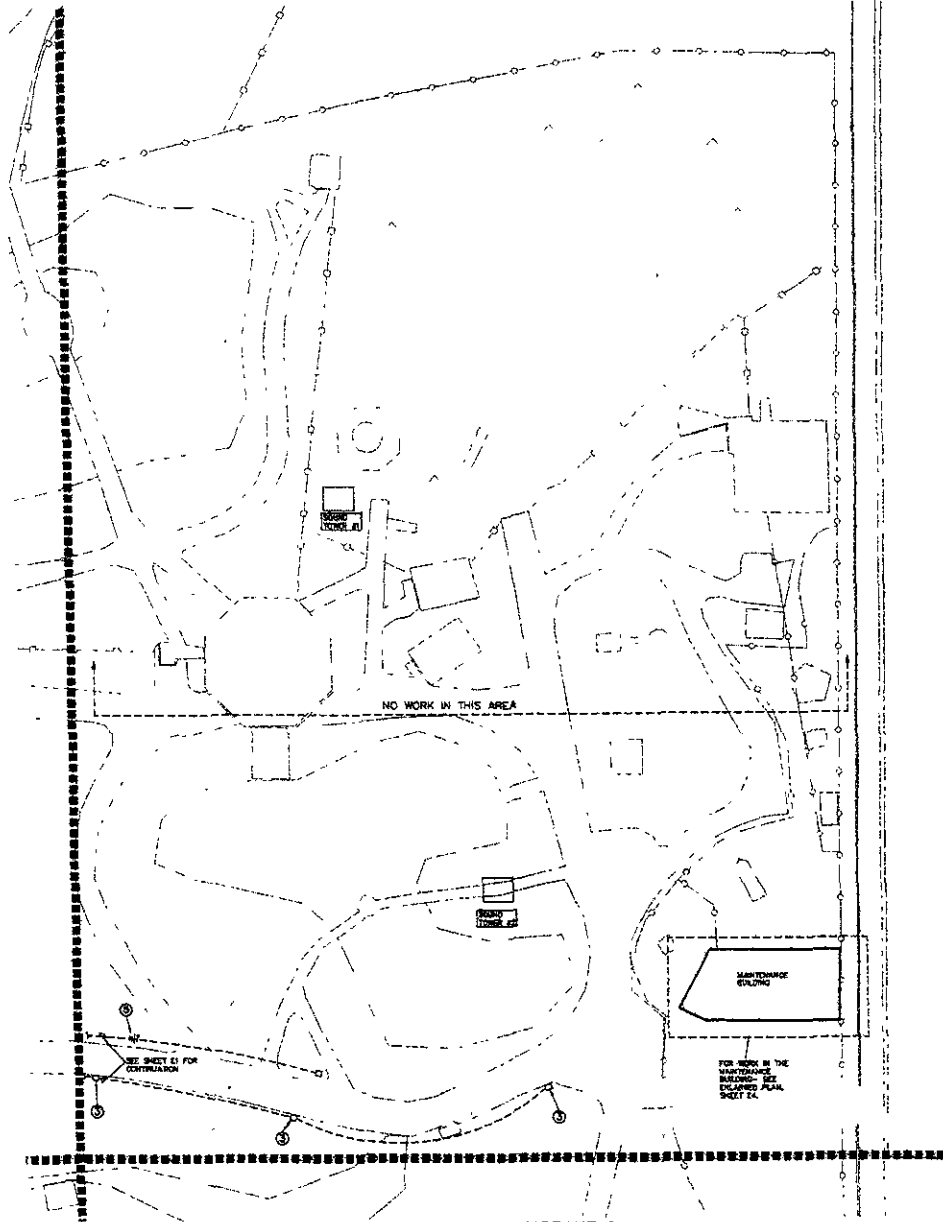
SCALE: 1/2" = 1'-0"

SURFACE/POLE MOUNTED POWER OUTLET NOTES:
 SURFACE MOUNTED POWER OUTLET, TYPE AS SHOWN ON THE PLAN.

- ◆ 4"x4"x60" TREATED POST.
- ◆ 6"(MIN) DRIVEN FENCE POST
- ◆ 1-1/4" PVC WITH FACTORY SWEEP
- ◆ 1-1/4" BUSHED CONNECTOR
- ◆ DIRECT BURIAL CONDUCTORS. SEE THE PLANS FOR THE DETAILS.

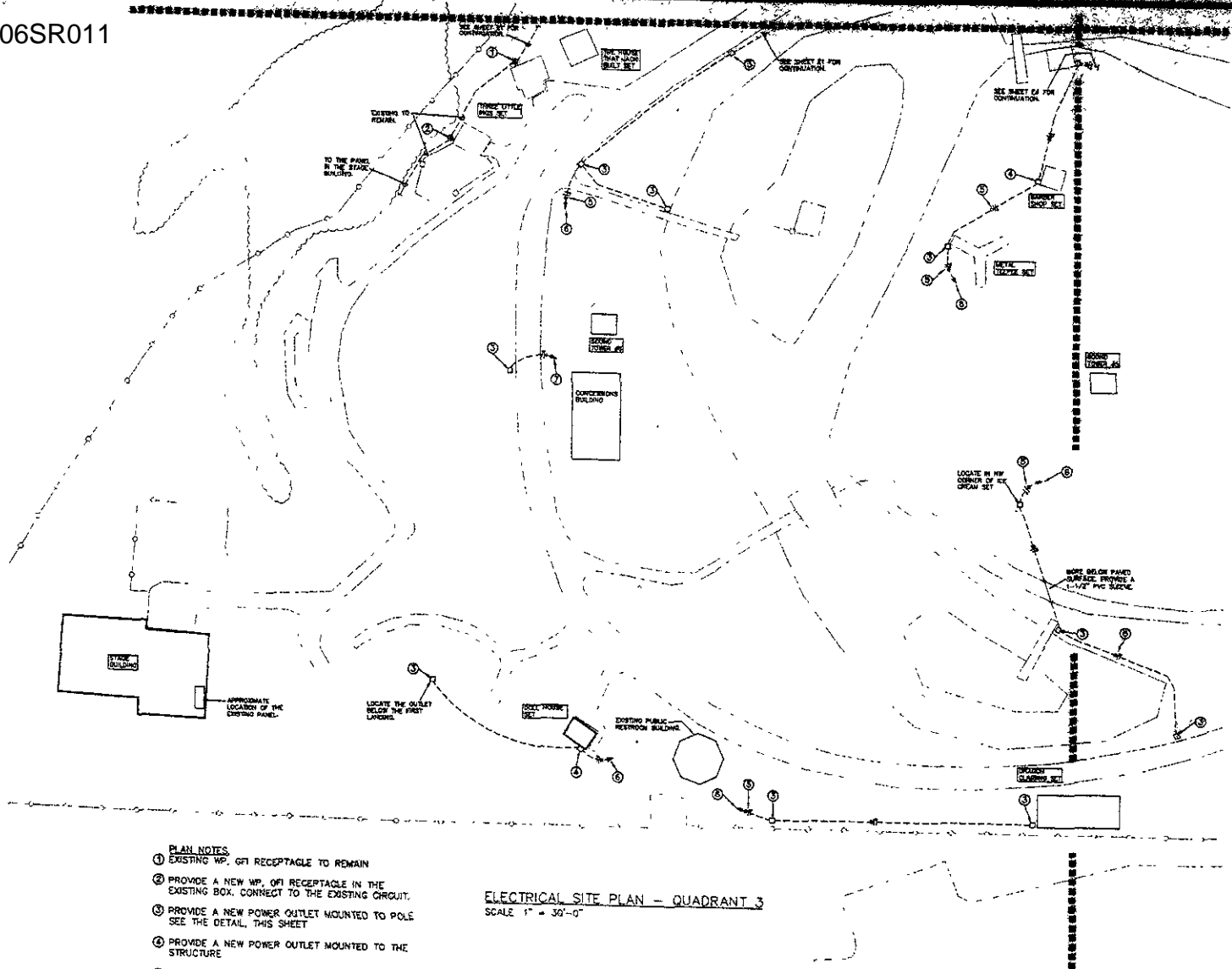
PLAN NOTES

- ① EXISTING WP, GFI RECEPTACLE TO REMAIN
- ② PROVIDE A NEW WP, GFI RECEPTACLE IN THE EXISTING BOX. CONNECT TO THE EXISTING CIRCUIT
- ③ PROVIDE A NEW POWER OUTLET MOUNTED TO POLE SEE THE DETAIL THIS SHEET.
- ④ PROVIDE A NEW POWER OUTLET MOUNTED TO THE STRUCTURE
- ⑤ (3) #4, #8 GND, TYPE 'USE' ALUMINUM
- ⑥ TO NEW 50/2 IN THE SOUND TOWER PANEL.
- ⑦ (2) #8 TYPE 'USE', #10 GND TO A NEW 20/1 IN SOUND TOWER PANEL.



ELECTRICAL SITE PLAN - QUADRANT 2

SCALE: 1" = 30'-0"

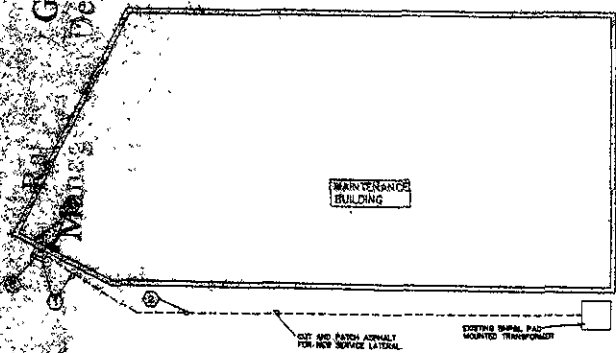


PLAN NOTES

- ① EXISTING WP. GFI RECEPTACLE TO REMAIN
- ② PROVIDE A NEW WP. GFI RECEPTACLE IN THE EXISTING BOX. CONNECT TO THE EXISTING CIRCUIT.
- ③ PROVIDE A NEW POWER OUTLET MOUNTED TO POLE. SEE THE DETAIL, THIS SHEET
- ④ PROVIDE A NEW POWER OUTLET MOUNTED TO THE STRUCTURE
- ⑤ (3) #4, #8 GND. TYPE 'USE' ALUMINUM
- ⑥ TO NEW 50/2 IN THE SOUND TOWER PANEL.
- ⑦ (2) #8 TYPE 'USE' #10 GND TO A NEW 20/1 IN SOUND TOWER PANEL.

ELECTRICAL SITE PLAN - QUADRANT 3

SCALE 1" = 30'-0"



MAINTENANCE BUILDING PLAN

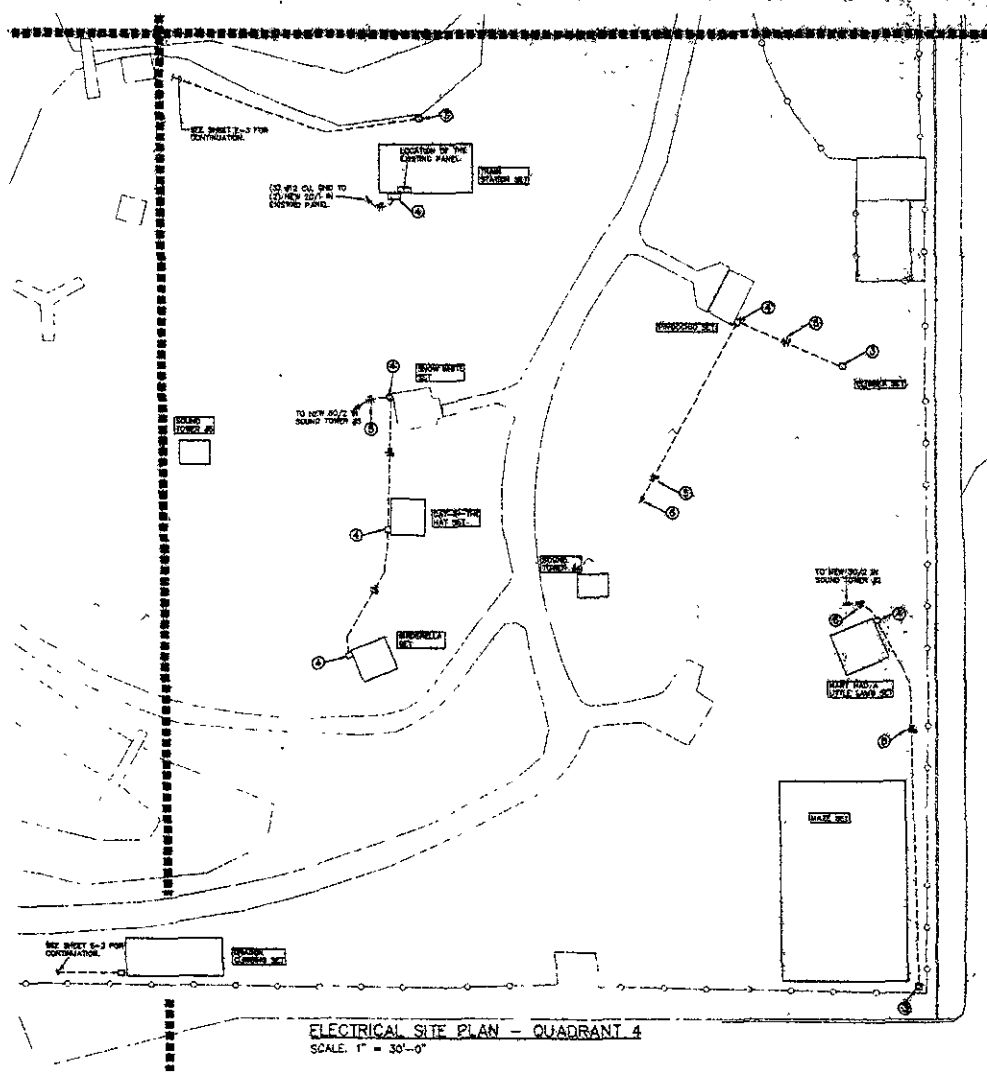
SCALE: 1/8" = 1'-0"

MAINTENANCE BUILDING PLAN NOTES:

- ① REMOVE THE EXISTING SERVICE LATERAL AND EXISTING 200 AMP, 1 PHASE METER SOCKET
- ② NEW SERVICE LATERAL SEE THE ONE-LINE DIAGRAM.
- ③ NEW 1 PHASE METER SOCKET SEE THE ONE-LINE DIAGRAM.
- ④ REMOVE THE EXISTING 200 AMP MAIN FUSIBLE SWITCH. PROVIDE A NEW PANEL SEE THE ONE-LINE DIAGRAM.

PLAN NOTES:

- ① EXISTING WP, GFI RECEPTACLE TO REMAIN
- ② PROVIDE A NEW WP, GFI RECEPTACLE IN THE EXISTING BOX, CONNECT TO THE EXISTING CIRCUIT
- ③ PROVIDE A NEW POWER OUTLET MOUNTED TO POLE. SEE THE DETAIL, THIS SHEET.
- ④ PROVIDE A NEW POWER OUTLET MOUNTED TO THE STRUCTURE.
- ⑤ (3) #4, #8 GND, TYPE 'USE' ALUMINUM.
- ⑥ TO NEW 50/2 IN THE SOUND TOWER PANEL.
- ⑦ (2) #8 TYPE 'USE', #10 GND TO A NEW 20/1 IN SOUND TOWER PANEL.



ELECTRICAL SITE PLAN - QUADRANT 4

SCALE: 1" = 30'-0"