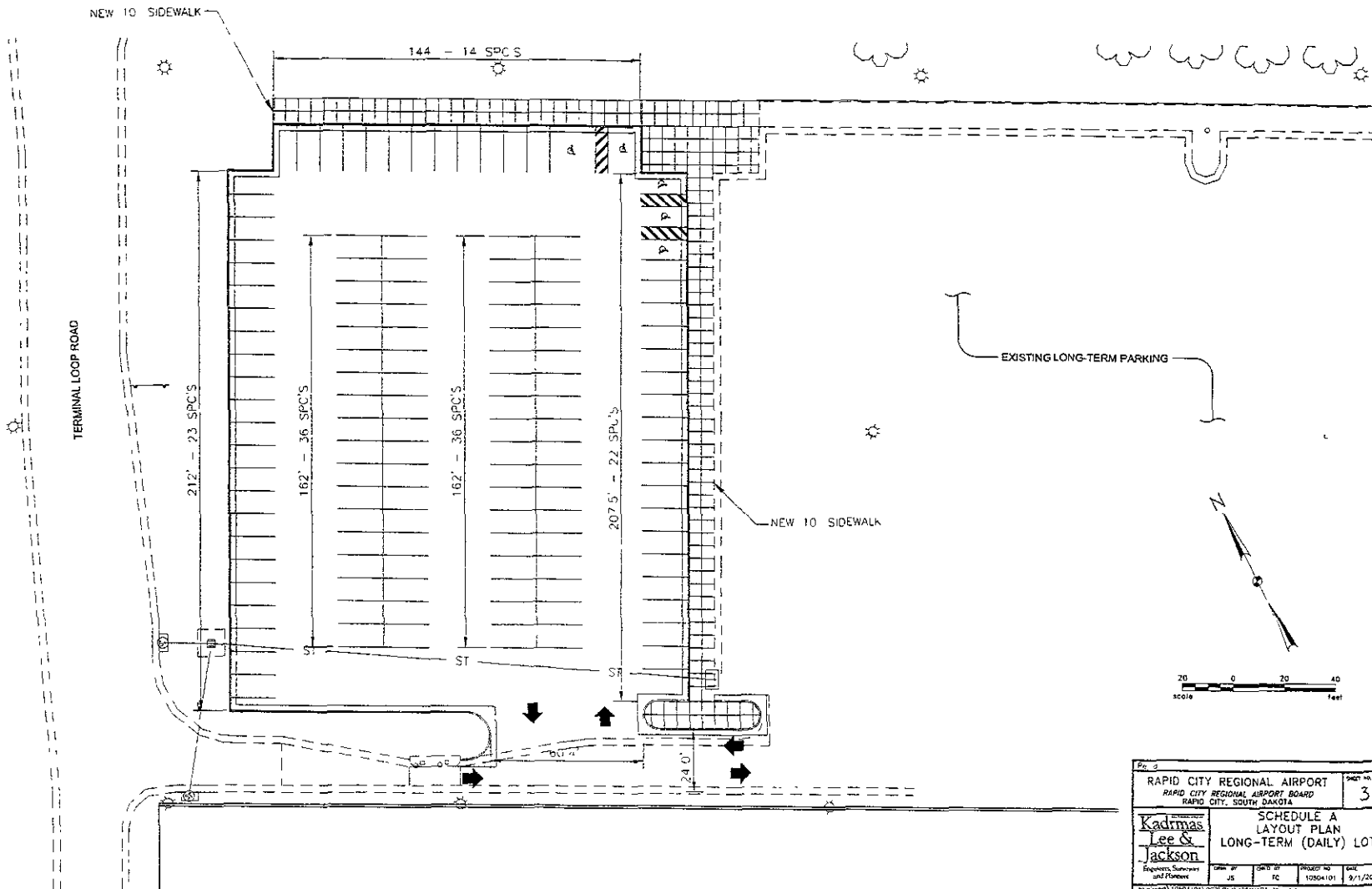
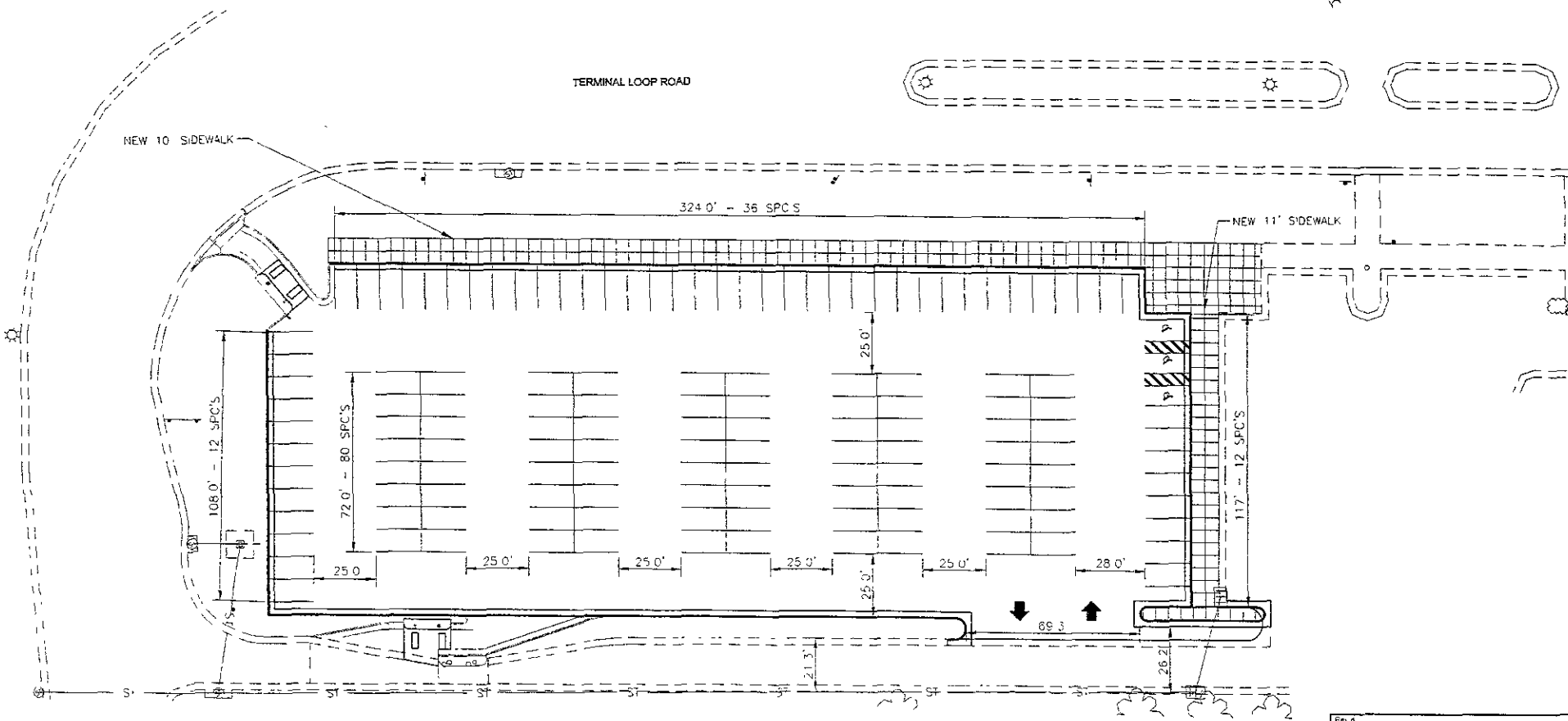
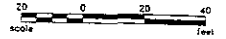


- 126 - PARKING SPACES
- 5 - ACCESSIBLE PARKING SPACES  
(1 VAN ACCESSIBLE)
- 131 - TOTAL SPACES



RAPID CITY REGIONAL AIRPORT RAPID CITY REGIONAL AIRPORT BOARD RAPID CITY, SOUTH DAKOTA		SHEET NO. <b>3</b>
SCHEDULE A LAYOUT PLAN LONG-TERM (DAILY) LOT		
ENGINEER <b>Kadmas                  Lee &amp;                  Jackson</b>	DATE OF JS	PROJECT NO. 12804101
REQUEST, SURVEY AND FLOWERS	DATE OF FC	SCALE 9/1/2004

137 - PARKING SPACES  
 3 - ACCESSIBLE PARKING SPACES  
 140 - TOTAL SPACES



Rev. 0		SHEET NO	
RAPID CITY REGIONAL AIRPORT		4	
RAPID CITY REGIONAL AIRPORT BOARD RAPID CITY, SOUTH DAKOTA			
Kadins Lee & Jackson	SCHEDULE B LAYOUT PLAN		
	SHORT-TERM (HOURLY) LOT		
Engineers, Surveyors and Planners	DATE	PROJECT NO.	DATE
	25	10504101	3/1/2004
C:\Users\10504101\Public\204\10504101_Revise.dwg			