

RECEIVED

JAN 24 2006

Rapid City Growth  
Management Department



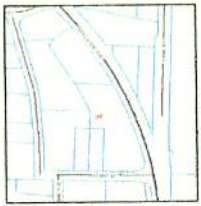
- LEGEND**
- 33541 33542 33543 33544
  - SPOT ELEVATION
  - RAVINE
  - TRE
  - WATER WHEEL
  - CURB STRIP
  - CLEAREMNT
  - WALKWAY
  - ONE
  - TELEPHONE POLE
  - PROPERTY LINE
  - SHADING LINE
  - URB & SLUTY
  - WATER LINE
  - POWER LINE
  - TELEPHONE LINE
  - TRANSFORMER
  - GAS LINE
  - MESH CONTAIN (1)
  - WALK CONTAIN (1)

Utility Easements 10' wide on the interior side of all side and rear lot lines.

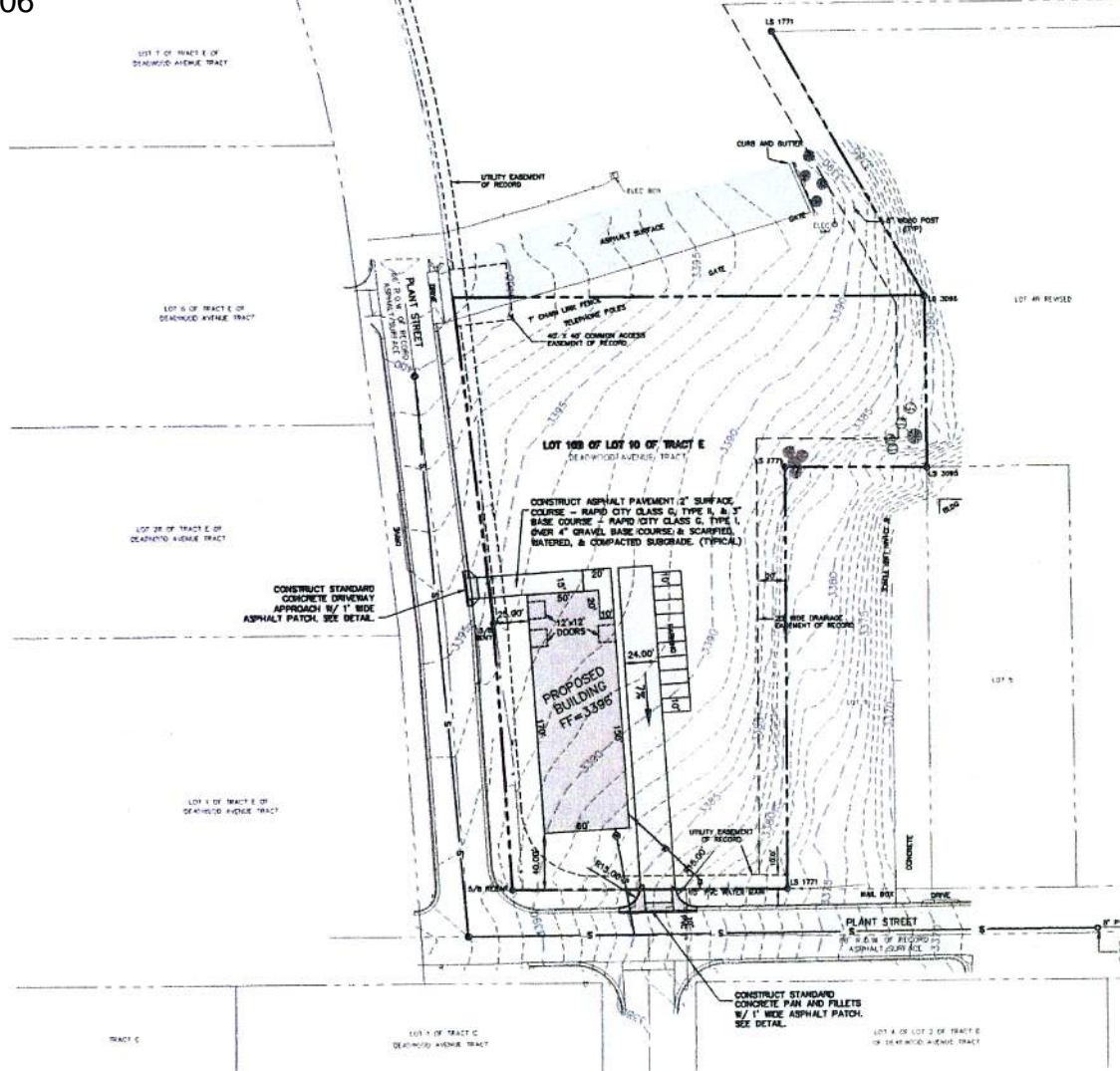
**NOTICES**  
SOUTH DAKOTA FIRE CALL NOTIFICATION CENTER  
115 EMBUREN HEIGHTS DRIVE  
PITTSBURGH, PA 15229  
1-800-781-1474

The locations of existing underground utilities are written in an approximate way only and based on those independently verified by the owner or its representative. The contractor shall determine the exact location of any existing utilities before commencing work, and agree to be fully responsible for any and all damages which might be occasioned by the contractor's failure to locate, locate and protect any and all underground utilities.

- NOTE:**
- 1 CONTRACTOR PROVIDE APPROVED TRAFFIC CONTROL PLAN AS NEEDED.
  - 2 ALL CONSTRUCTION SHALL BE IN ACCORDANCE WITH CITY OF RAPID CITY STANDARD SPECIFICATIONS FOR PUBLIC WORKS CONSTRUCTION.



MEAN HIGHS ELEVATIONS ARE BASED ON THE CITY OF RAPID CITY BENCH MARK 212 WITH A PUBLISHED ELEVATION OF 3364.04' (70+29.2)



PREPARED FOR  
ATTN: BOB HEIBULT  
GUSTAFSON BUILDERS  
P.O. BOX 1376  
RAPID CITY, SD 57709

LOCATION: LOT 10B OF LOT 10 OF TRACT E, DEADWOOD AVENUE TRACT NE 1/4 NW 1/4 OF SECTION 34, T2N, R7E, B1M RAPID QTY, PENNINGTON COUNTY, SOUTH DAKOTA



**Renner Engineering Company**  
616 54th St. • Rapid City, SD 57701 • 605/721-7310  
FAX: 605/721-7315 • E-MAIL: Gary@renner-engineering.com  
Spearfish Office: 605/777-0018

REVISIONS	
DATE	REVISION

PROJECT: SITE PLAN  
PRAIRIE WAVE COMMUNITIES  
RAPID CITY, PENNINGTON COUNTY, SOUTH DAKOTA

DESIGNER: T.A. & D.L.  
SURVEY DATE: 11-16-05  
CHECKED BY: FARM/ASP  
DRAWN: GDB  
APPROVED: GDB  
JOB NO.: 2145.04

SHEET
4
OF
7