

RECEIVED

FEB 10 2006

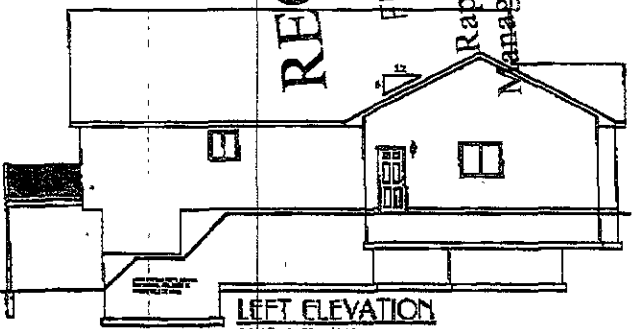
Rapid City Growth Management Department

WINDOWS ABOVE YES!

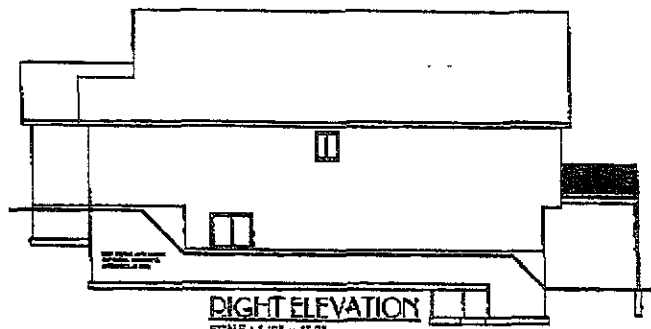
Rank 5/16



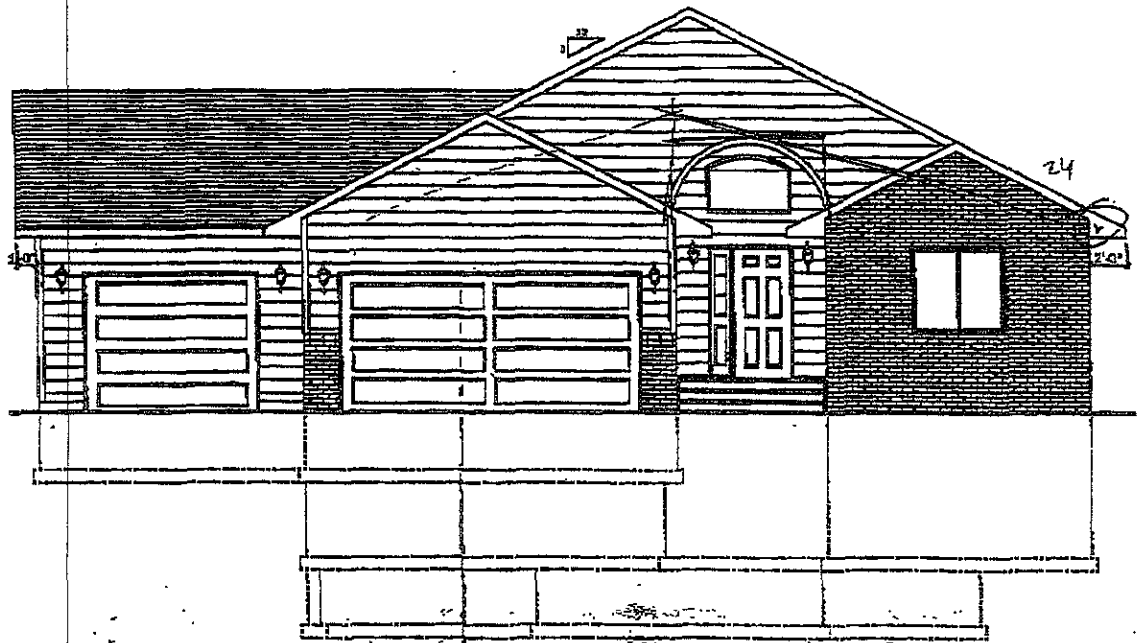
REAR ELEVATION
SCALE: 1/8" = 1'-0"



LEFT ELEVATION
SCALE: 1/8" = 1'-0"



RIGHT ELEVATION
SCALE: 1/8" = 1'-0"



FRONT ELEVATION
SCALE: 1/4" = 1'-0"

Vertical dimension lines on the left side of the front elevation with labels: TOP OF FLOOR, 3'-0", TOP OF FLOOR, 4'-0", TOP OF FLOOR, 5'-0", TOP OF FLOOR, 6'-0".

Vertical dimension lines on the right side of the front elevation with labels: TOP OF PLATE, 2'-0", TOP OF PLATE, 2'-0", MARK LEVEL, 2'-0", TOP OF FLOOR, 8'-0", TOP OF FLOOR, 8'-0", TOP OF FLOOR, 2'-0".

Handwritten notes and a circled number: 24, 700, 3-4

Customer Signature

These drawings were prepared by the undersigned for the purpose of showing the general character of the proposed project. They do not constitute a contract and are subject to change without notice.

IMPORTANT

United Building Centers

Drawn: REGENSHAW, KIMBERLY
Contractor: STOTT, MORTI



