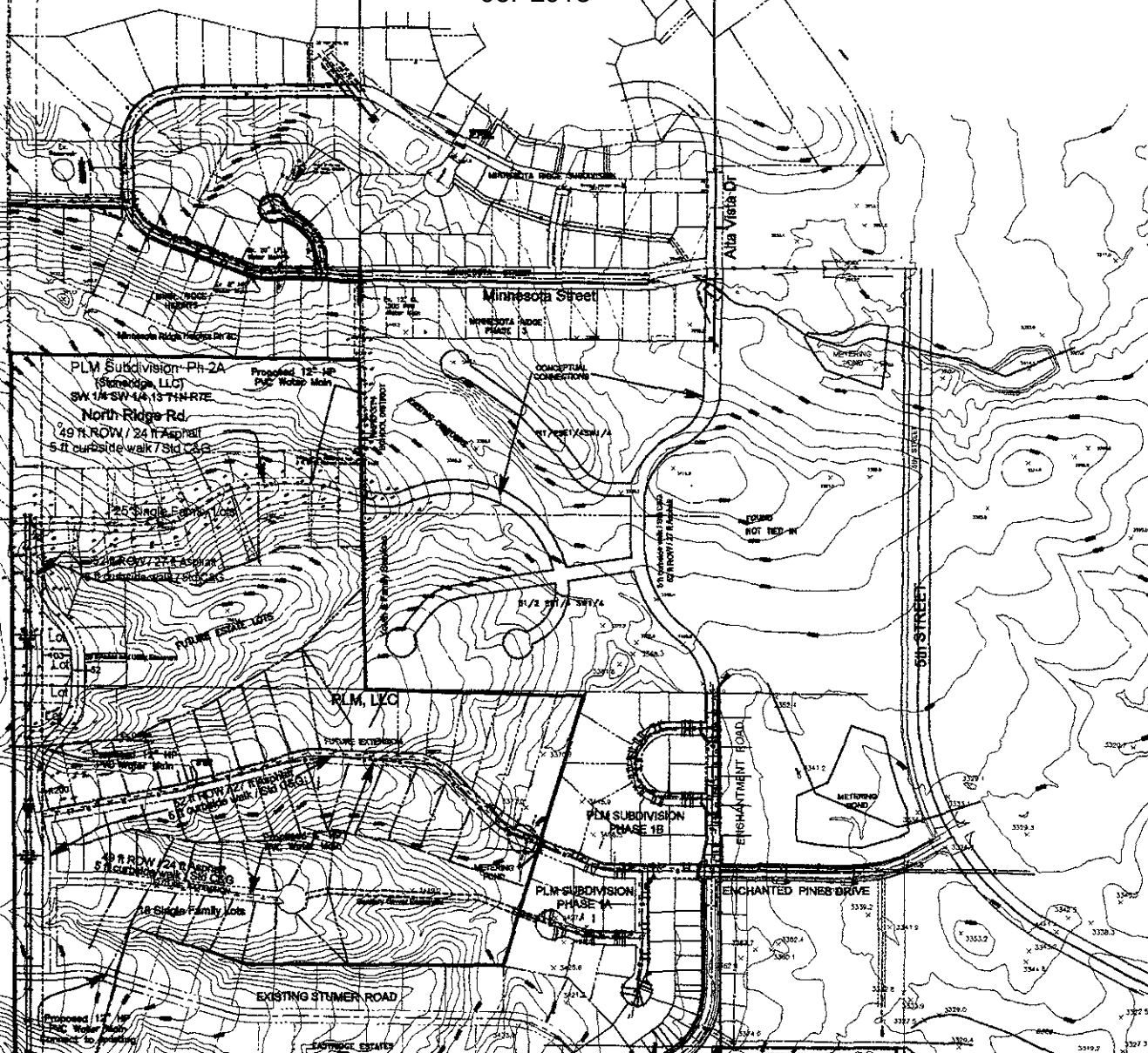
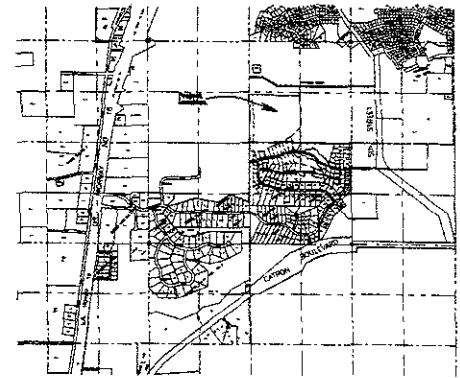




Scale: 1"=200'

**PLM SUBDIVISION PHASE 2A:
LAYOUT PLAN**



Notes:
 Use 2004 City of Rapid City Standard Specifications & Details.
 Field verify location & elevation of all existing features prior to beginning work.
 Contact "CALL-ONE" prior to beginning work.
 Obtain Air Quality permit prior to beginning work.
 Place & maintain sediment barriers. Prevent sediment from leaving work zone.
 Place "Construction Ahead" & "Truck Entrance" signs in Minnesota Street. Other signing required per Manual of Uniform Traffic Control Devices (MUTCD).
Sediment Control Notes:
 The work area is enclosed in an NPOES Permit issued by the SD DNR. Contractor shall use Rapid City standard sediment control devices.

Water Main Notes:
 Regarding Water Main and appurtenances, Ref. Rapid City 2004 Standard Specifications as applicable for cathodic protection.
 For ALL metallic components as applicable:
 1. Use ONLY granular backfill, clean sand or soil with non-corrosive properties to bedding (18" in all directions, or flowable RM 12" of direction around metallic components).
 2. Use ONLY Cor-Blue series 300 rebar/tees or equal.
 3. DOUBLE wrap w/ polyethylene and security tape ends to entire pipe.
 Use ONLY high deflection pipe couplings Rampro style 501 or equal when vertical or horizontal deflections needed at locations other than bends shown.

PIPE RESTRAINT TABLE: EBAA min Series 1600 or equal
 Ratio Water Zone: 3348
 Dead End & Valves (each way):
 Tee: 6:0 - 2ft along b' branch,
 6" x 11 1/2" deep, bend
 6" x 11 1/2" deep, bend
 6" x 45 deep/bend
 12ft Tee, 9" to along 8" branch

Legend

Symbol	Description
---	Contractor Existing
---	Contractor Proposed
---	Gas Line Existing
---	Gas Line Proposed
---	Water Main Existing
---	Water Main Proposed
---	Electric Existing
---	Electric Proposed
---	Storm Sewer Existing
---	Storm Sewer Proposed
---	Sanitary Sewer Existing
---	Sanitary Sewer Proposed
---	Water Line Existing
---	Water Line Proposed
---	Electric Pole
---	Electric Pole
---	Drainage Direction

**CITY OF RAPID CITY
GROWTH MANAGEMENT DEPT
DEVELOPMENT SERVICES**

Not a legal plat of the property.

06-101 PLM Subdivision Phase 2A Layout Plat