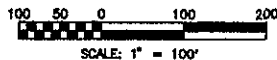
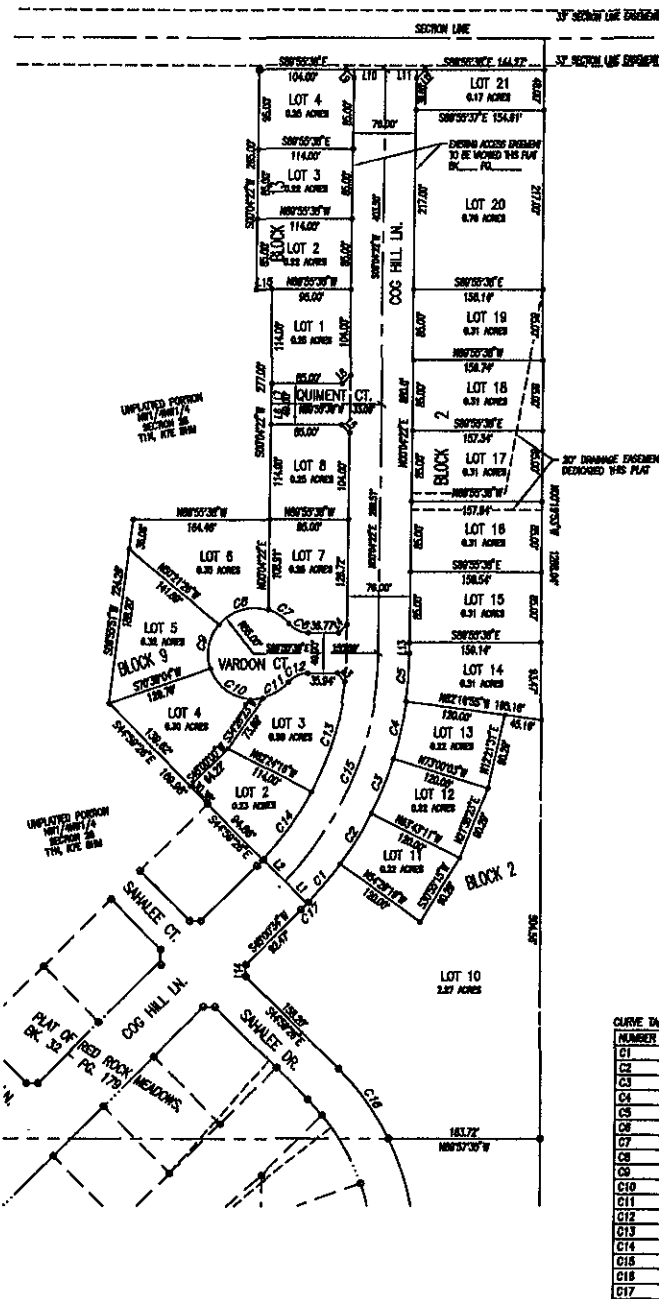


PLAT OF RED ROCK MEADOWS SUBDIVISION
LOTS 10 THRU 21, BLOCK 2; LOTS 2 THRU 8, BLOCK 9; LOTS 1 THRU 4, BLOCK 13;
SECTION 28, T.1N., R.7E., B.H.M., RAPID CITY, PENNINGTON COUNTY, SOUTH DAKOTA

RECEIVED

JAN 13 2006

Rapid City Growth
Management Department



LINE TABLE

NUMBER	DIRECTION	DISTANCE
L1	S 47°00'00" E	38.16'
L2	S 47°00'00" E	37.87'
L3	S 42°39'00" E	13.59'
L4	S 47°04'22" W	14.14'
L5	N 44°55'38" W	14.14'
L6	S 07°04'22" W	24.50'
L7	N 07°04'22" E	24.50'
L8	N 47°04'22" E	14.14'
L9	S 44°55'38" W	14.14'
L10	N 89°55'38" W	48.00'
L11	S 89°55'38" E	48.00'
L12	N 47°04'22" E	14.14'
L13	N 07°04'22" E	13.22'
L14	N 07°00'34" E	14.14'
L15	N 89°55'38" W	18.00'

CURVE TABLE

NUMBER	ADIUS	DELTA ANGLE	ARC L	TANGENT	CHORD	DIRECTION	CHORD L
C1	438.00	0°78'14"	66.10	30.10	S 39°29'32" W	66.05	
C2	438.00	0°18'52"	70.95	35.53	N 32°55'15" E	70.87	
C3	438.00	0°18'52"	70.95	35.53	N 21°39'23" E	70.87	
C4	438.00	0°18'52"	70.95	35.53	N 12°21'31" E	70.87	
C5	438.00	0°18'52"	70.95	35.53	S 03°54'45" W	58.40	
C6	30.00	90°07'13"	28.24	14.03	N 89°00'40" E	28.41	
C7	55.00	32°04'57"	30.83	16.83	N 69°14'53" W	30.43	
C8	55.00	68°28'04"	65.00	37.40	S 73°51'36" W	61.96	
C9	55.00	90°59'31"	54.63	31.11	S 10°00'46" W	54.18	
C10	55.00	82°40'38"	76.39	48.38	S 87°41'15" E	72.86	
C11	55.00	38°01'17"	36.80	18.95	S 66°57'47" W	36.83	
C12	30.00	90°07'13"	28.24	14.03	N 89°00'40" E	28.41	
C13	382.00	22°03'34"	138.37	76.08	S 16°33'57" W	138.51	
C14	382.00	15°49'30"	100.00	60.32	S 35°30'54" W	89.88	
C18	480.00	43°31'10"	303.84	150.87	N 21°50'07" E	298.58	
C19	324.00	18°29'53"	104.36	52.63	S 35°49'10" E	103.82	
C17	438.00	0°18'52"	12.13	8.06	N 47°12'58" E	12.13	

NOTES:
● Denotes set 5/8" rebar with survey cap marked "ARLETH 3977".
○ Denotes Found Survey Monument w/cap as noted.
ZZZ Denotes Non-Access Easement per this Plat

- MINOR DRAINAGE AND UTILITY EASEMENTS ARE HEREBY ESTABLISHED 8' WIDE ON THE INTERIOR SIDE OF ALL LOT LINES AND RIGHT-OF-WAY, (EXCEPT WHERE MAJOR DRAINAGE EASEMENTS ARE LOCATED)
- TOTAL PLATTED AREA: 10.83 ACRES; LOTS: 2.16 ACRES; PUBLIC RIGHT-OF-WAY: 8.67 ACRES.
- ANY MAJOR DRAINAGE EASEMENT SHOWN HEREON SHALL BE KEPT FREE OF ALL OBSTRUCTIONS INCLUDING BUT NOT LIMITED TO BUILDINGS, WALLS, FENCES, HEDGES, TREES, AND SHRUBS. THESE EASEMENTS GRANT TO ALL PUBLIC AUTHORITIES THE RIGHT TO CONSTRUCT, OPERATE, MAINTAIN, INSPECT AND REPAIR SUCH IMPROVEMENTS AND STRUCTURES AS IT DEEMS EXPEDIENT TO FACILITATE DRAINAGE FROM ANY SOURCE.
- NON-ACCESS EASEMENTS ARE HEREBY ESTABLISHED ALONG THE FIRST FORTY FEET OF CORNER LOTS OR AS INDICATED HEREON.
- ALL BUILDERS SHALL MAINTAIN EXISTING DRAINAGE FACILITIES IN ACCORDANCE TO APPROVED CONSTRUCTION PLANS. (Rapid City Eng. Div. REQUESTED NOTE)
- ALL ON-SITE WASTE WATER DISPOSAL SYSTEMS SHALL BE DESIGNED, INSPECTED AND CERTIFIED BY A PROFESSIONAL ENGINEER.
- ACREAGE SHOWN ON LOTS INCLUDE EASEMENTS.
- ALL LOTS SHALL CONNECT TO CITY SANITARY SEWER WITHIN 6 MONTHS OF AVAILABILITY OF CITY SEWER SERVICE TO THE LOTS. OWNERS SHALL MAINTAIN THE SEPTIC TANK IN ACCORDANCE WITH STATE AND CITY STANDARDS.

REVISED: _____
REVISED: _____
REVISED: _____

PREPARED BY:
ARLETH & ASSOCIATES

26 KIRK ROAD
DEADWOOD, SD 57732
605-578-1687

JOB NO. 05-0390
DATE: _____
SCALE: 1" = 100'
DRAWN: _____

APPROVED: JMA
REV. DATE: _____

Prepared for:
Dream Design International, Inc.
528 Kansas City Street, Suite 4
Rapid City, SD 57701
605.343.0538 engineers@dreamdesign.com