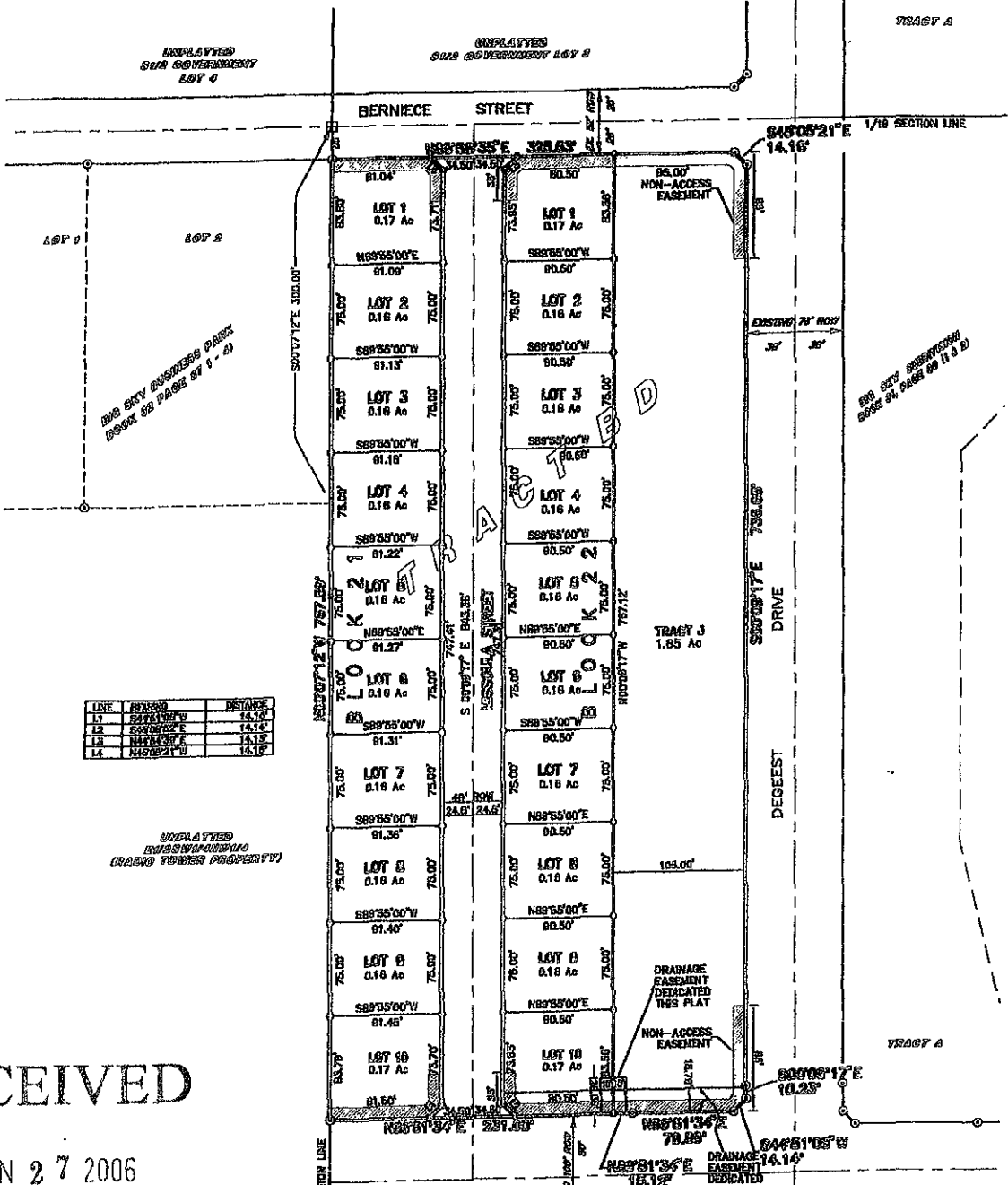


06PD003

**DOG SKY SUBDIVISION**

LOT 1 THRU 10 OF A 1/16 SECTION 14 OF T12N R10E S14E, BLOCK 22, TRACT J, A DEDICATED OFFLOT, BEING A CONTIGUOUS TRACT NO. LOCATED IN THE S.W. QUARTER OF SECTION 8, T12N, R10E, S14E, CITY OF RAPID CITY, PENNINGTON COUNTY, SOUTH DAKOTA



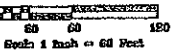
LINE	BEARING	DISTANCE
L1	S89°55'00\"W	14.14'
L2	S89°55'00\"E	14.14'
L3	N89°55'00\"E	14.14'
L4	N89°55'00\"W	14.14'

UNPLATTED  
BY 5337N/4037W/10  
(DRAWN FOR THIS PROPERTY)

**RECEIVED**  
MAY 27 2006  
City Growth  
Department

- LEGEND**
- DENOTES SET 5/8" REBAR WITH SURVEY CAP MARKED "RLS 3877"
  - DENOTES FOUND 5/8" REBAR WITH SURVEY CAP MARKED "RLS 3877"
  - DENOTES FOUND SURVEY MONUMENT AS NOTED
- NOTE**  
PLAT OF TRACT 8D  
RECORDED IN PLAT BOOK 32 PAGE 150

- NOTES**
1. MAJOR DRAINAGE AND UTILITY EASEMENTS ARE HEREBY ESTABLISHED 8' WIDE ON THE INTERIOR SIDE OF ALL LOT LINES AND RIGHT-OF-WAY. (EXCEPT WHERE MAJOR DRAINAGE EASEMENTS ARE LOCATED)
  2. TOTAL PLATTED AREA: 5.81 ACRES; LOTS: 4.80 ACRES DEDICATED PUBLIC ROW: 0.82 ACRES
  3. ANY MAJOR DRAINAGE EASEMENT SHOWN HEREON SHALL BE KEPT FREE OF ALL OBSTRUCTIONS INCLUDING BUT NOT LIMITED TO BUILDINGS, WALLS, FENCES, HEDGES, TREES, AND SHRUBS. THESE EASEMENTS GRANT TO ALL PUBLIC AUTHORITIES THE RIGHT TO CONSTRUCT, OPERATE, MAINTAIN, INSPECT AND REPAIR SUCH IMPROVEMENTS AND STRUCTURES AS IT DEEMS EXPEDIENT TO FACILITATE DRAINAGE FROM ANY SOURCE.
  4. NON-ACCESS EASEMENTS ARE HEREBY ESTABLISHED ALONG THE FIRST FIFTY FEET OF CORNER LOTS OR AS INDICATED HEREON.



PREPARED BY  
**ARLETH & ASSOCIATES**

25 KIRK ROAD  
DEADWOOD, SD 57732  
805-678-1637

JOB NO.  
04-0048

DATE: 11/10/06  
SCALE: 1" = 60'  
DRAWN: REC

APPROVED: JMA  
DWO: 04-0048P.DTD

PREPARED FOR:  
DRAKE DESIGN INTERNATIONAL, INC.  
600 KANAWA CITY STREET, SUITE 4  
RAPID CITY, SOUTH DAKOTA 57701  
(605) 848-0550