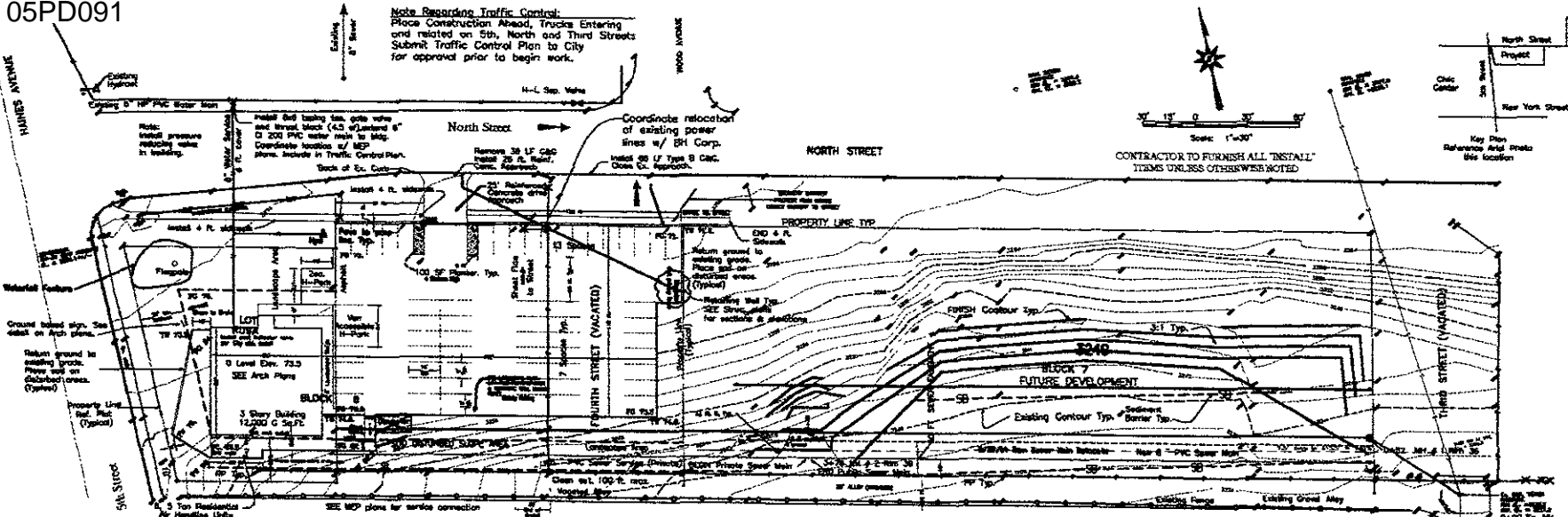


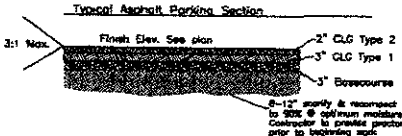
Note: Reschedule Traffic Control. Place Construction Ahead, Trucks Entering and exiting on 5th, North and Third Streets. Submit Traffic Control Plan to City for approval prior to begin work.



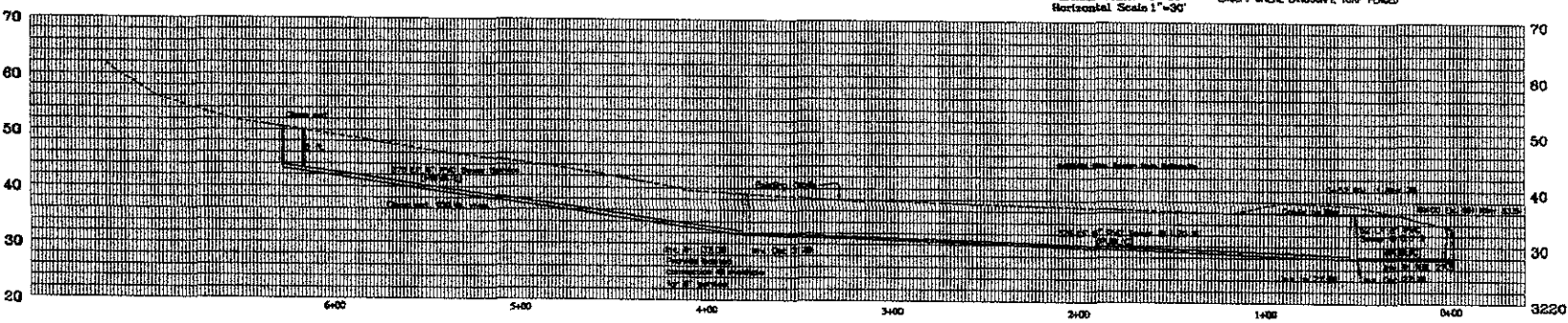
SEE Structural Plans for wall & stair details. Keep structural components out of public right of way.

REUSE, COMPACT EXISTING OR PLACE NEW 6" COMPACTED GRAVEL IN VACATED ALLEY 20 FT WIDE, MAINTAIN EXISTING GRADE

NOTES:  
 SPECIFICATIONS TO BE USED: CITY OF RAPID CITY STANDARD SPECIFICATIONS AND DETAILS FOR UTILITIES & PUBLIC WORKS CONSTRUCTION.  
 COORDINATE WITH CITY AND PRIVATE UTILITIES PRIOR TO BEGIN WORK.  
 OBTAIN FUGITIVE DUST CONTROL PERMIT.  
 PLACE AND MAINTAIN SELF FENCE, STRAIN BALES OR SIMILAR EROSION CONTROL AND SEDIMENT TRAP DEVICES. REFERENCE CITY STANDARD DETAILS 146 1A TO 1C. SEE LOCATION ON PLANS, ADJUST AS NEEDED OR ADD ADDITIONAL TO CONTROL SEDIMENT OR AS DIRECTED BY CITY. PREVENT SEDIMENT FROM LEAVING CONSTRUCTION SITE. REPAIR EROSION AS NEEDED.  
 PROVIDE & MAINTAIN 30 FT. L X 24 FT. W X 3" CLEAN ROCK TRANSITION BETWEEN EXISTING PAVEMENT AND WORK AREA ACCESS POINTS UNTIL FINAL PAVING COMPLETE. 3RD ST AND NORTH ST ENTRANCES  
 SEED, FERTILIZE AND MULCH DISTURBED AREAS IMMEDIATELY UPON COMPLETION OF WORK. USE CITY "ROAD DITCH MIX" SEED MIX EXCEPT WHERE LANDSCAPE TURF PLACED



PROFILE Vertical Scale: 1"=10' Horizontal Scale: 1"=30'



Topo Survey and 2 ft. contours from Hanson Surveying. 2 ft. contours deleted from inside work area for clarity.

CSU PROPERTIES LLC  
 OFFICE BUILDING

ARCHITECTS AND PLANNERS  
 GALYARDT ASSOCIATES INC.

12-27-05  
 SITE PLAN  
 SEE Revisions Noted

CENTERLINE

741 S. 1st Street, Suite 210, Rapid City, SD 57701  
 Phone: (605) 341-3151 Fax: (605) 341-3158  
 Website: www.galyardt.com

REV. DATE 2002  
 PREPARED BY  
 CHECKED BY  
 DATE FILE

01.1

DATE: 12/27/05  
 TIME: 10:00 AM  
 DRAWN BY: J. H. HANSON  
 CHECKED BY: J. H. HANSON

For PCD Amendment