

RECEIVED

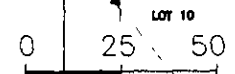
THE BELLEVIEW CONDOS

LOT 1 BLOCK 5 OF KATELAND SUBDIVISION
LOCATED IN THE SE 1/4 OF THE SW 1/4,
SECTION 13, T2N, R7E, BHM,

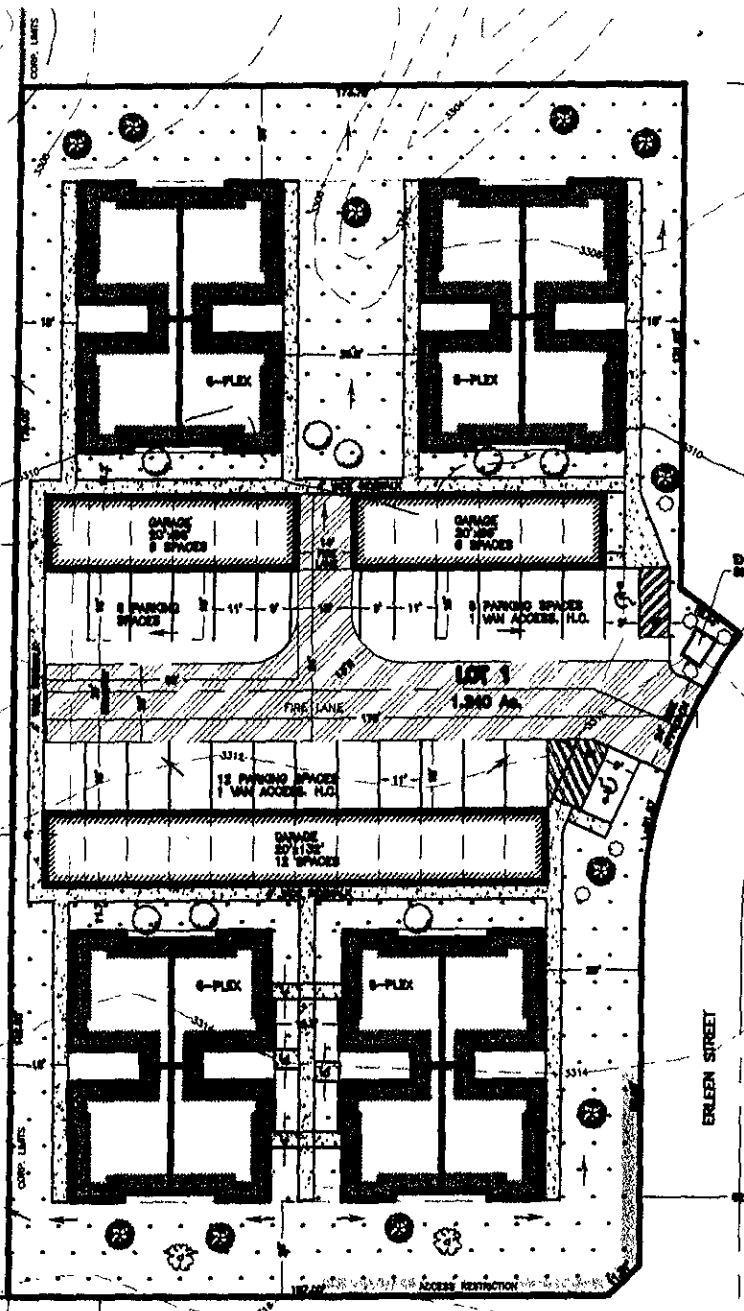
RAPID CITY, PENNINGTON COUNTY, SOUTH DAKOTA

DEC 09 2005

Rapid City Growth
Management Department



SCALE: 1" = 50'
DECEMBER 7, 2005



LOT 11

LOT 10

ERLEEN STREET

60' WIDE ROW OF RECORD

COUNTRY ROAD

60' WIDE ROW OF RECORD

C:\DRAWINGS\3076\PLAN-3076.dwg, 8x11, 12/7/2005 3:12:59 PM