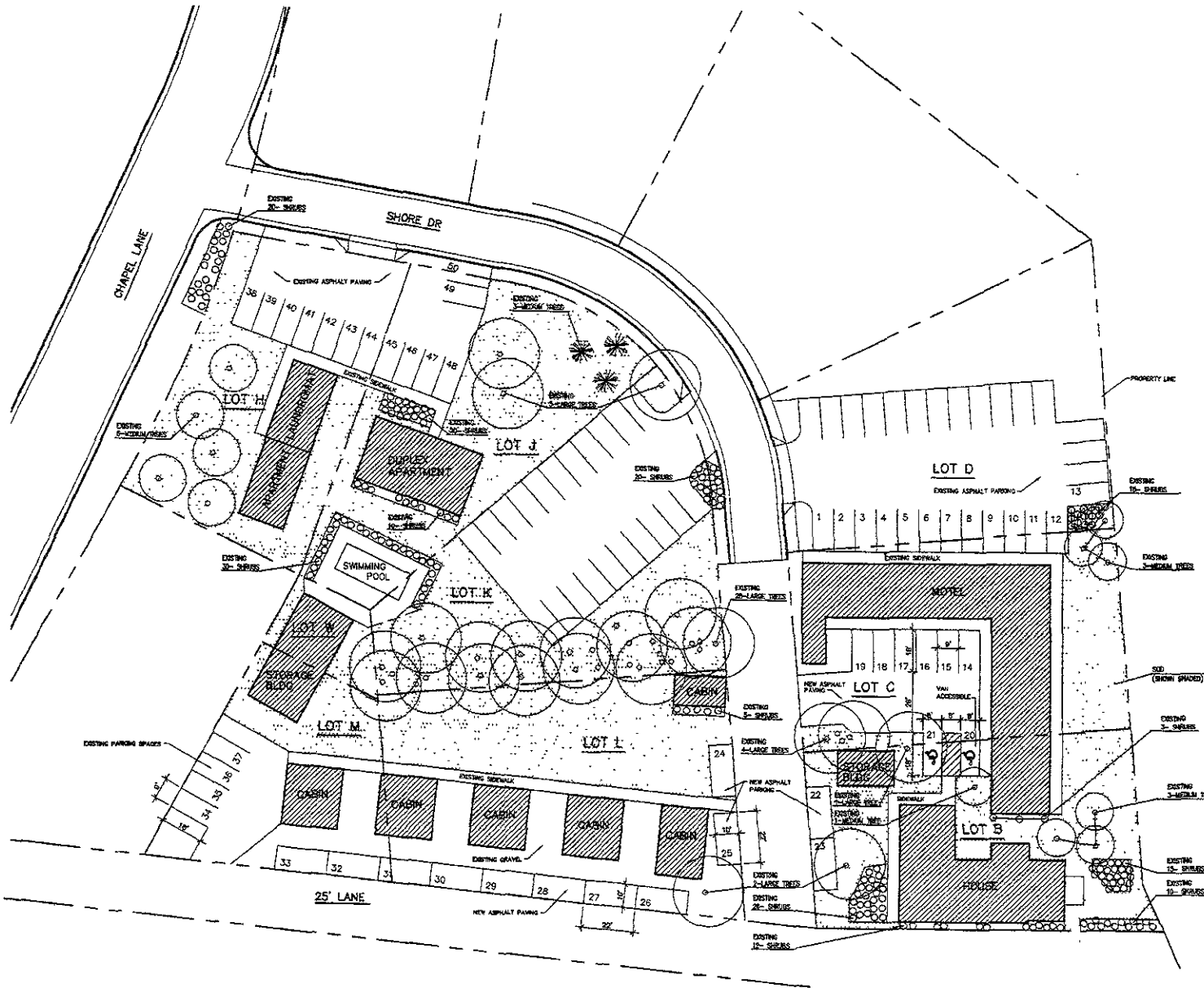


RECEIVED

DEC 09 2005

Rapid City Growth  
Management Department



**LANDSCAPE MATERIAL POINTS:**

TOTAL AREA OF LOTS (LOCAL/STATE/ED. FT.)	= 53,189.0
TOTAL AREA OF EXISTING BUILDING COVERAGE (SQ. FT.)	= 14,907.0
TOTAL LANDSCAPE MATERIAL POINTS REQUIRED	= 78,226.0
36 LARGE TREE @ 2,000 PPS/EA.	= 72,000.0
15 MEDIUM TREE @ 1,000 PPS/EA.	= 15,000.0
186 SHRUBS @ 250 PPS/EA.	= 46,500.0
SSD 3,789.0 YARDS @ 10 PPS/YD	= 37,890.0
TOTAL LANDSCAPE MATERIAL POINTS PROVIDED	= 175,390.0

**PARKING REQUIREMENTS:**

13 UNIT MOTEL	= 13 SPACES
GUEST HOUSE	= 19 SPACES
6 CABINS	= 6 SPACES
APARTMENT	= 1 SPACE
LAUNDRY/MAT	= 3 SPACES
DUPLEX APARTMENT	= 2 SPACE
TOTAL PARKING SPACES REQUIRED	= 40 SPACES
TOTAL PARKING SPACES PROVIDED	= 50 SPACES (INCLUDES TWO N.C. SPACES)

SITE PLAN  
1" = 20'-0"



**CANYON LAKE RESORT**  
RAPID CITY, SD.  
SHEET 1 OF 1  
11/12/05  
COPY RIGHT 2005