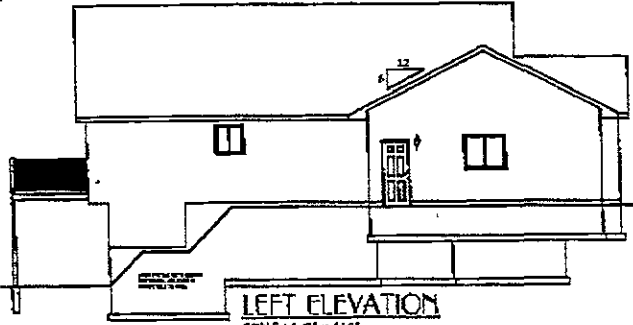


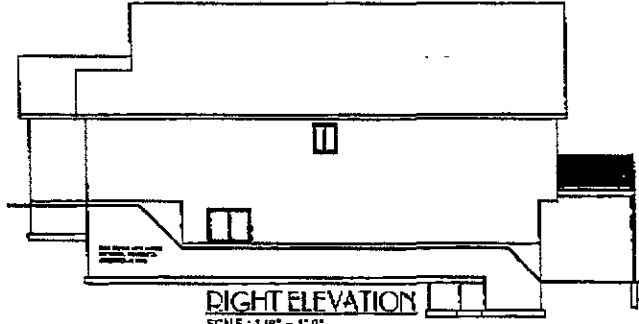
REAR ELEVATION  
SCALE: 1/8" = 1'-0"

WINDOWS  
ABOVE  
Yes!

*Rainbow*

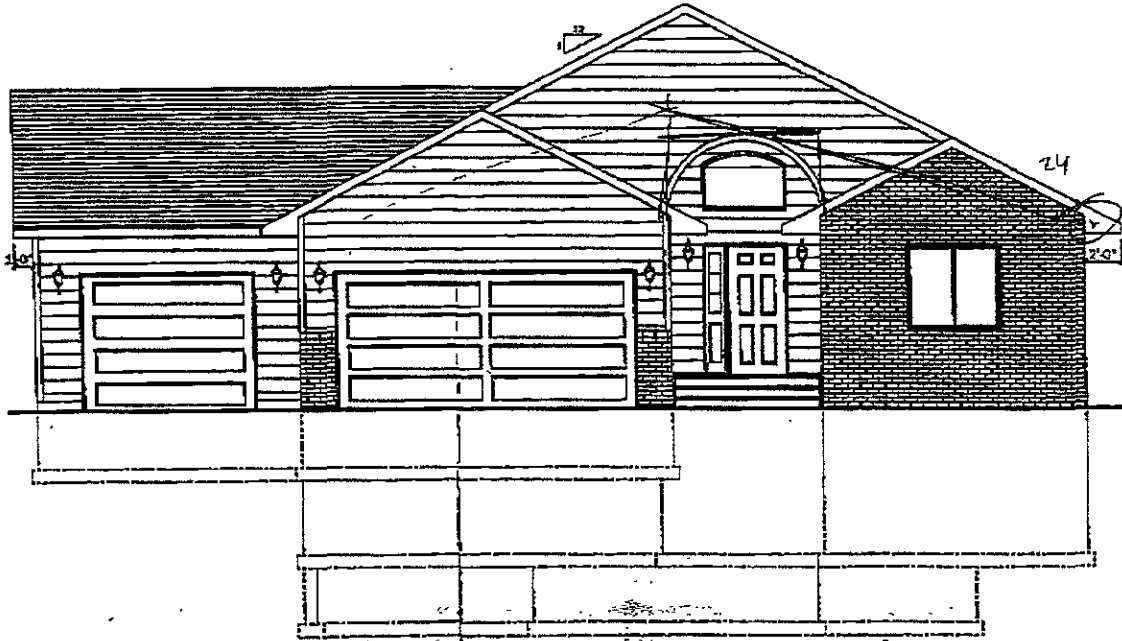


LEFT ELEVATION  
SCALE: 1/8" = 1'-0"

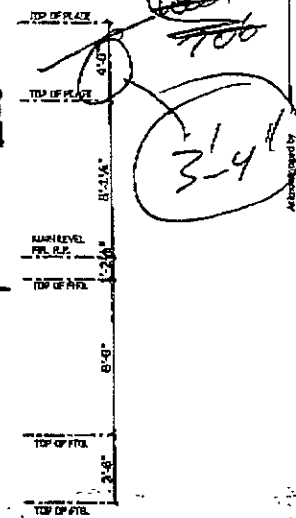


RIGHT ELEVATION  
SCALE: 1/8" = 1'-0"

United Building Centers  
Rainbow Building  
Contract: SCOTT 10/11  
Rapid City Growth  
Partnership  
ELEVATION



FRONT ELEVATION  
SCALE: 1/4" = 1'-0"



Rapid City Growth

DEC 7 2005

RECEIVED

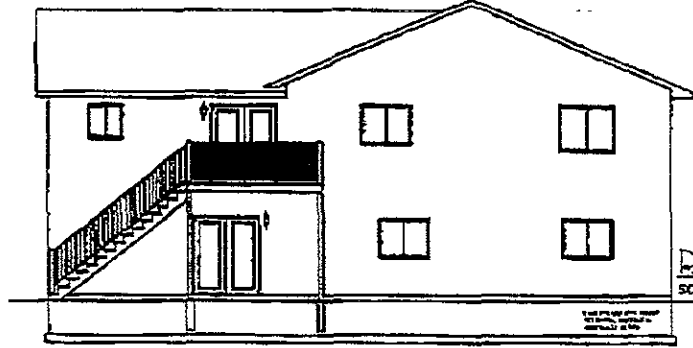
*Chuck*

RECEIVED

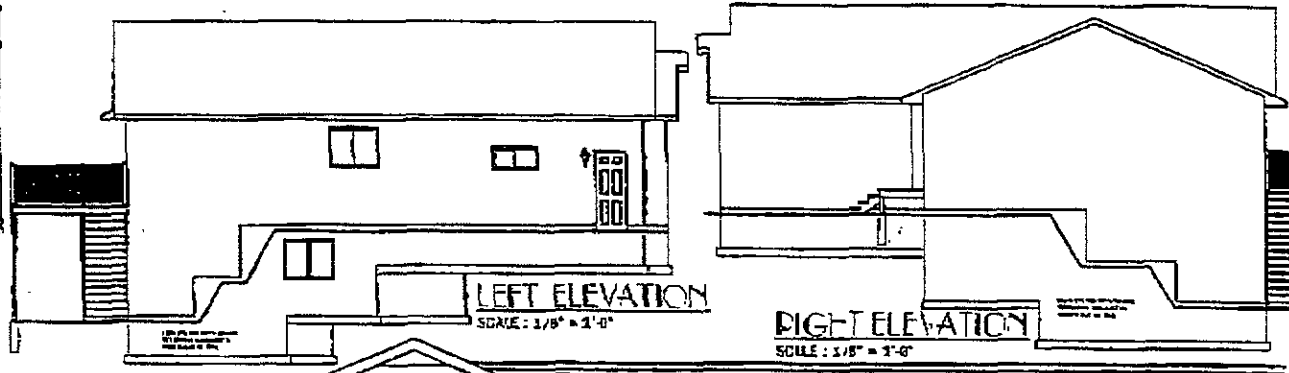
UNITED BUILDING CENTERS  
 10000 10th Street, NW  
 Washington, DC 20004  
 (202) 462-1000  
 www.ubc.org

**IMPORTANT**  
 Please print clearly and legibly. Do not use all caps. Do not use abbreviations. Do not use symbols. Do not use handwritten notes. Do not use eraser. Do not use correction fluid. Do not use white-out. Do not use staples. Do not use paper clips. Do not use binder rings. Do not use hole punches. Do not use staples. Do not use paper clips. Do not use binder rings. Do not use hole punches.

01 OF 01

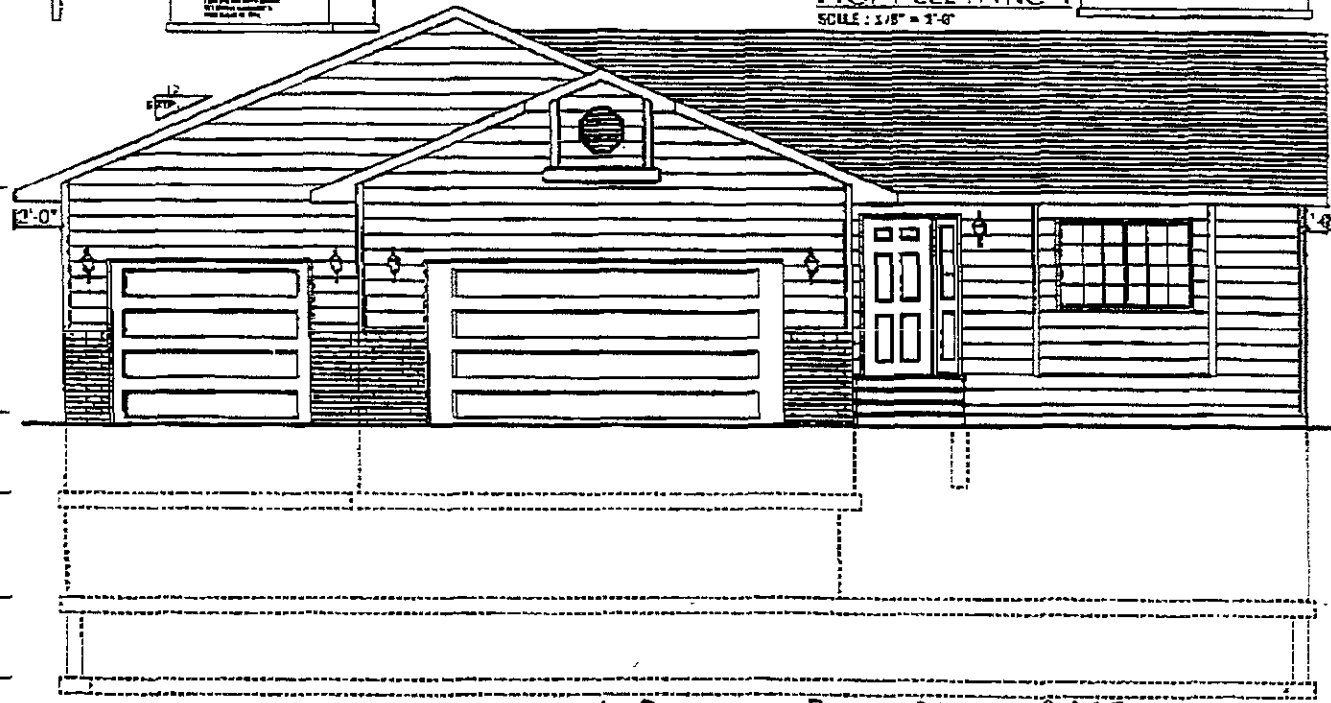


REAR ELEVATION  
SCALE: 1/8" = 1'-0"

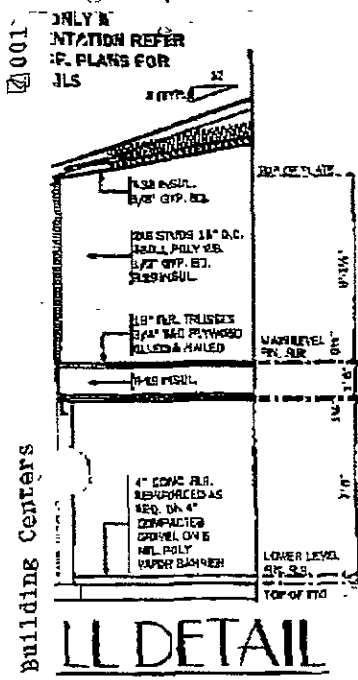


LEFT ELEVATION  
SCALE: 1/8" = 1'-0"

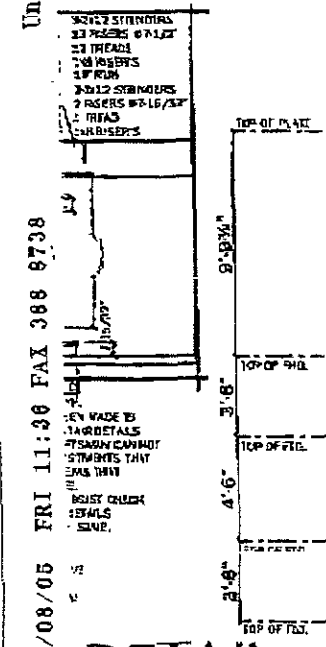
RIGHT ELEVATION  
SCALE: 1/8" = 1'-0"



FRONT ELEVATION  
KEN FIRST LOT 18 BLK 2 RAINBOW RIDGE  
4-8-05 1/8"



WALL DETAIL  
SCALE: 1" = 1'-0"



ROOF DETAIL  
SCALE: 1" = 1'-0"

001 ONLY IN INTENTION REFER TO THESE PLANS FOR ALL DETAILS

United Building Centers

04/08/05 FRI 11:36 FAX 388 8738

12/02/05 08:40 FAX 605 342 2247 LEWIS KIRKBY HALL RE