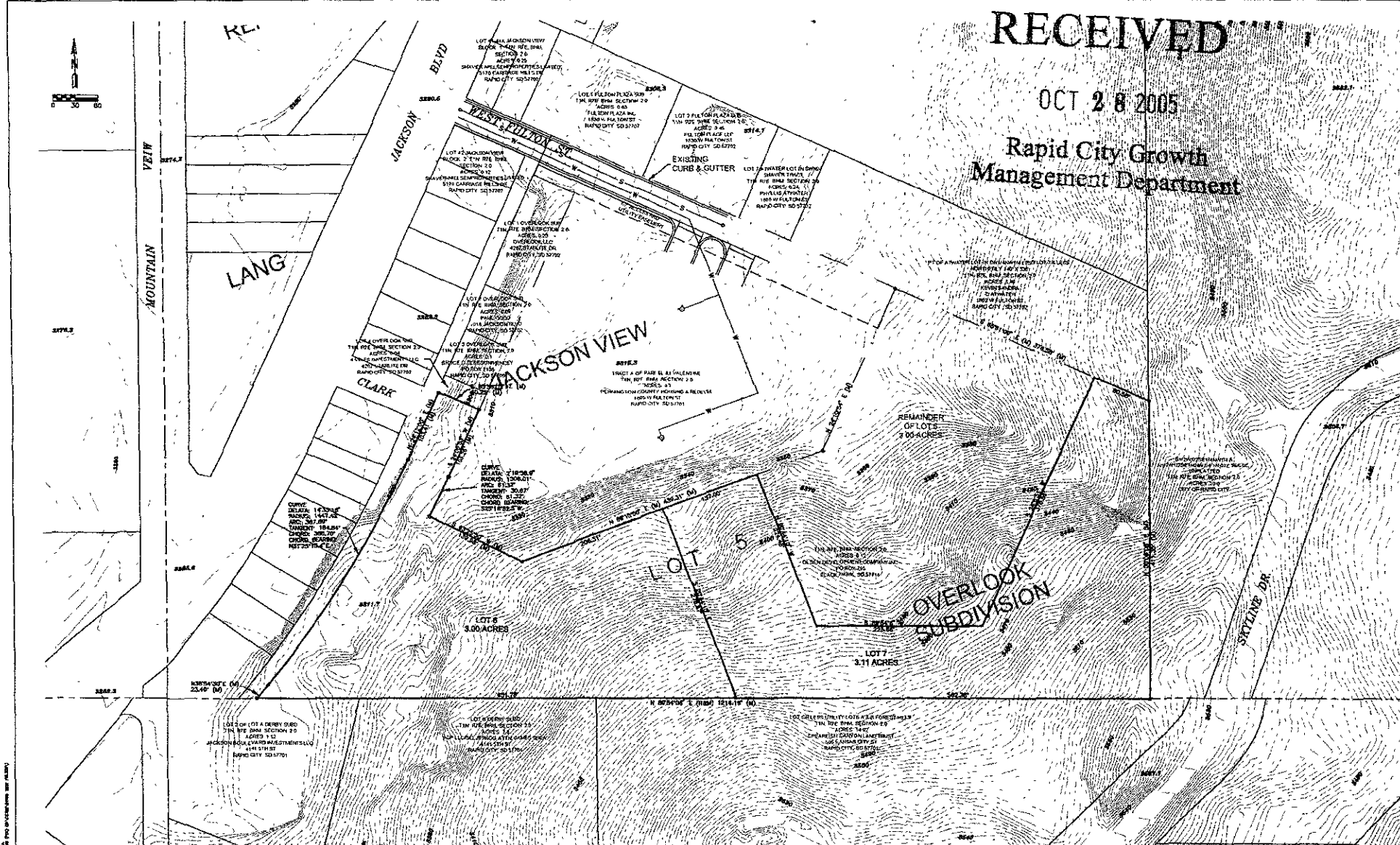


RECEIVED

OCT 28 2005

Rapid City Growth Management Department



PRELIMINARY PLAT
OF
LOTS 6 AND 7 OF LOT 5 OF OVERLOOK SUBDIVISION
LOCATED IN SW 1/4 OF SECTION 2, T1N, R7E, BHM
RAPID CITY, PENNINGTON COUNTY, SOUTH DAKOTA



1830 West Fulton Street
Rapid City, SD 57702
Phone: (605) 341-7800
Fax: (605) 341-7854
www.cetecengineering.com
Date: 10/28/05