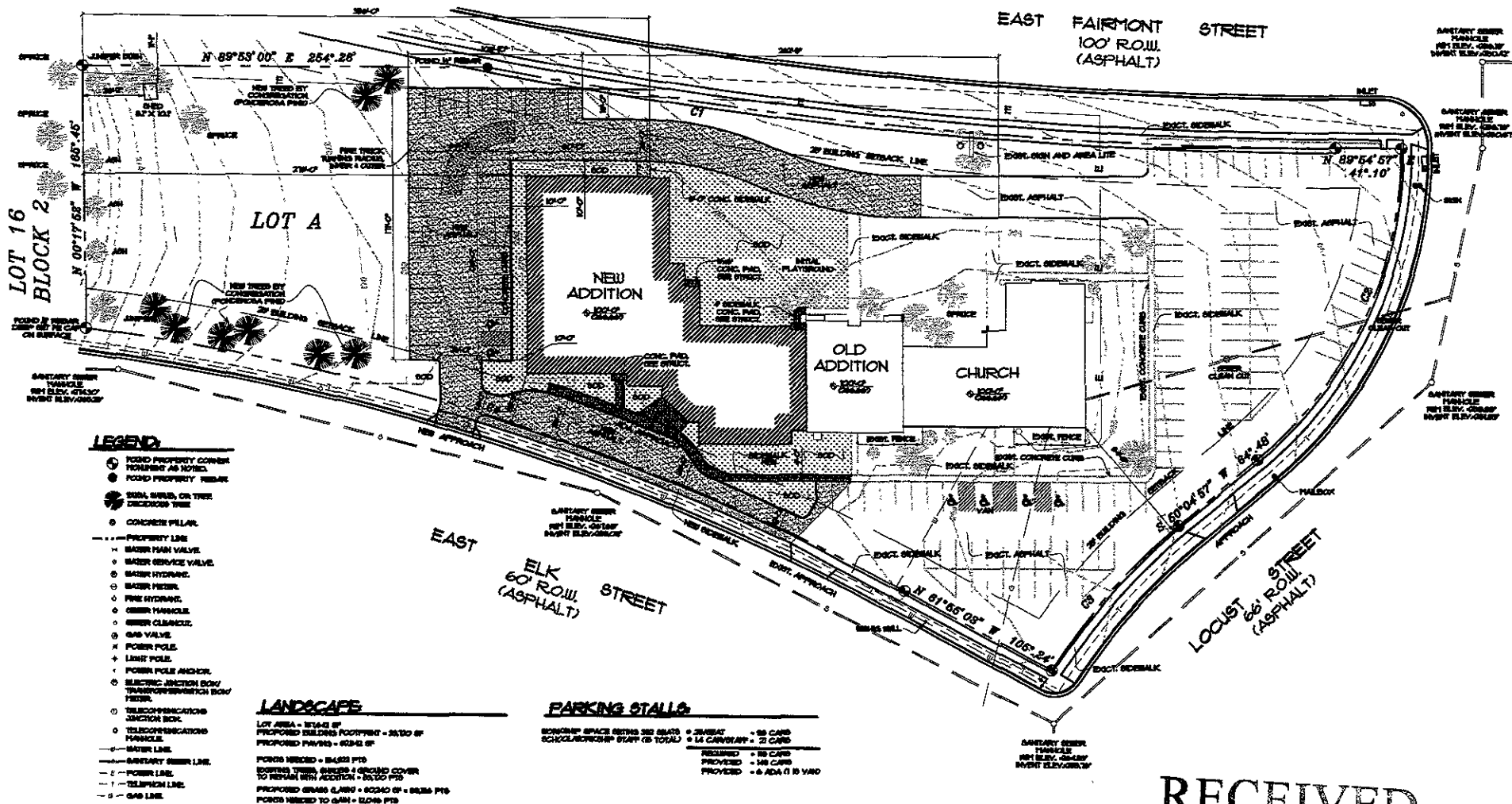


CURVE	DELTA ANGLE	RADIUS	ARC	TANGENT	CHORD	CHORD BEARING
1	107°07'37"	284.94'	517.06'	268.79'	336.50'	S 84°47'20" E
2	307°02'07"	284.94'	222.27'	193.37'	264.94'	S 24°09'59" W
3	17°49'27"	362.14'	122.5'	63.52'	121.94'	S 41°02'07" W
4	21°01'17"	1462.70'	543.00'	274.66'	335.58'	N 12°33'09" W



LEGEND

- FOUND PROPERTY CORNER
- FOUND PROPERTY MARKER
- SIGN, SHED, OR OTHER DECORATIVE ITEM
- CONCRETE PILLAR
- PROPERTY LINE
- BAKER MAIN VALVE
- BAKER SERVICE VALVE
- BAKER HYDRANT
- BAKER METER
- FIRE HYDRANT
- OTHER MANHOLE
- OTHER CLEARANCE
- GAS VALVE
- POWER POLE
- LIGHT POLE
- POWER POLE ANCHOR
- ELECTRIC JUNCTION BOX/TRANSFORMER/SWITCH BOX/FEEDER
- TELECOMMUNICATIONS JUNCTION BOX
- TELECOMMUNICATIONS MANHOLE
- WATER LINE
- SANITARY SEWER LINE
- POWER LINE
- TELEPHONE LINE
- GAS LINE

LANDSCAPE

LOT AREA = 87442 SF
 PROPOSED BUILDING FOOTPRINT = 36130 SF
 PROPOSED PAVING = 62342 SF

PODS NEEDED = 84322 PFS
 EXISTING TREES, SHRUBS + GRASS COVER TO REMAIN WITH ADDITION = 36130 PFS

PROPOSED GRASS PLANT = 80240 SF = 84388 PFS
 PODS NEEDED TO GAIN = 82446 PFS

ADD IN PONDICIA FINE COVERED + MOVED BY COMPENSATION

PARKING STALLS

REQUIRE SPACE BEHIND 300 SEATS
 SCHOOL BUS/STAFF STAY (6 TOTAL)

REQUIRED = 80 CARS
 PROVIDED = 148 CARS
 PROVIDED = 6 ADA (110 YARD)



RECEIVED

OCT 14 2005

Rapid City Growth Management D



ST. PAUL'S LUTHERAN SCHOOL ADDITION - 0511
 RAPID CITY, SOUTH DAKOTA
 DATE: 08/22/05
 DRAWN BY: AVB
 CHECKED BY: CD
 LANSKAP PLAN
 1051 SHERMAN LANE, SUITE 200, RAPID CITY, SOUTH DAKOTA 57702-3405
 TEL: 605-342-3405
 ARCHITECTURE • INTERIOR • PLUMBING
 LUNDBERGER ASSOCIATES LTD.
 REGISTERED ARCHITECT
 S.D.S.A. NO. 1054
 GENE HENSLER
 SOUTH DAKOTA
 LICENSE NO. 1054