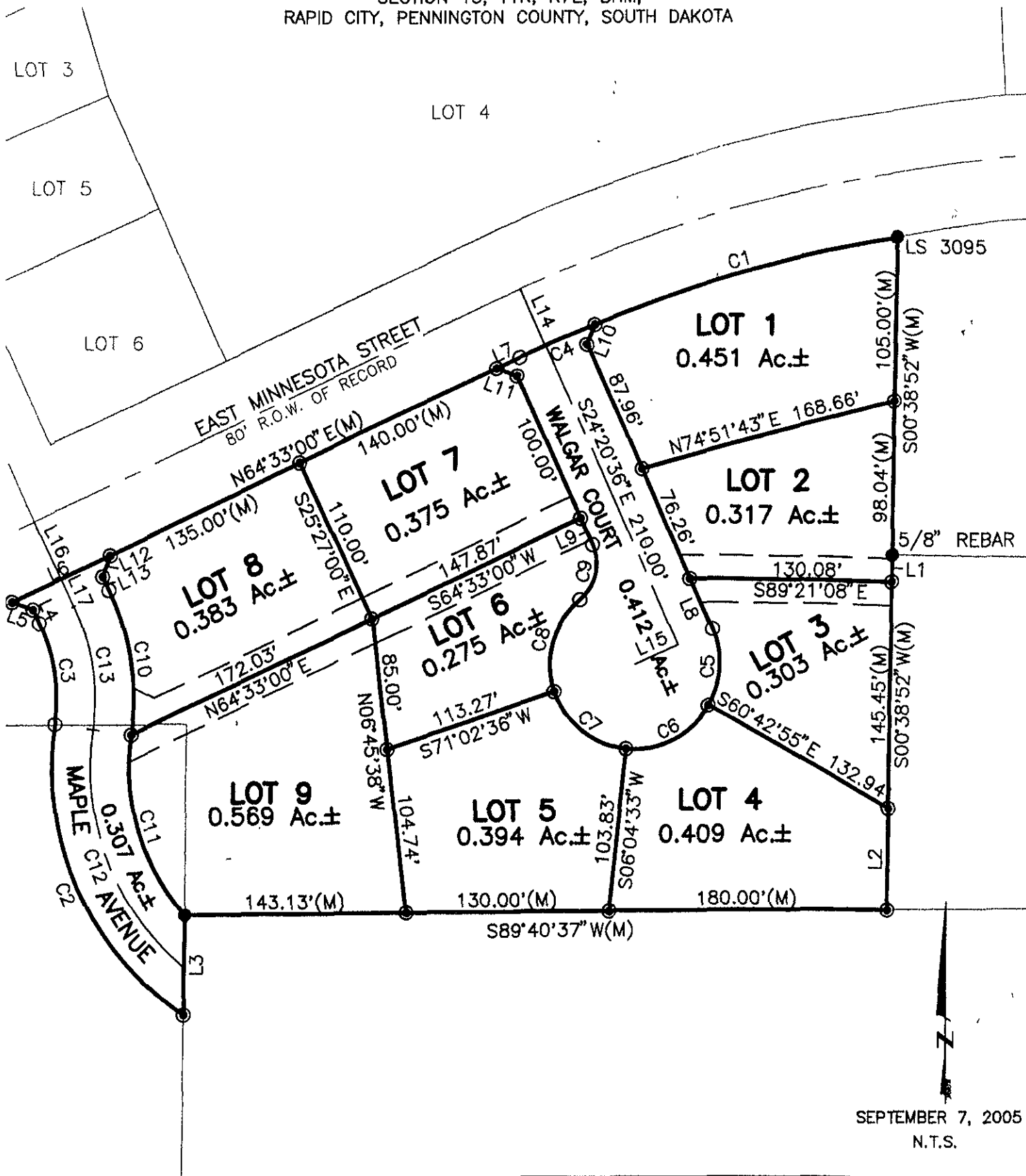


LOTS 1 THROUGH 9 OF BLOCK 3, MINNESOTA PARK SUBDIVISION

(formerly a portion of Tract A of Robbinsdale Addition No. 10
and a portion of Tract B of Robbinsdale Addition No. 10)
LOCATED IN THE NE 1/4 OF THE SE 1/4,
SECTION 13, T1N, R7E, BHM,
RAPID CITY, PENNINGTON COUNTY, SOUTH DAKOTA



SEPTEMBER 7, 2005
N.T.S.