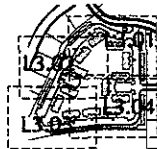
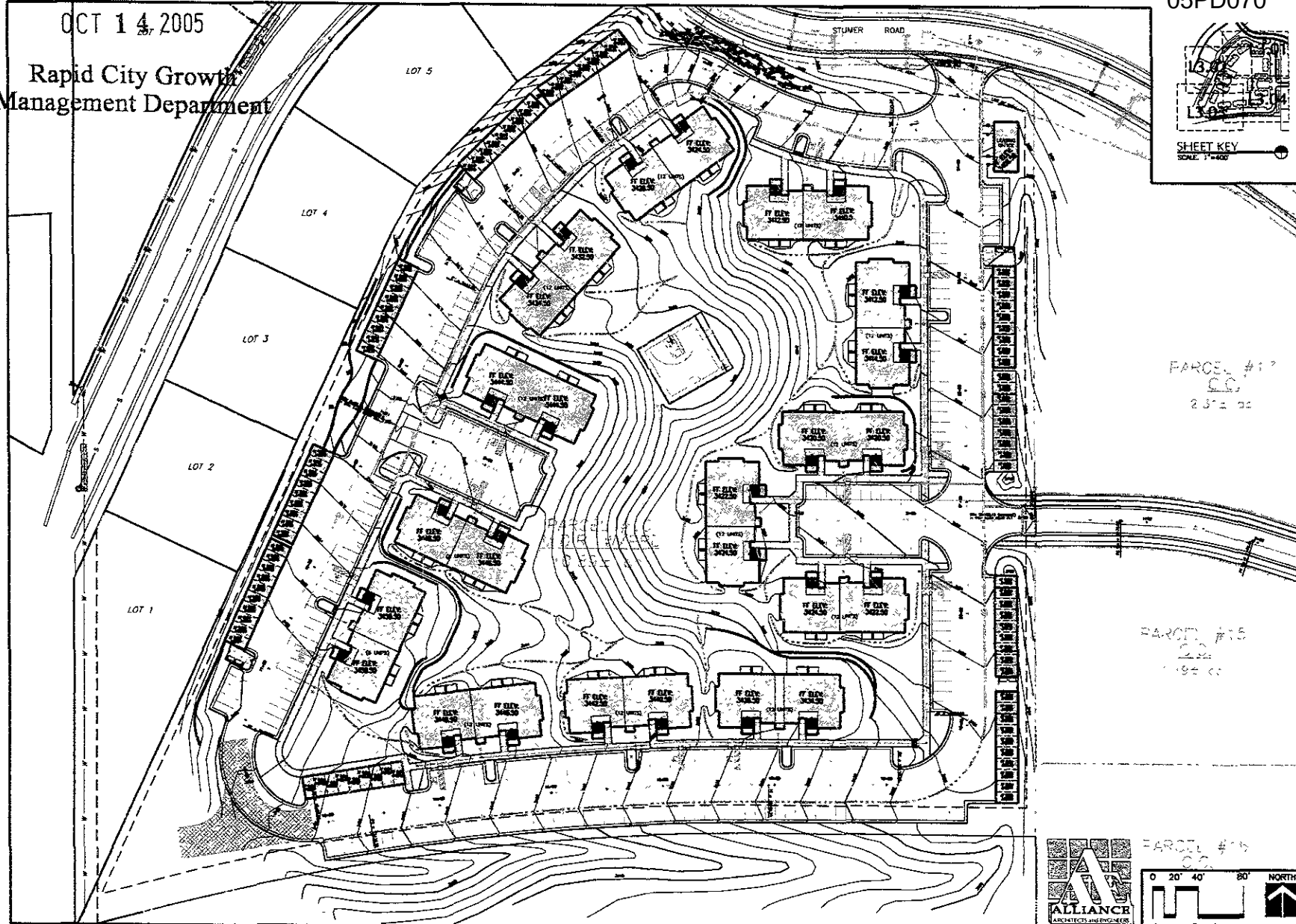


OCT 14, 2005

05PD070

Rapid City Growth Management Department

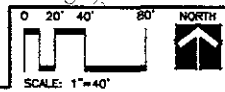


SHEET KEY
SCALE: 1"=40'

PARCEL #17
23' x 30'

PARCEL #15
19' x 30'

PARCEL #16
02'



WYSS ASSOCIATES, Inc.
 Landscape Architecture
 Golf Course Architecture
 Parks & Recreation Design
 720 South Street - Rapid City, South Dakota 57701-3870
 phone: 605-343-6568
 email: info@wyssassociates.com

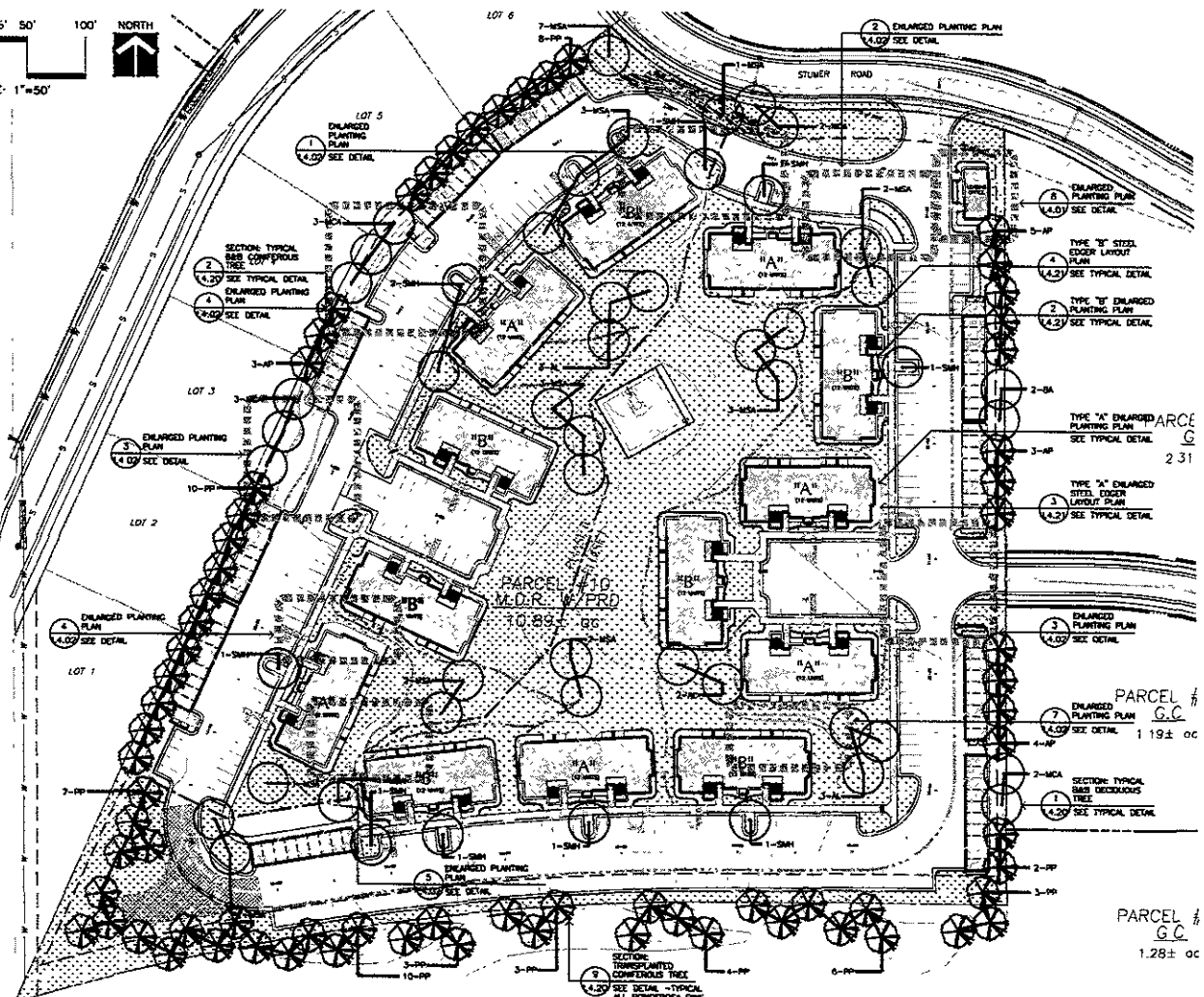
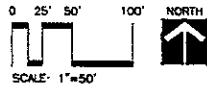
Black Hills Estates
 Eagle Ridge
 Rapid City, South Dakota

Overall Grading Plan

DESIGNED BY	MOSP	
DRAWN BY	OM	
APPROVED BY	P	
PROJECT NO.	055	
DATE	October 14, 2005	
NO.	REVISION	DATE

Sheet No. **C3.00**
 of 13

Characteristics of Associated Soils: All reports shall be submitted to the Rapid City Growth Management Department for review. All information is the property of the engineer/draftsman. All computer-generated information is the property of the engineer/draftsman. All reports shall be submitted to the Rapid City Growth Management Department for review. All information is the property of the engineer/draftsman. All computer-generated information is the property of the engineer/draftsman.



GENERAL PLANTING NOTES

1. CONTRACTOR SHALL LOCATE AND PROTECT ALL EXISTING UTILITIES. CONTRACTOR SHALL REPAIR OR REPLACE ANY DAMAGED UTILITIES AT HIS COST TO OWNER.
2. ALL PLANT MATERIAL SHALL CONFORM TO THE CRITERIA ESTABLISHED BY THE CURRENT AMERICAN STANDARD FOR NURSERY STOCK, PUBLISHED BY THE AMERICAN ASSOCIATION OF NURSERYMEN OR EQUIVALENT.
3. ALL TREE AND SHRUB LOCATIONS SHALL BE STAKED BY CONTRACTOR AND APPROVED BY PROJECT LANDSCAPE ARCHITECT.
4. ALL PLANTS SHALL BEAR THE SAME RELATIONSHIP TO FINISHED GRADE AS THE PLANTS' ORIGINAL GRADE BEFORE DIGGING.
5. ALL PLANTS AND STAKES SHALL BE SET PLUMB UNLESS OTHERWISE SPECIFIED.
6. ALL PLANTS SHALL BE INSTALLED IN ACCORDANCE WITH ALL DRAWINGS AND SPECIFICATIONS.
7. ALL SHRUB BEDS ARE TO RECEIVE SHREDDED BARK MULCH TO A 4" MINIMUM DEPTH. PERENNIAL BEDS SHALL RECEIVE 2" MULCH DEPTH. TREES ARE TO RECEIVE A 4"-6" DIA. MULCH RING WITH A MINIMUM DEPTH OF 4"
8. ALL PLANTING BEDS SHALL BE STAKED BY CONTRACTOR AND APPROVED BY LANDSCAPE ARCHITECT PRIOR TO BED PREPARATION.
9. CONTRACTOR SHALL PROVIDE LOAM FILL AS SPECIFIED FOR ALL PLANTING AREAS AND PITS.
10. PLANTING SEASONS SHALL BE FROM APRIL 15 TO JUNE 15 AND FROM SEPTEMBER 15 TO NOVEMBER 1, UNLESS OTHERWISE INDICATED.
11. CONTRACTOR IS RESPONSIBLE FOR MAINTAINING HEALTH OF ALL PLANT MATERIAL, INCLUDING TREES, SHRUBS, PERENNIALS, TURF GRASSES, AND NATIVE GRASSES UNTIL FINAL ACCEPTANCE OF PROJECT.
12. ALL PLANTS SHALL BE SPRAYED WITH AN ANTIDESICCANT WITHIN 24 HOURS OF PLANTING AND AT THE BEGINNING OF THEIR FIRST WINTER.
13. THE CONTRACTOR SHALL REFER TO THE CONTRACT SPECIFICATIONS AND PLANTING DETAILS FOR ADDITIONAL REQUIREMENTS.
14. THE CONTRACTOR SHALL PROVIDE A ONE (1) YEAR WARRANTY FOR ALL PLANT MATERIAL UNLESS OTHERWISE INDICATED IN SPECIFICATIONS.
15. SEE PHASE BOUNDARIES ON THE COVER SHEET - PHASING KEY.

PHASE I - TREE LIST

QTY	SYMBOL	COMMON NAME	BOTANICAL NAME	SIZE	COMMENTS
DECIDUOUS TREES					
5	AL	AMERICAN LINDEN	TILIA AMERICANA	2" CAL.	SPECIMEN
2	BA	BERGESSON ASH	FRAXINUS PENNSYLVANICA 'BERGESSON'	2 1/2"-3" CAL.	SPECIMEN
0	CR	CANADA RED CHERRY	PRUNUS VIRGINIANA 'CANADA RED'	2" CAL.	SPECIMEN
4	MA	MARSHALL'S ASH	FRAXINUS PENNSYLVANICA 'MARSHALL'S'	2 1/2"-3" CAL.	SPECIMEN
4	MS	MARSHALL'S SEEDLESS ASH	FRAXINUS PENNSYLVANICA 'MARSHALL'S SEEDLESS'	2" CAL.	SPECIMEN
6	SH	SHADEMASTER HONEYLOCUST	GLIETHIA TRICANTHOS 'SHADEMASTER'	2" CAL.	SPECIMEN
CONIFEROUS TREES					
34	PP	PONDEROSA PINE	PINUS PONDEROSA	6"-8" TALL	15' TALL TRANSPLANT
16	AP	AUSTRIAN PINE	PINUS NIGRA	6"-8" TALL	SPECIMEN

PHASE II - TREE LIST

QTY	SYMBOL	COMMON NAME	BOTANICAL NAME	SIZE	COMMENTS
DECIDUOUS TREES					
3	AL	AMERICAN LINDEN	TILIA AMERICANA	2" CAL.	SPECIMEN
0	MA	MARSHALL'S ASH	FRAXINUS PENNSYLVANICA 'MARSHALL'S'	2 1/2"-3" CAL.	SPECIMEN
18	MS	MARSHALL'S SEEDLESS ASH	FRAXINUS PENNSYLVANICA 'MARSHALL'S SEEDLESS'	2" CAL.	SPECIMEN
4	SH	SHADEMASTER HONEYLOCUST	GLIETHIA TRICANTHOS 'SHADEMASTER'	2" CAL.	SPECIMEN
CONIFEROUS TREES					
36	PP	PONDEROSA PINE	PINUS PONDEROSA	6"-8" TALL	15 TALL TRANSPLANT
12	AP	AUSTRIAN PINE	PINUS NIGRA	6"-8" TALL	SPECIMEN

RECEIVED
 OCT 14 2005
 Rapid City Growth
 Management Department

Wyss Associates, Inc.
 Landscape Architecture
 Golf course architecture
 Parks & Recreation Design
 728 South Street, Rapid City, SD 57701
 Phone: 605-348-8888
 Fax: 605-348-8888
 Email: info@wyssassociates.com

Project Name:
Black Hills Estates Eagle Ridge
 Rapid City, South Dakota

Project No:
Overall Planting Plan Trees

DESIGNED BY:	MSNP
DRAWN BY:	K
APPROVED BY:	P
PROJECT NO:	055
DATE:	October 14, 2005

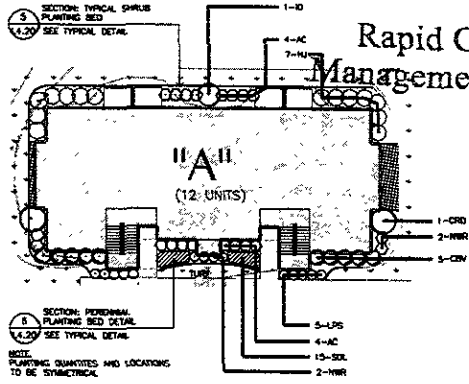
NO.	REVISION	DATE

Sub Sheet
L4.00
 Sheet 21 of

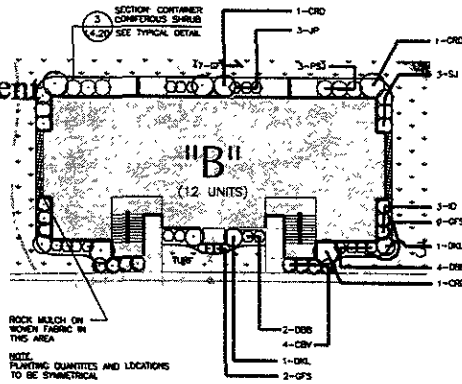
Copyright © 2005 Wyss Associates, Inc. All rights reserved. No part of this document may be reproduced without the prior written permission of the copyright owner.

OCT 14 2005

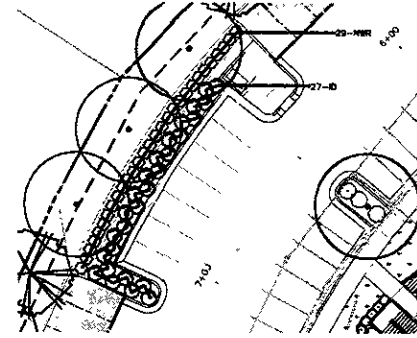
Rapid City Growth Management Department



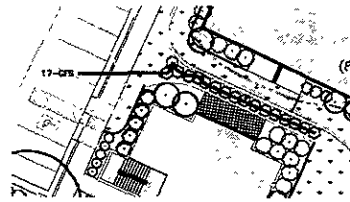
1 TYPICAL TYPE "A" ENLARGED PLANTING PLAN
SCALE: 1"=20'



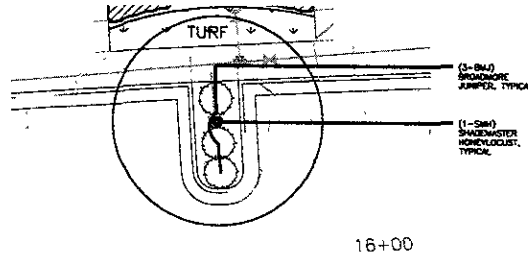
2 TYPICAL TYPE "B" ENLARGED PLANTING PLAN
SCALE: 1"=20'



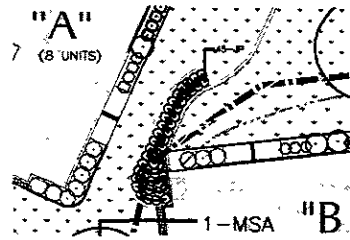
3 ENLARGED PLANTING PLAN
SCALE: 1"=20'



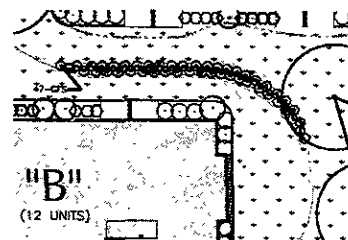
4 ENLARGED PLANTING PLAN
SCALE: 1"=20'



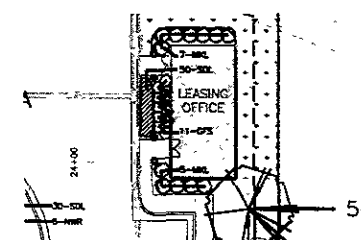
6 TYPICAL ISLAND PLANTING PLAN
SCALE: 1"=10'



5 ENLARGED PLANTING PLAN
SCALE: 1"=20'



7 ENLARGED PLANTING PLAN
SCALE: 1"=20'



8 ENLARGED PLANTING PLAN
SCALE: 1"=20'

Wyss Associates, Inc.
Landscape Architecture
Civil/Structural/Interior
Parks & Recreation Design
2001 N. 14th St., Suite 200
Rapid City, SD 57701-3870
Phone: 605.342.4268
Fax: 605.342.4268
Email: info@wyssassociates.com

Black Hills Estates
Eagle Ridge
Rapid City, South Dakota

Enlarged Planting Plans

DESIGNED BY	WSP	
DRAWN BY	K	
APPROVED BY	P	
PROJECT NO.	05L	
DATE	October 14, 2005	
NO.	REVISION	DATE

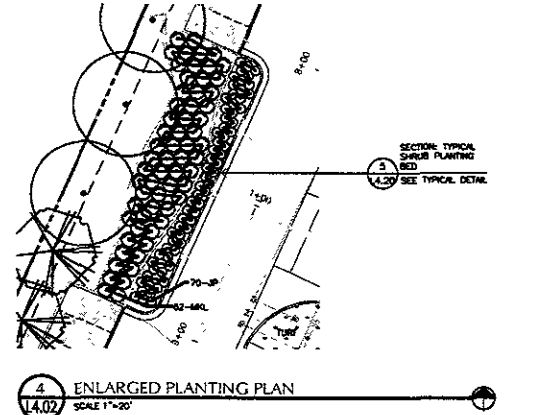
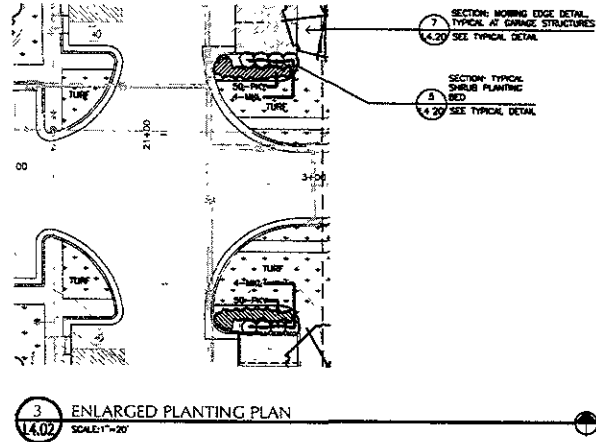
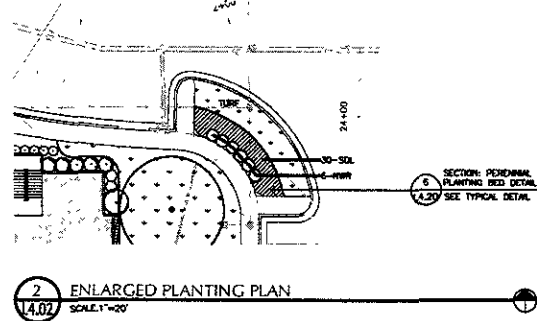
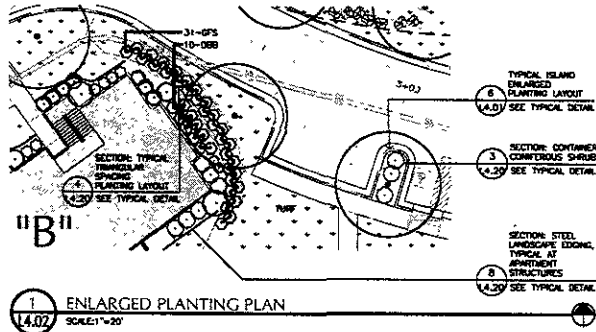
Sheet **L4.01**
22 OF

© 2005 Wyss Associates, Inc. All rights reserved. No part of this document may be reproduced without written permission of the author. All dimensions are in feet unless otherwise noted. All dimensions are to the center of the object unless otherwise noted. All dimensions are to the center of the object unless otherwise noted.

RECEIVED

OCT 14 2005

Rapid City Growth Management Department



PHASE I - SHRUB-PERENNIAL LIST

QTY	SYMBOL	COMMON NAME	BOTANICAL NAME	SIZE	COMMENTS
DECIDUOUS SHRUBS					
64	AC	ALPINE CURRANT	RIBES ALPINA	#2 CONTAINER	4'-0" O.C.
72	CBV	AMERICAN CRANBERRYBUSH VIBURNUM	VIBURNUM TRILOBUM 'DALEY COMPACT'	#2 CONTAINER	3'-6" O.C.
31	CRD	CARDINAL REDGOSER DOGWOOD	CORNUS SERICEA 'CARDINAL'	#5 CONTAINER	SPACE PER PLANS
72	DBB	DWARF BURPING BUSH	EUONYMUS ALATUS 'COMPACTUS'	#2 CONTAINER	4'-0" O.C.
16	DKL	DWARF KOREAN LILAC	SYRINGA MEYER 'PALIBY'	#2 CONTAINER	SPACE PER PLANS
37	GPS	GOLDFLAME SPIREA	SPHAEA X BURNALD 'GOLDFLAME'	#2 CONTAINER	SPACE PER PLANS
12	ID	ISHW DOGWOOD	CORNUS SERICEA 'SHAWT'	#2 CONTAINER	SPACE PER PLANS
0	JP	JACKMAN POTENTILLA	POTENTILLA FRUTICOSA 'LACKMANN'	#2 CONTAINER	3'-0" O.C.
40	LPS	LITTLE PRINCESS SPIREA	SPHAEA 'LITTLE PRINCESS'	#2 CONTAINER	4'-0" O.C.
70	MRL	MISS KIM LILAC	SYRINGA PATULA 'MISS KIM'	#5 CONTAINER	4'-0" O.C.
38	NWR	NEARLY WILD ROSE	ROSA 'NEARLY WILD'	#2 CONTAINER	3'-0" O.C.
CONIFEROUS SHRUBS					
15	BMJ	BROADMORE JUNIPER	JUNIPERUS SABINA 'BROADMORE'	#2 CONTAINER	4'-0" O.C.
56	HJ	HUGHES JUNIPER	JUNIPERUS HORIZONTALIS 'HUGHES'	#2 CONTAINER	4'-0" O.C.
48	SJ	PEPIN SAHNI JUNIPER	JUNIPERUS SABINA 'PEPIN'	#2 CONTAINER	4'-0" O.C.
PERENNIALS					
100	PRY	PAPERNA YARROW	ACHILLEA 'YARROW'	#2 CONTAINER	2'-0" O.C.
76	SDL	STELLA D'ORO DAYLILY	HEMEROCALLIS 'STELLA D'ORO'	#1 CONTAINER	1'-6" O.C.

PHASE II - SHRUB-PERENNIAL LIST

QTY	SYMBOL	COMMON NAME	BOTANICAL NAME	SIZE	COMMENTS
DECIDUOUS SHRUBS					
48	AC	ALPINE CURRANT	RIBES ALPINA	#2 CONTAINER	4'-0" O.C.
56	CBV	AMERICAN CRANBERRYBUSH VIBURNUM	VIBURNUM TRILOBUM 'DALEY COMPACT'	#2 CONTAINER	3'-6" O.C.
25	CRD	CARDINAL REDGOSER DOGWOOD	CORNUS SERICEA 'CARDINAL'	#5 CONTAINER	SPACE PER PLANS
68	DBB	DWARF BURPING BUSH	EUONYMUS ALATUS 'COMPACTUS'	#2 CONTAINER	4'-0" O.C.
12	DKL	DWARF KOREAN LILAC	SYRINGA MEYER 'PALIBY'	#2 CONTAINER	SPACE PER PLANS
109	GPS	GOLDFLAME SPIREA	SPHAEA X BURNALD 'GOLDFLAME'	#2 CONTAINER	3'-0" O.C.
51	ID	ISHW DOGWOOD	CORNUS SERICEA 'SHAWT'	#2 CONTAINER	SPACE PER PLANS
117	JP	JACKMAN POTENTILLA	POTENTILLA FRUTICOSA 'LACKMANN'	#2 CONTAINER	3'-0" O.C.
38	LPS	LITTLE PRINCESS SPIREA	SPHAEA 'LITTLE PRINCESS'	#2 CONTAINER	4'-0" O.C.
68	MRL	MISS KIM LILAC	SYRINGA PATULA 'MISS KIM'	#5 CONTAINER	4'-0" O.C.
30	NWR	NEARLY WILD ROSE	ROSA 'NEARLY WILD'	#2 CONTAINER	3'-0" O.C.
CONIFEROUS SHRUBS					
9	BMJ	BROADMORE JUNIPER	JUNIPERUS SABINA 'BROADMORE'	#2 CONTAINER	4'-0" O.C.
42	HJ	HUGHES JUNIPER	JUNIPERUS HORIZONTALIS 'HUGHES'	#2 CONTAINER	4'-0" O.C.
70	SJ	PEPIN SAHNI JUNIPER	JUNIPERUS SABINA 'PEPIN'	#2 CONTAINER	4'-0" O.C.
PERENNIALS					
97	SDL	STELLA D'ORO DAYLILY	HEMEROCALLIS 'STELLA D'ORO'	#1 CONTAINER	1'-6" O.C.

Wys Associates, Inc.
Landscape Architecture
Civil/Contract Architecture
Parks & Recreation Design
288 South Street - Rapid City, South Dakota 57701-3070
Ph: 605.348.2288 - Fax: 605.348.8508
www.wysassociates.com

Black Hills Estates
Eagle Ridge
Rapid City, South Dakota

Enlarged Planting Plans
Shrubs-Perennials

DESIGNED BY: WSP
DRAWN BY: A
APPROVED BY: P
PROJECT NO.: 035
DATE: October 14, 2005

NO. REVISION D/E

Sheet 23 of 29

© 2005 by WSP Associates, Inc. All rights reserved. This drawing is the property of the originator. No part of this drawing may be reproduced without the written permission of the originator.