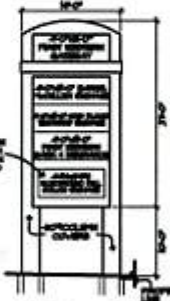
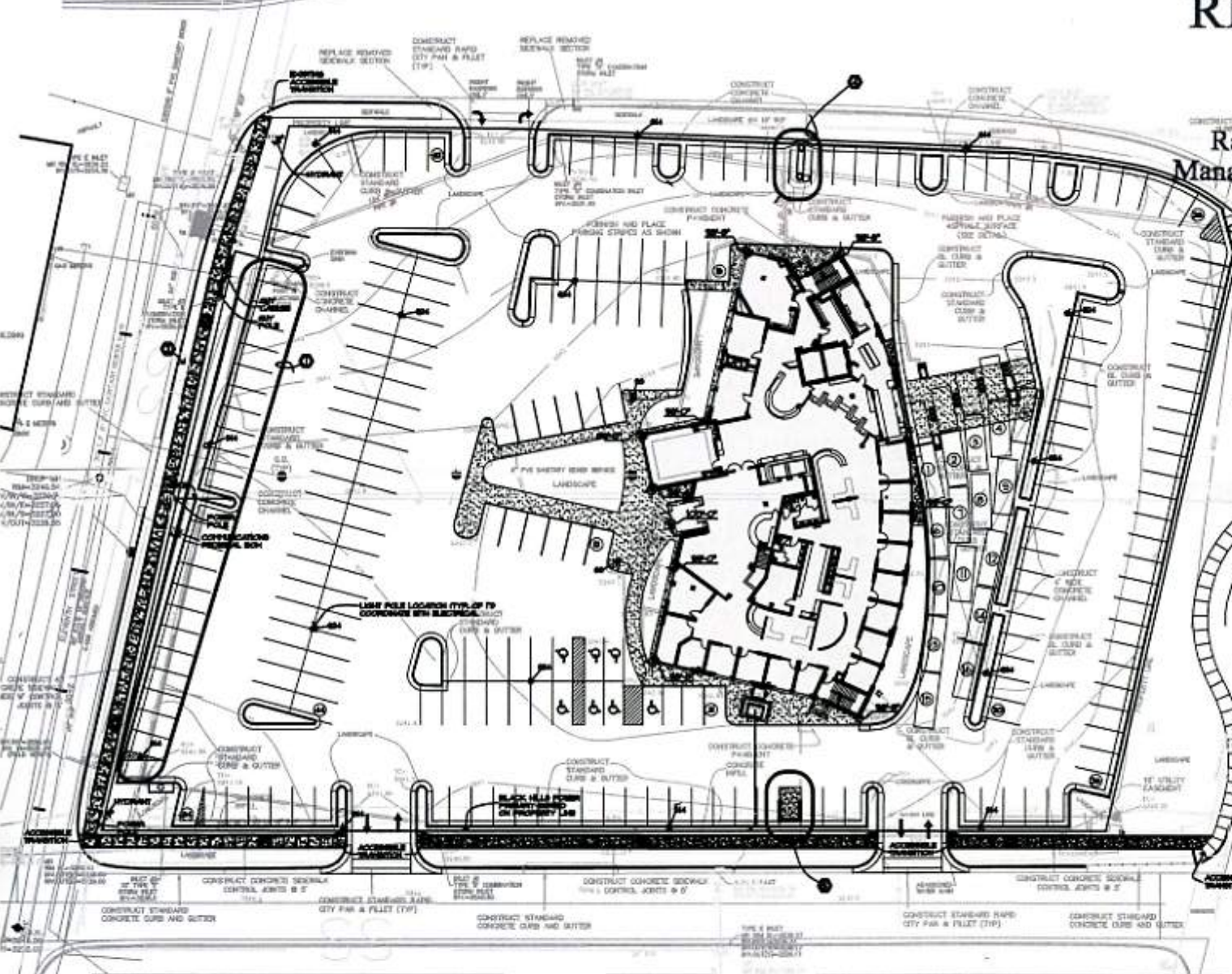


RECEIVED

OCT 20 2005

Rapid City Growth Management Department



2 SIGN ELEVATION NOT TO SCALE

GENERAL NOTES:

THE PARKING LOT LANDSCAPE HAS BEEN REDESIGNED TO TAKE ADVANTAGE OF THE ADDITIONAL PROPERTY ADDED FROM THE REDESIGNED PARKING LOT LANDSCAPE. ALL CONSTRUCTION SHALL BE IN ACCORDANCE WITH THE CITY OF RAPID CITY ZONING ORDINANCES AND RESOLUTIONS.

THE TOTAL NUMBER OF PARKING SPACES HAS BEEN INCREASED FROM THE 20 SPACE PLAN TO 30 SPACES.

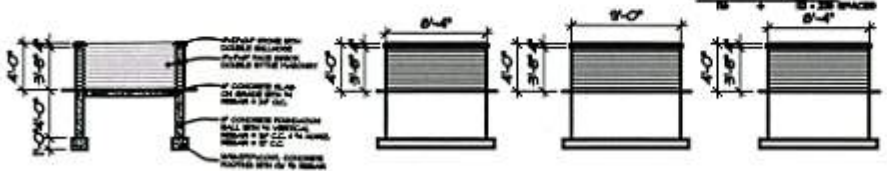
LANDSCAPE PLANTING IN THE COURTYARD AND ALONG THE SIDEWALKS SHALL BE IN ACCORDANCE WITH THE CITY OF RAPID CITY ZONING ORDINANCES AND RESOLUTIONS.

SEE LISTING REQUIREMENTS AND CHECK HAVE NOT CHANGED.

PUBLIC SIDEWALK CHANGES ARE REQUIRED PER TO VARIOUS CODES AND CITY UTILITY DEPARTMENTS.

- BASELINES TO BE USED:**
1. PARALLEL TO CURB, CENTER AND PARKING ARE INDICATED BY DASHES AND DIMENSIONED TO THE CURB.
 2. 8'0" SIDEWALK ADJACENT TO STREET CURB AND 8'0" SIDEWALK ADJACENT TO PARKING ARE INDICATED BY DASHES AND DIMENSIONED TO THE CURB.
 3. 8'0" SIDEWALK ADJACENT TO STREET CURB AND 8'0" SIDEWALK ADJACENT TO PARKING ARE INDICATED BY DASHES AND DIMENSIONED TO THE CURB.
 4. 8'0" SIDEWALK ADJACENT TO STREET CURB AND 8'0" SIDEWALK ADJACENT TO PARKING ARE INDICATED BY DASHES AND DIMENSIONED TO THE CURB.
 5. 8'0" SIDEWALK ADJACENT TO STREET CURB AND 8'0" SIDEWALK ADJACENT TO PARKING ARE INDICATED BY DASHES AND DIMENSIONED TO THE CURB.
 6. 8'0" SIDEWALK ADJACENT TO STREET CURB AND 8'0" SIDEWALK ADJACENT TO PARKING ARE INDICATED BY DASHES AND DIMENSIONED TO THE CURB.

1 SITE LAYOUT PLAN NOT TO SCALE



ARC International inc
www.ARC-INTL.COM
1025 West, Brown, Suite 201
Rapid City, South Dakota 57705
Tel: 605.341.2000 Fax: 605.341.2001

First Western Gateway
Rapid City, South Dakota

DATE: 10/19/05
TIME: 10:19 AM
USER: JCM
JOB: 2003-008

AC19-1