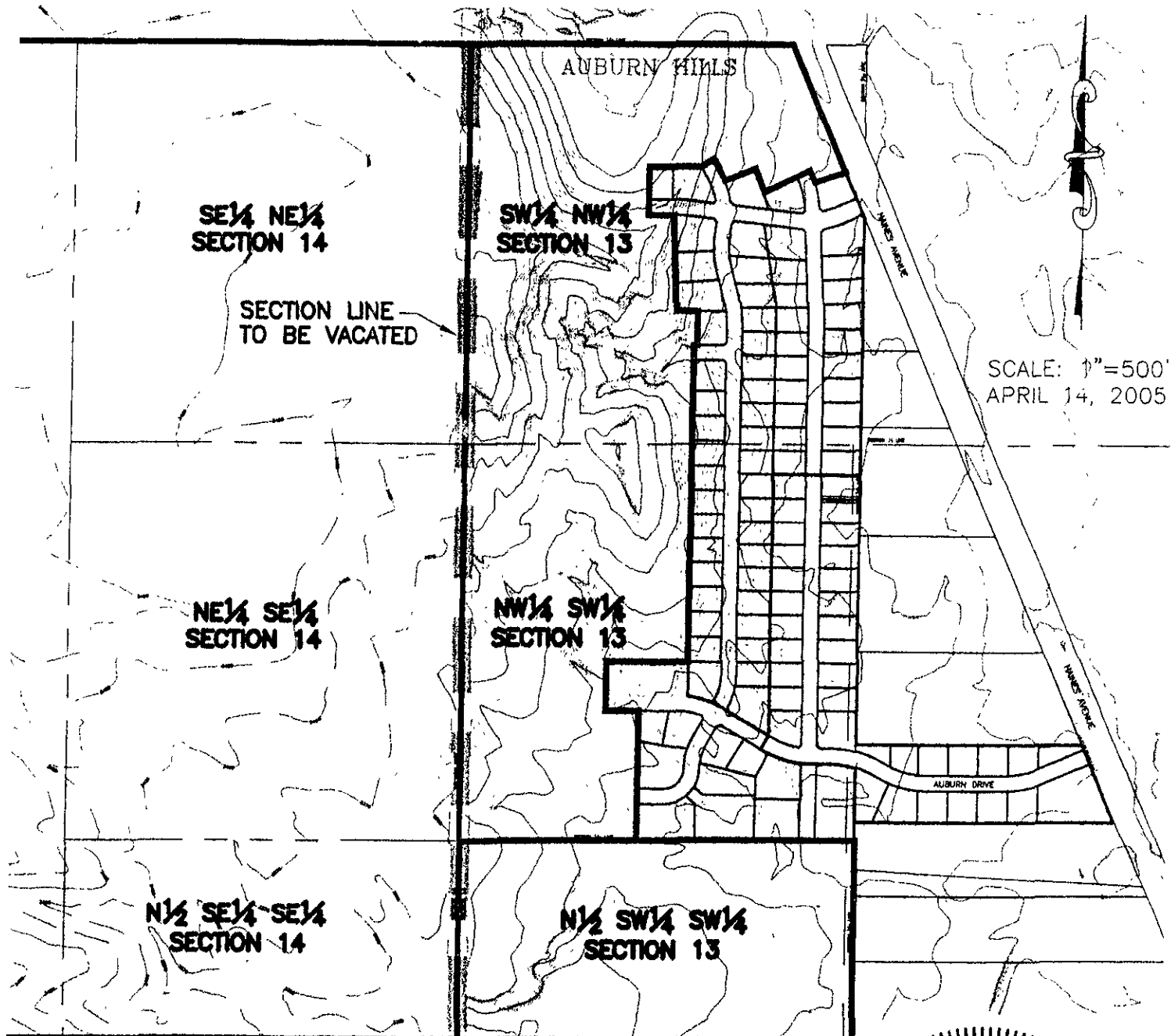


EXHIBIT "A"

AREA OF VACATION

LOCATED IN SECTION 13 AND SECTION 14, T2N, R7E, BHM
RAPID CITY, PENNINGTON COUNTY, SOUTH DAKOTA



SCALE: 1"=500'
APRIL 14, 2005

SE¹/₄ NE¹/₄
SECTION 14

SW¹/₄ NW¹/₄
SECTION 13

SECTION LINE
TO BE VACATED

NE¹/₄ SE¹/₄
SECTION 14

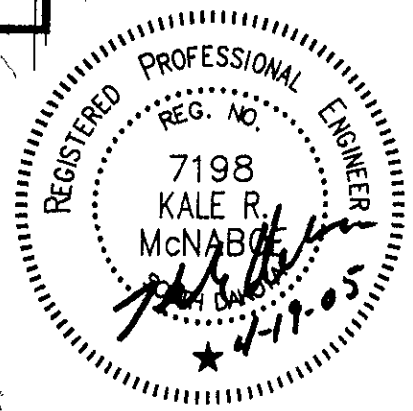
NW¹/₄ SW¹/₄
SECTION 13

N¹/₂ SE¹/₄ SE¹/₄
SECTION 14

N¹/₂ SW¹/₄ SW¹/₄
SECTION 13

66' WIDE SECTION
LINE RIGHT OF WAY

RECEIVED



Rapid City Growth
Management Department

C:\DRAWINGS\18511851.06\TOPOX.dwg, EXH-A, 4/19/2005 8:27:34 AM