

EXHIBIT A

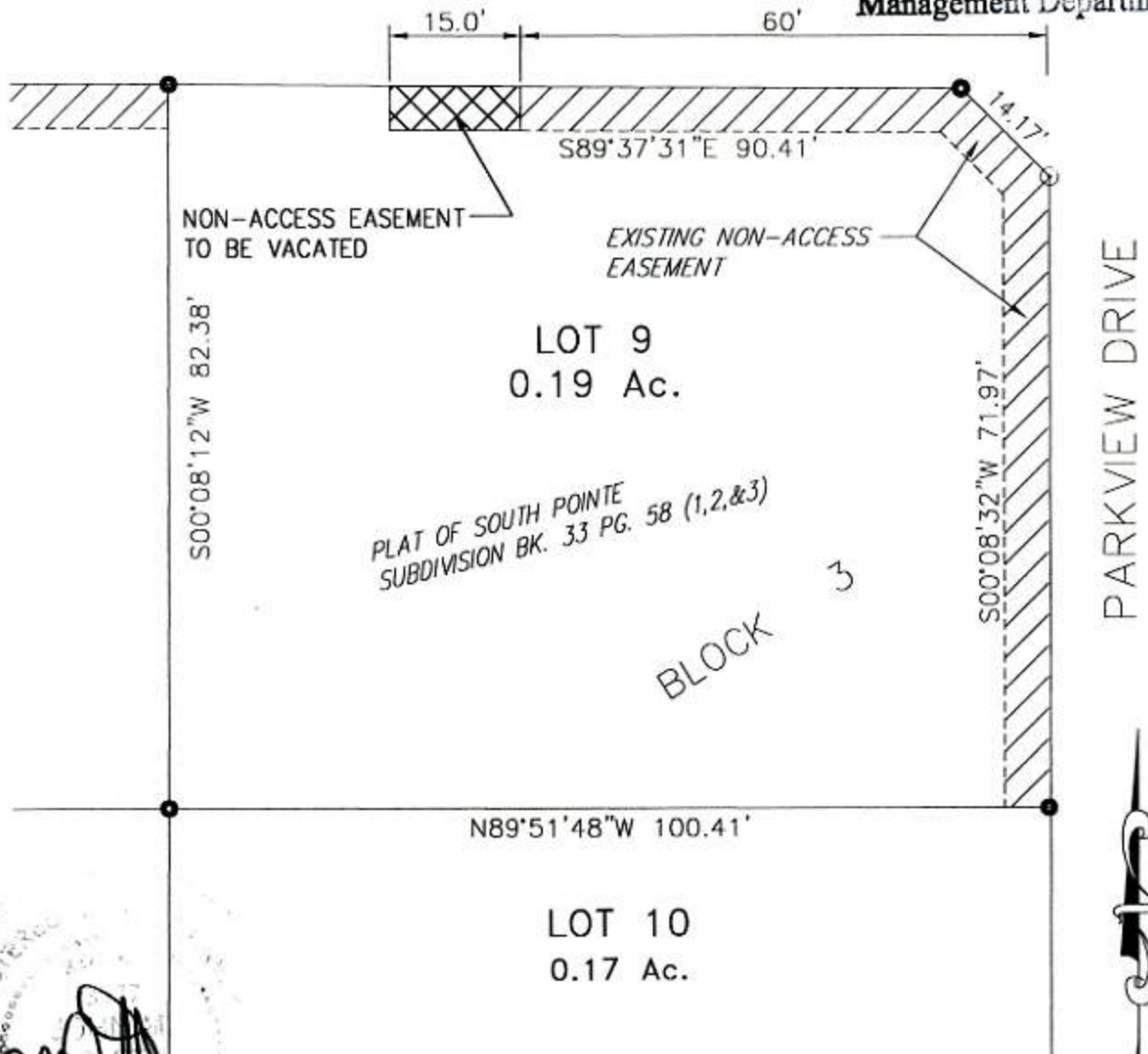
NON-ACCESS EASEMENT VACATION OF
LOT 9, BLOCK 3 SOUTH POINTE SUBDIVISION
LOCATED IN THE E1/2 NE1/4, SECTION 24, T1N, R7E, B.H.M.,
CITY OF RAPID CITY, PENNINGTON COUNTY, SOUTH DAKOTA

RECEIVED

SEP 30 2005

ENCHANTED PINES DRIVE

Rapid City Growth
Management Department



SCALE: 1" = 20'

	PREPARED BY: ARLETH & ASSOCIATES	25 KIRK ROAD DEADWOOD, SD 57732 605-578-1637	JOB NO. 04-0059.1	DATE: 09/28/05 SCALE: 1" = 20' DRAWN:	APPROVED: JMA DWG: plat62105.dwg	PREPARED FOR: DREAM DESIGN INTERNATIONAL, INC. 528 KANSAS CITY STREET, SUITE 4 RAPID CITY, SD 57701 (605) 348-0538
--	---	--	-----------------------------	--	--	--