

# EXHIBIT A

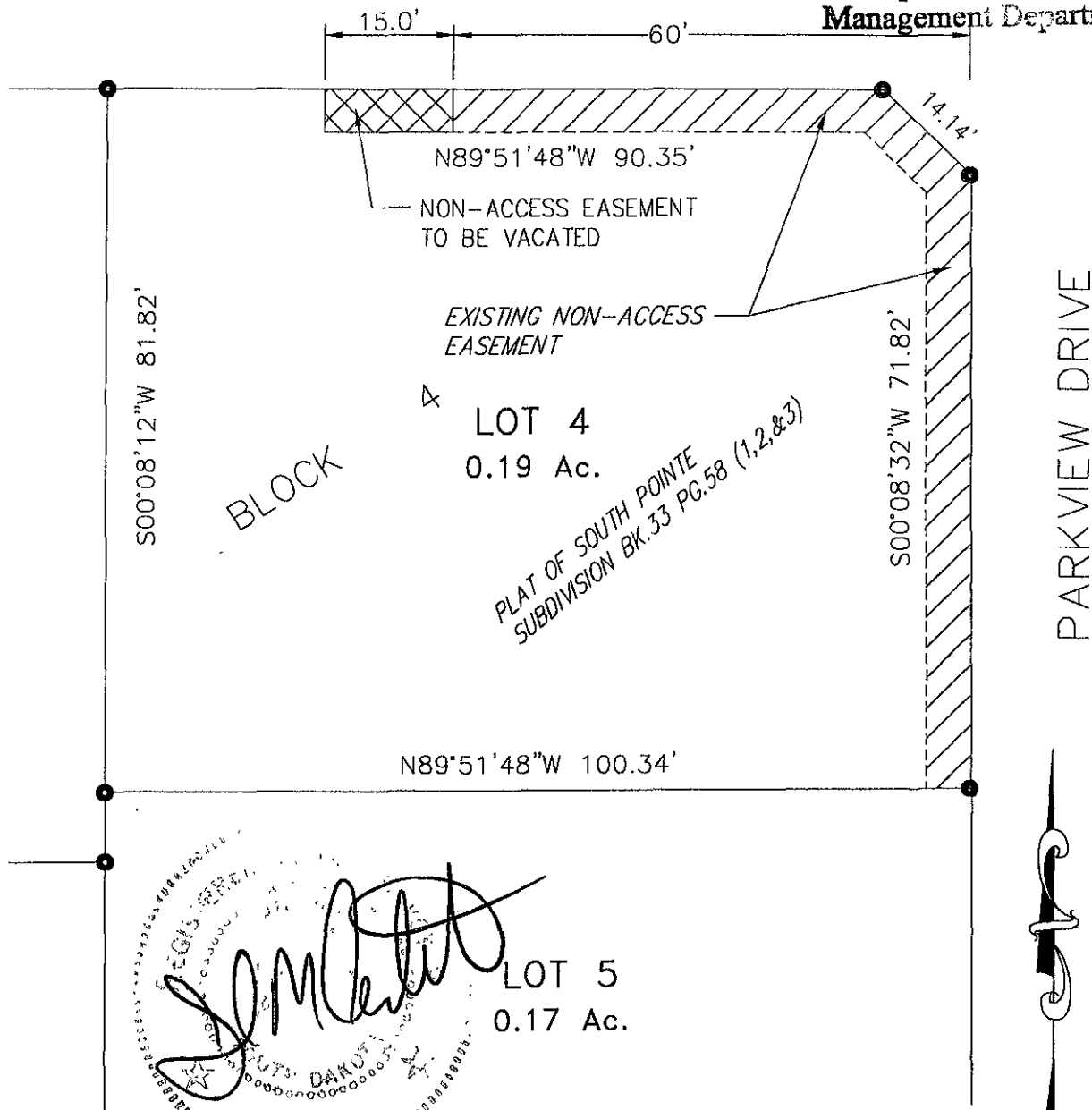
NON-ACCESS EASEMENT VACATION OF  
LOT 4, BLOCK 4 SOUTH POINTE SUBDIVISION  
LOCATED IN THE E1/2 NE1/4, SECTION 24, T1N, R7E, B.H.M.,  
CITY OF RAPID CITY, PENNINGTON COUNTY, SOUTH DAKOTA

## RECEIVED

SEP 30 2005

### SANDRA LANE

Rapid City Growth  
Management Department



BLOCK 4

LOT 4  
0.19 Ac.

PLAT OF SOUTH POINTE  
SUBDIVISION BK.33 PG.58 (1,2,&3)

LOT 5  
0.17 Ac.

PARKVIEW DRIVE



SCALE: 1" = 20'

PREPARED BY:  
ARLETH &  
ASSOCIATES

25 KIRK ROAD  
DEADWOOD, SD 57732  
605-578-1837

JOB NO.  
04-0059.1

DATE: 09/28/05  
SCALE: 1" = 20'  
DRAWN:

APPROVED: JMA  
DWC: plat62105.dwg

PREPARED FOR:  
DREAM DESIGN INTERNATIONAL, INC.  
328 KANSAS CITY STREET, SUITE 4  
RAPID CITY, SD 57701  
(605) 348-0538

