

Plat of Lots 1 & 2 of Flessner Subdivision
 formerly all of the Balance of Tract A and Lot 1 of Tract A
 located in the NE1/4 SE 1/4 of Section 12, T1N, R6E, B.H.M.
 Pennington County, South Dakota

05SV070

Prepared by:
 Risk Land Surveying & Consulting Engineers, Inc.
 P.O. Box 8154
 Rapid City, SD 57709
 (605) 348-1538
 Project # 05-09-02



1" = 100'

0 100 200

September 29, 2005

8' Utility and Minor Drainage Easements
 on the interior sides of all lot lines

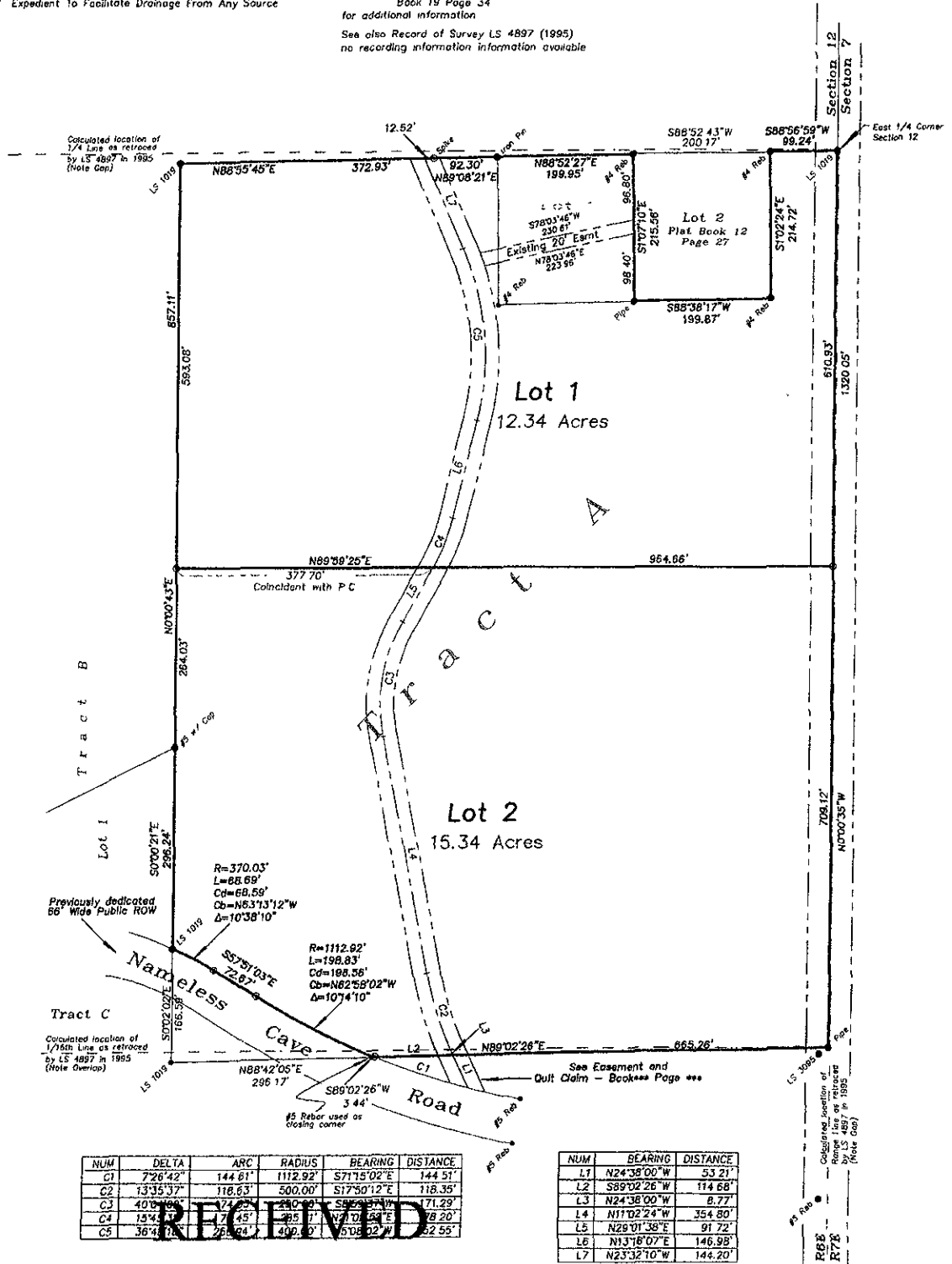
LEGEND AND NOTES

- Denotes Found Survey Monument As Noted
- ⊙ Denotes Set Survey Monument Marked "LS 6565"
- ⊖ Bases Of Bearings = Solar Observation

Annotations shown are those measured this survey.
 See plots Book 11 Page 77
 Book 12 Page 27
 Book 19 Page 34
 for additional information

See also Record of Survey LS 4897 (1995)
 no recording information information available

All Major Drainage Easements Shown Hereon
 Shall Be Keep Free Of All Obstructions, Including
 But Not Limited To Buildings, Walls, Fences,
 Hedges, Trees And Shrubs. These Easements
 Grant To All Public Authorities The Right To
 Construct, Operate, Maintain, Inspect, And Repair
 Such Improvements And Structures As It Deems
 Expedient To Facilitate Drainage From Any Source



NUM	DELTA	ARC	RADIUS	BEARING	DISTANCE
C1	7°26'42"	144.61'	1112.92'	S71°5'02"E	144.51'
C2	13°35'37"	118.63'	500.00'	S17°50'12"E	118.35'
C3	40°0'00"	72.00'	240.00'	S89°59'57"W	171.29'
C4	15°4'11"	7.45'	29.5'	N71°0'54"E	78.20'
C5	36°4'18"	26.64'	400.00'	S108°02'28"W	52.55'

NUM	BEARING	DISTANCE
L1	N24°38'00"W	53.21'
L2	S89°02'26"W	114.68'
L3	N24°38'00"W	8.77'
L4	N11°02'24"W	354.80'
L5	N29°01'38"E	91.72'
L6	N13°16'07"E	146.98'
L7	N23°32'10"W	144.20'

SEP 30 2005

Rapid City Growth
 Management Department