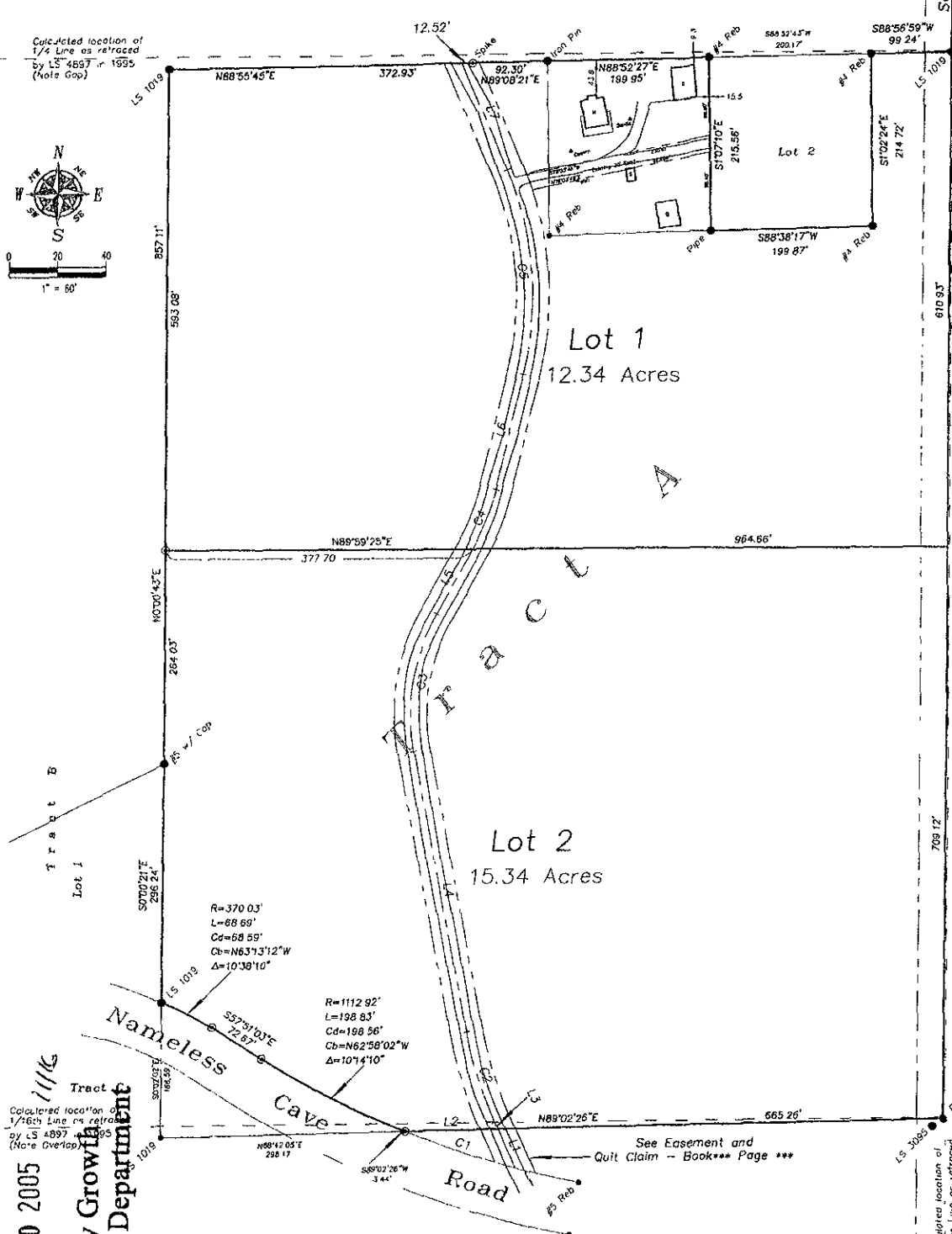


Calculated location of
1/4 Line as retraced
by LS 4857 in 1995
(Note Gap)



East 1/4 Corner
Section 12

Section 12
Section 7



SEP 30 2005
RAPID CITY
City Growth
Management Department

Calculated location of
1/4 Line as retraced
by LS 4897 in 1995
(Note Overlap)

NUM	DELTA	ARC	RADIUS	BEARING	DISTANCE
L1	1°26'42"	144.61'	1112.92'	S71°15'02"E	144.51'
L2	1°35'37"	118.63'	500.00'	S17°50'12"E	118.35'
L3	0°04'02"	174.83'	250.00'	S8°59'37"W	171.29'
L4	0°45'32"	78.45'	285.21'	N21°08'52"E	78.20'
L5	5°48'16"	256.94'	400.00'	N5°08'02"W	252.55'

NUM	BEARING	DISTANCE
L1	N24°38'00"W	53.21'
L2	S89°02'26"W	114.68'
L3	N24°38'00"W	8.77'
L4	N11°02'24"W	354.80'
L5	N29°01'38"E	91.72'
L6	N13°16'07"E	146.98'
L7	N23°32'10"W	144.20'

Calculated location of
Range Line as retraced
by LS 4897 in 1995
(Note Gap)

RECEIVED

Fisk Land Surveying
& Consulting
Engineers, Inc.

Boundary Survey & Site Plan
Proposed Lots 1 & 2 of Flessner Subdivision
formerly the Balance of Tract A and Lot 1 of Tract A
located in the NE1/4 SE 1/4 of Section *12, T1N, R6E, B.H.M.
Pennington County, South Dakota

Project No.	05-182
Date	8/26/05
Drawn by	J.R.W.
Checked by	J.R.W.
Scale	1" = 60'