

**Plat of Lots 1 & 2 of Flessner Subdivision**  
 formerly all of the Balance of Tract A and Lot 1 of Tract A  
 located in the NE1/4 SE 1/4 of Section 12, T1N, R6E, B.H.M.  
 Pennington County, South Dakota

05PL182

Prepared by:  
 Triak Land Surveying & Consulting Engineers, Inc.  
 P.O. Box 8154  
 Rapid City, SD 57700  
 (605) 348-1838  
 Project # 05-09-02



1" = 100'

0 100 200

September 29, 2005

B' Utility and Minor Drainage Easements  
 on the interior sides of all lot lines

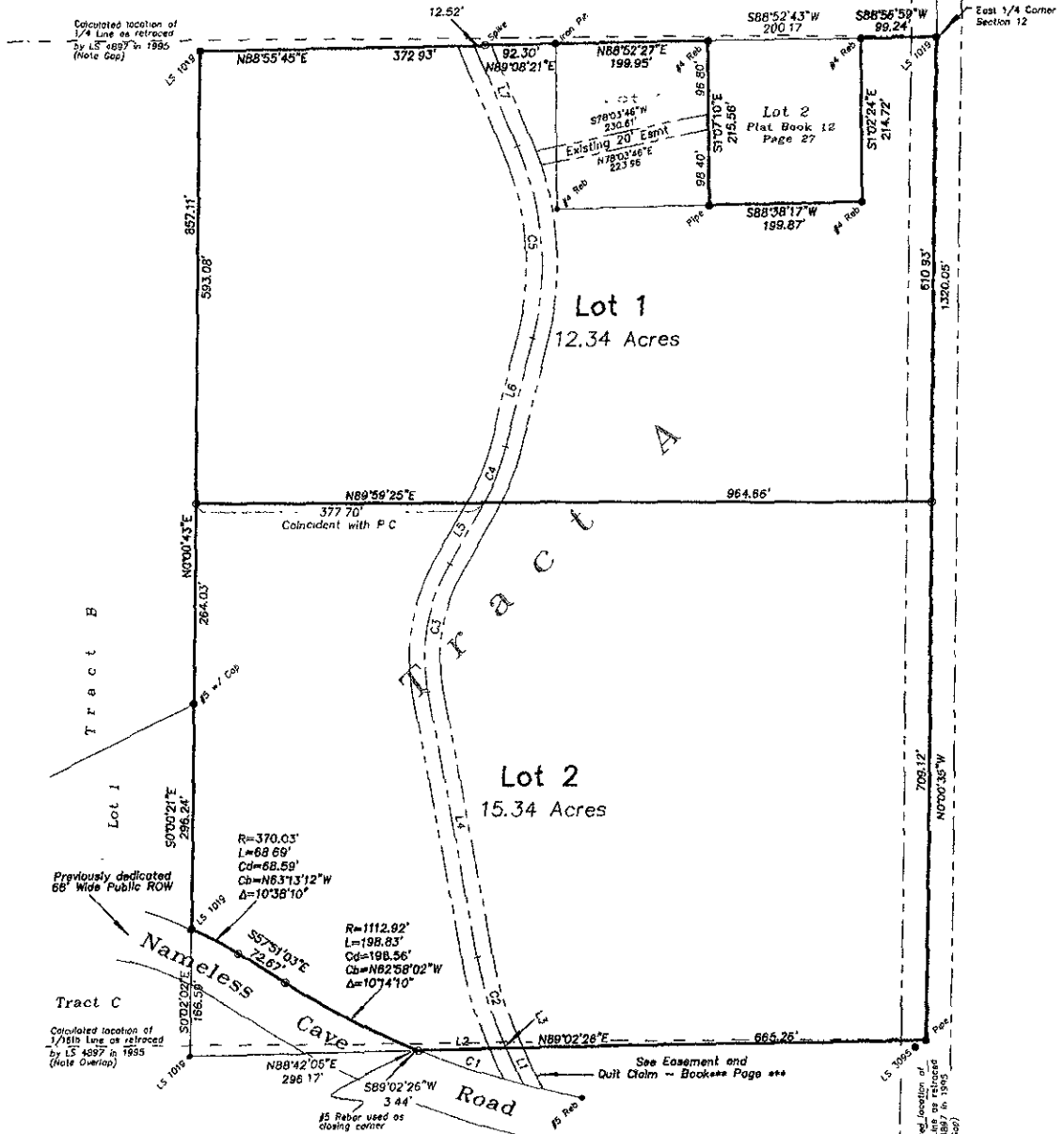
All Major Drainage Easements Shown Hereon  
 Shall Be Kept Free Of All Obstructions, Including  
 But Not Limited To Buildings, Walls, Fences,  
 Hedges, Trees And Shrubs. These Easements  
 Grant To All Public Authorities The Right To  
 Construct, Operate, Maintain, Inspect, And Repair  
 Such Improvements And Structures As It Deems  
 Expedient To Facilitate Drainage From Any Source

**LEGEND and NOTES**

- Denotes Found Survey Monument As Noted
  - ⊙ Denotes Set Survey Monument Marked "LS 6565"
- Basis Of Bearings = Solar Observation

Annotations shown are those measured this survey.  
 See plats Book 11 Page 77  
 Book 12 Page 27  
 Book 19 Page 34  
 for additional information

See also Record of Survey LS 4897 (1995)  
 no recording information information available



Calculated location of  
 1/4 Line as retraced  
 by LS 4897 in 1995  
 (Note Gap)

Calculated location of  
 Range Line as retraced  
 by LS 4897 in 1995  
 (Note Gap)

$R=370.03'$   
 $L=68.69'$   
 $Cd=68.59'$   
 $Cb=N63.13'12"W$   
 $\Delta=10'38"10"$

$R=1112.92'$   
 $L=198.83'$   
 $Cd=198.56'$   
 $Cb=N82'58"02"W$   
 $\Delta=10'74"10"$

Calculated location of  
 1/16th Line as retraced  
 by LS 4897 in 1995  
 (Note Overlap)

See Easement and  
 Quit Claim -- Book# Page #

**RECEIVED**

NUM	DELTA	ARC	RADIUS	BEARING	DISTANCE
C1	726.42'	144.61'	1112.92'	S71°15'02"E	144.51'
C2	1333.37'	118.63'	500.00'	S17°50'12"E	118.35'
C3	400.00'	174.63'	250.00'	S8°58'37"W	171.29'
B	15.34	78.4	285.21'	N21°08'52"E	78.20'
C5	163.878'	235.5	400.00'	N5°08'02"W	252.55'

NUM	BEARING	DISTANCE
L1	N24°38'00"W	53.21'
L2	S89°02'26"W	114.68'
L3	N24°38'00"W	8.77'
L4	N11°02'24"W	354.80'
L5	N28°01'38"E	91.72'
L6	N13°16'07"E	146.98'
L7	N23°32'10"W	144.20'

SEP 30 2005

Rapid City Growth  
 Management Department

1116 AM