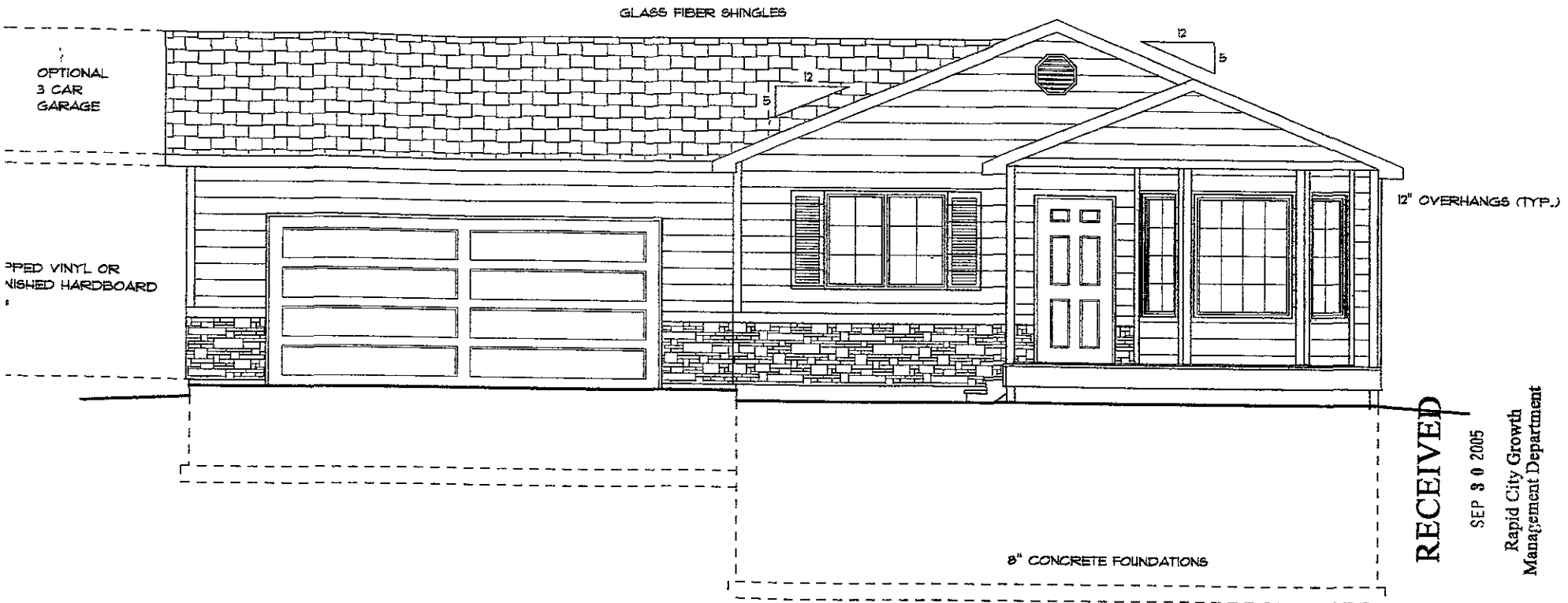


ELEVATION NOTES:

- 1. SEE SECTION SHEET 5 FOR MATERIAL INFORMATION & VERTICAL DIMENSIONS
- 2. ALL GRADE AT BUILDING EDGE IS TENTATIVE AND MAY VARY BASED ON ACTUAL SITE TOPOGRAPHY



RECEIVED

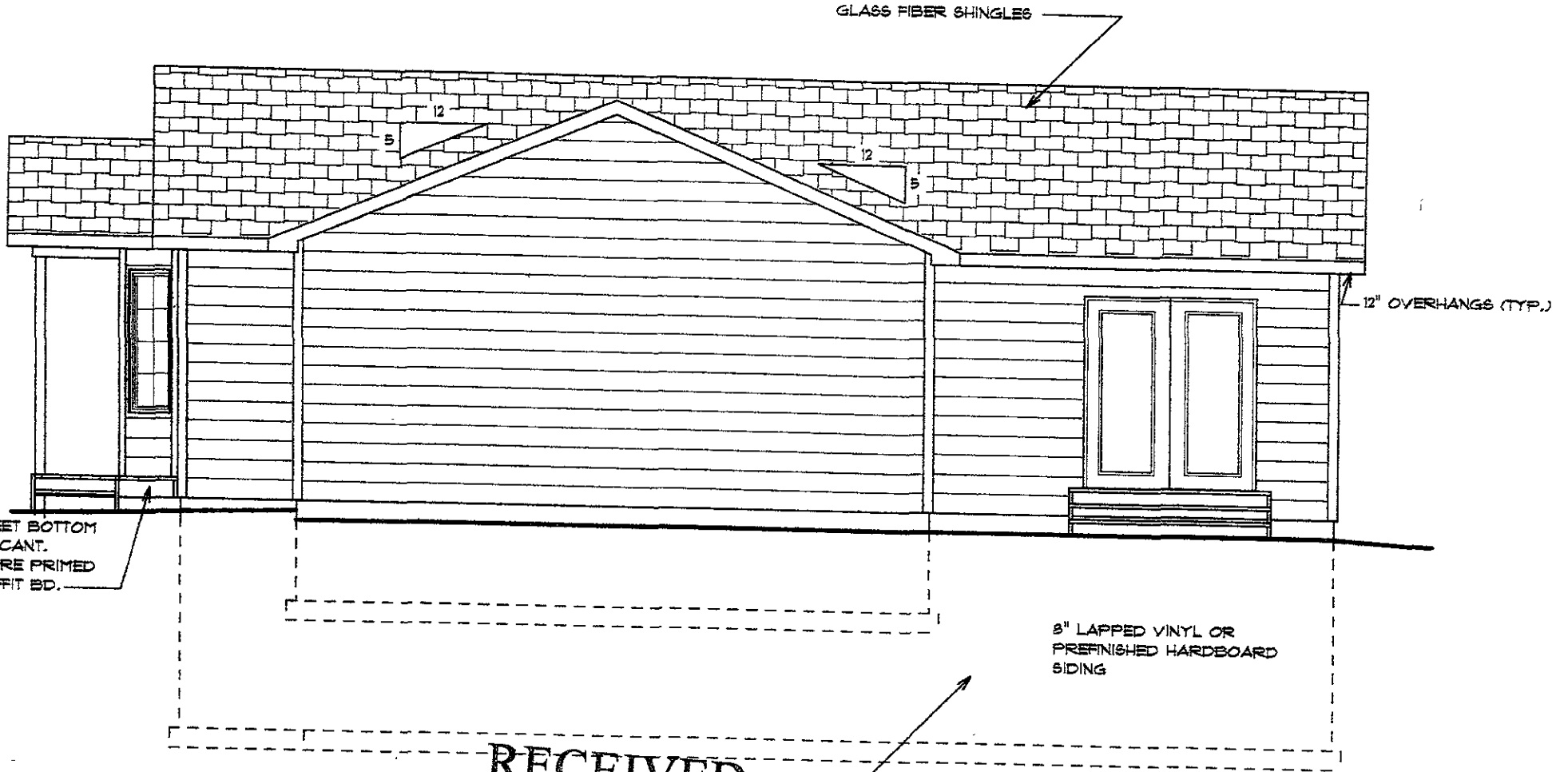
SEP 30 2005

Rapid City Growth
Management Department

REAR ELEVATION

SCALE: 3/16" = 1'-0"

GLASS FIBER SHINGLES



SHEET BOTTOM OF CANT. W/PRE PRIMED SOFFIT BD.

12" OVERHANGS (TYP.)

8" LAPPED VINYL OR PREFINISHED HARDBOARD SIDING

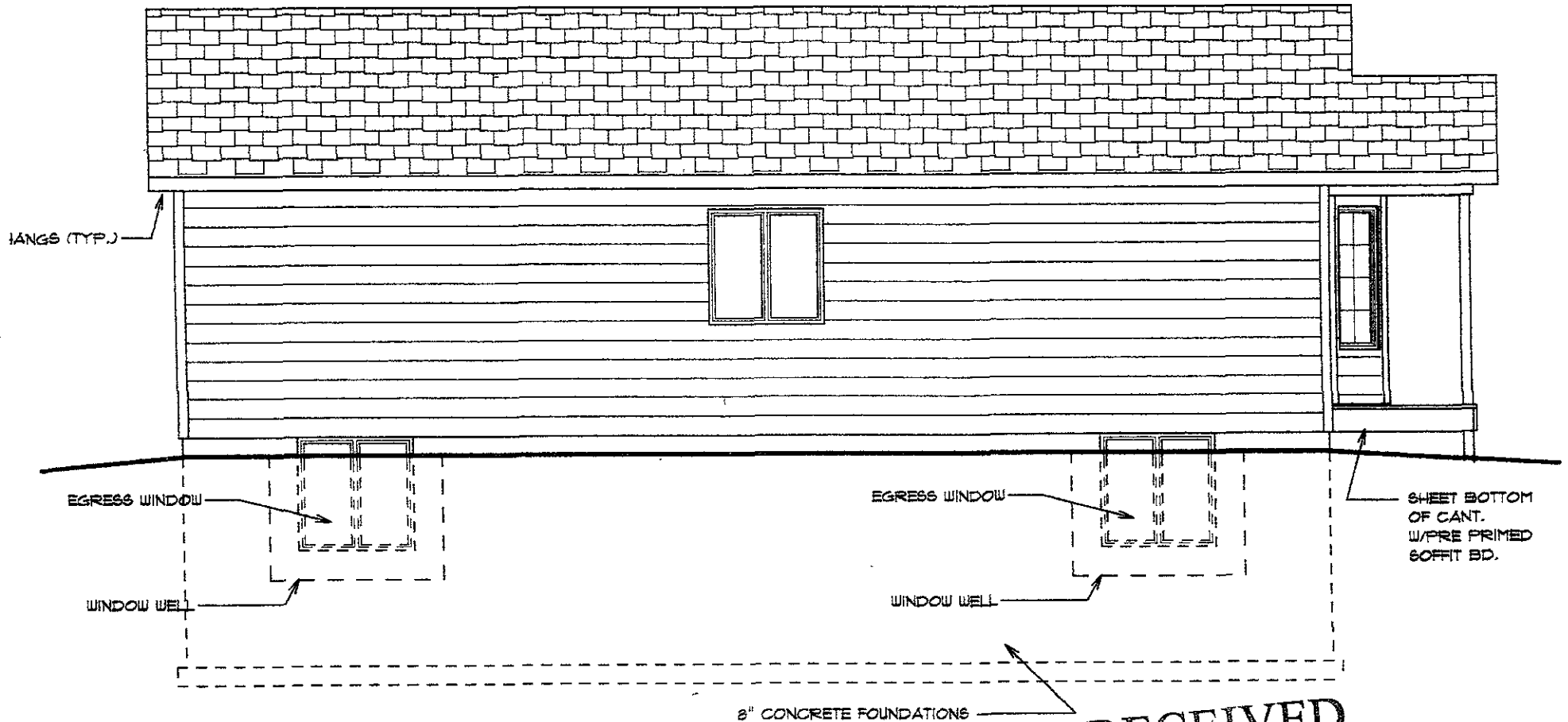
8" CONCRETE FOUNDATIONS

RECEIVED
LEFT ELEVATION

SCALE: 3/16" = 1'-0"

SEP 30 2005

Rapid City Growth
Management Department



RIGHT ELEVATION

SCALE: 3/16" = 1'-0"

RECEIVED

SEP 30 2005

Rapid City Growth
Management Department

ELEVATION NOTES:

1. SEE SECTION SHEET 5 FOR MATERIAL INFORMATION & VERTICAL DIMENSIONS

RIGHT ELEVATION

SCALE: 3/16" = 1'-0"

GLASS FIBER SHINGLES

5 12

12 5

VINYL OR
D HARDBOARD

EGRESS WINDOW

WINDOW WELL

REAR ELEVATION

SCALE: 3/16" = 1'-0"

RECEIVED

SEP 30 2005

Rapid City Growth
Management Department

1002 S. D.

