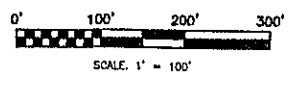


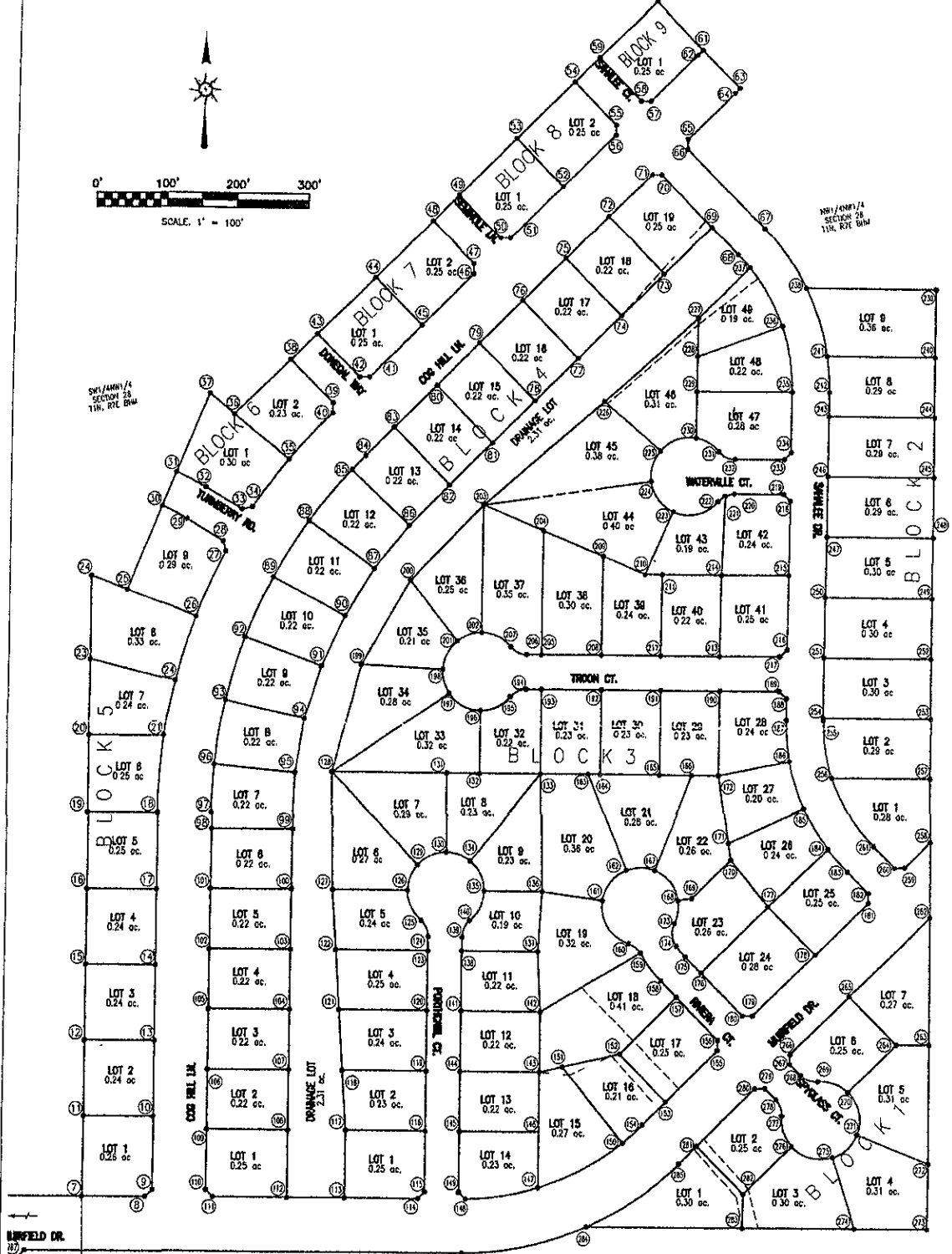
# PLAT OF REDWOOD MEADOWS SUBDIVISION

LOTS 1-7, BLOCK 1; LOTS 1-9, BLOCK 2; LOTS 1-49, BLOCK 3; LOTS 1-19, BLOCK 4; LOTS 1-9, BLOCK 5; LOTS 1-2, BLOCK 6; LOTS 1-2, BLOCK 7; LOTS 1-2, BLOCK 8; LOT 1, BLOCK 9; DEDICATED STREETS AND DRAINAGE LOT LOCATED IN THE NW1 NW1, SW1 NW1, NW1 SW1 AND SW1 SW1 OF SECTION 28, T1N, R7E, B.H.M. AND THE SE1 NE1, NE1 SE1 AND A PORTION OF LOT 2 LOCATED IN THE SE1 SE1 OF SECTION 29, T1N, R7E, B.H.M., CITY OF RAPID CITY, PENNINGTON COUNTY, SOUTH DAKOTA



NW1/4 NW1/4 SECTION 28 11N, R7E B.H.M.

SW1/4 NW1/4 SECTION 28 11N, R7E B.H.M.



### LEGEND

- DENOTES SET 5/8" REBAR WITH SURVEY CAP MARKED "RL53977"
- DENOTES FOUND SURVEY MONUMENT

### NOTES:

- MINOR DRAINAGE AND UTILITY EASEMENTS ARE HEREBY ESTABLISHED 8' WIDE ON THE INTERIOR SIDE OF ALL LOT LINES AND RIGHT-OF-WAY (EXCEPT WHERE MAJOR DRAINAGE EASEMENTS ARE LOCATED)
- TOTAL PLATTED ACR: 40.70 ACRES, LOTS: 28.20 ACRES; DEDICATED PUBLIC RIGHT-OF-WAY: 12.50 ACRES
- ANY MAJOR DRAINAGE EASEMENTS SHOWN HEREON SHALL BE KEPT FREE OF ALL OBSTRUCTIONS INCLUDING BUT NOT LIMITED TO BUILDINGS, WALLS, FENCES, HEDGES, TREES, AND SHRUBS. THESE EASEMENTS GRANT TO ALL PUBLIC AUTHORITIES THE RIGHT TO CONSTRUCT, OPERATE, MAINTAIN, INSPECT AND REPAIR SUCH IMPROVEMENTS AND STRUCTURES AS IT DEEMS EXPEDIENT TO FACILITATE DRAINAGE FROM ANY SOURCE.
- NON-ACCESS EASEMENTS ARE HEREBY ESTABLISHED ALONG THE FIRST FIFTY FEET OF CORNER LOTS OR AS INDICATED HEREON