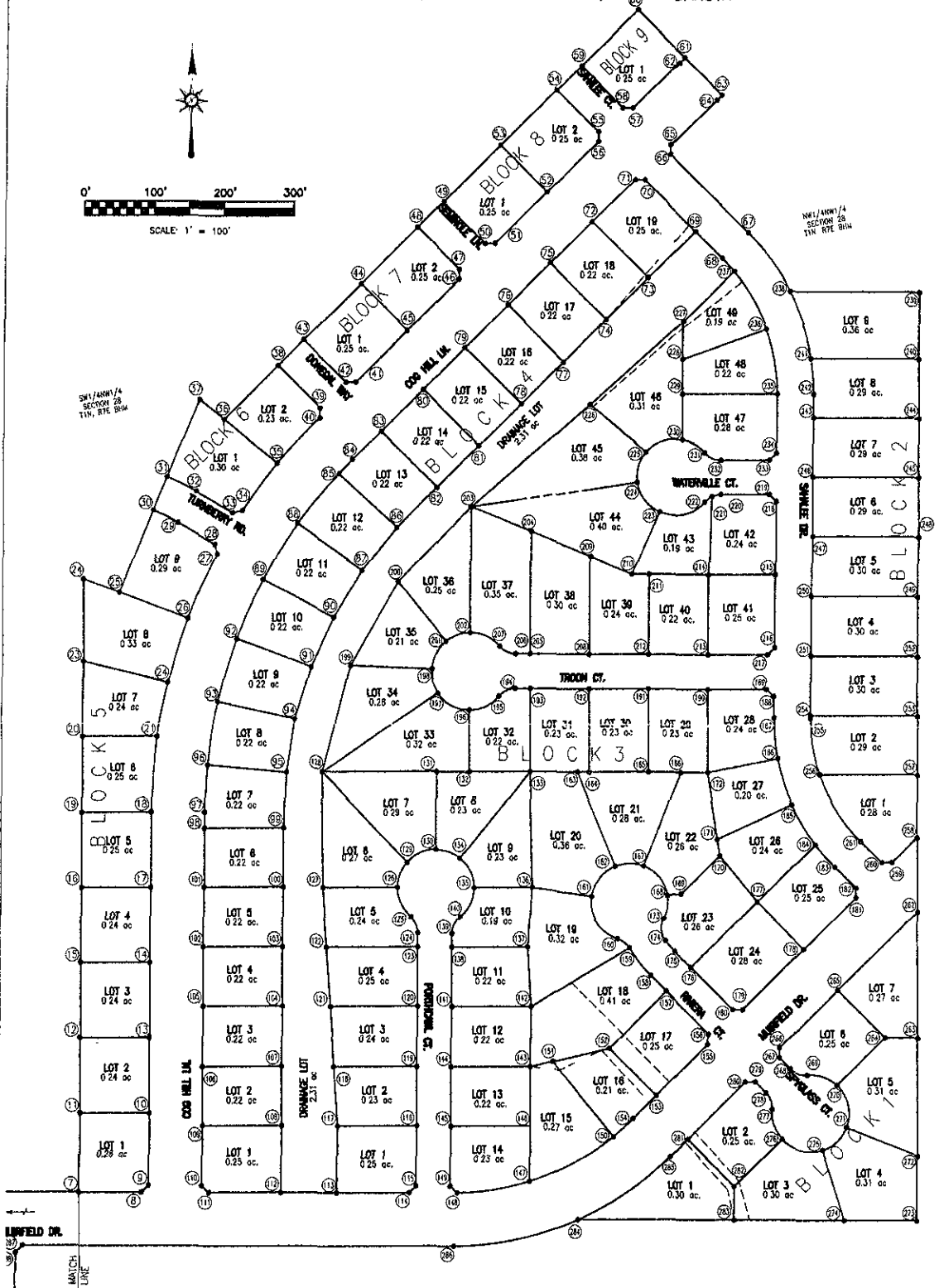
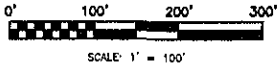


LOTS 1-7, BLOCK 1; LOTS 1-9, BLOCK 2; LOTS 1-49, BLOCK 3; LOTS 1-19, BLOCK 4; LOTS 1-9, BLOCK 5; LOTS 1-2, BLOCK 6; LOTS 1-2, BLOCK 7; LOTS 1-2, BLOCK 8; LOT 1, BLOCK 9; DEDICATED STREETS AND DRAINAGE LOT LOCATED IN THE NW1 NW1, SW1 NW1, NW1 SW1 AND SW1 SW1 OF SECTION 28, T1N, R7E, B.H.M., AND THE SE1 NE1, NE1 SE1 AND A PORTION OF LOT 2 LOCATED IN THE SE1 SE1 OF SECTION 29, T1N, R7E, B.H.M., CITY OF RAPID CITY, PENNINGTON COUNTY, SOUTH DAKOTA

**LEGEND**

- DENOTES SET 5/8" REBAR WITH SURVEY CAP MARKED "RLS3977"
- DENOTES FOUND SURVEY MONUMENT

NOTES:

1 MINOR DRAINAGE AND UTILITY EASEMENTS ARE HEREBY ESTABLISHED 8' WIDE ON THE INTERIOR SIDE OF ALL LOT LINES AND RIGHT-OF-WAY (EXCEPT WHERE MAJOR DRAINAGE EASEMENTS ARE LOCATED)

2 TOTAL PLATTED ACR: 40.70 ACRES; LOTS 28 20 ACRES, DEDICATED PUBLIC RIGHT-OF-WAY 12.50 ACRES

3 ANY MAJOR DRAINAGE EASEMENTS SHOWN HEREON SHALL BE KEPT FREE OF ALL OBSTRUCTIONS INCLUDING BUT NOT LIMITED TO BUILDINGS, WALLS, FENCES, HEDGES, TREES, AND SHRUBS. THESE EASEMENTS GRANT TO ALL PUBLIC AUTHORITIES THE RIGHT TO CONSTRUCT, OPERATE, MAINTAIN, INSPECT AND REPAIR SUCH IMPROVEMENTS AND STRUCTURES AS IT DEEMS EXPEDIENT TO FACILITATE DRAINAGE FROM ANY SOURCE.

4. NON-ACCESS EASEMENTS ARE HEREBY ESTABLISHED ALONG THE FIRST FIFTY FEET OF CORNER LOTS OR AS INDICATED HEREON



PREPARED BY:
ARLETH & ASSOCIATES

382 MAIN STREET
DEADWOOD, SD 57732
605-578-1637

JOB NO
03-0054

DATE FEBRUARY 2005
SCALE 1"=100'
DRAWN

APPROVED JMA
DWC GS-05062005

PREPARED FOR
DREAM DESIGN INTERNATIONAL, INC
639 KANSAS CITY STREET, SUITE 4
RAPID CITY, SOUTH DAKOTA 57701
(605) 848-0638