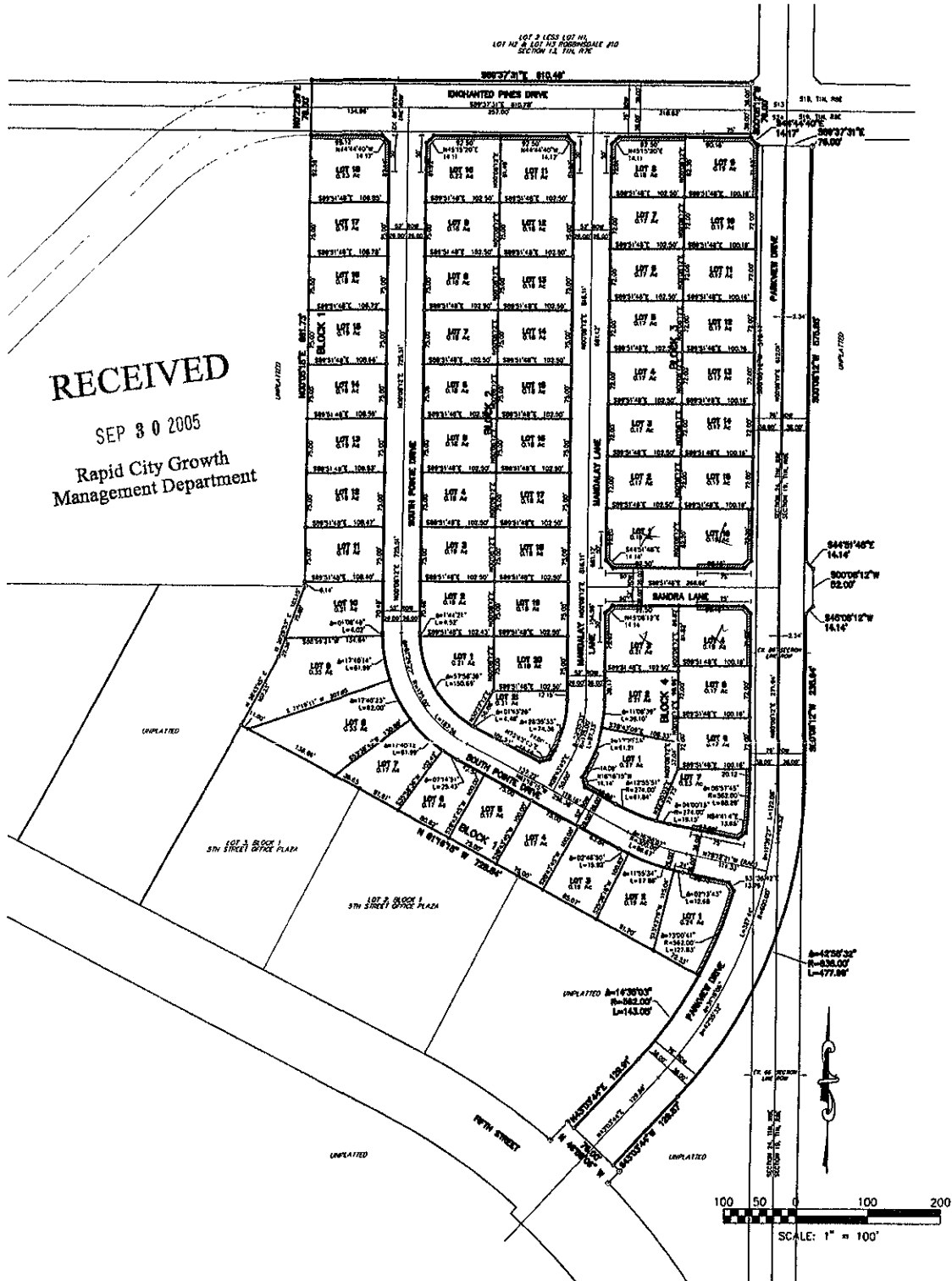


SOUTH POINTE SUBDIVISION

LOTS 1 THRU 18, BLOCK 1; LOTS 1 THRU 21, BLOCK 2; LOTS 1 THRU 18, BLOCK 3;
LOTS 1 THRU 7, BLOCK 4; AND DEDICATED RIGHT-OF-WAY
A PORTION OF THE E1/2NE1/4 SECTION 24
TOWNSHIP 1 NORTH, RANGE 7 EAST, B.H.M.,
PENNINGTON COUNTY, CITY OF RAPID CITY, SOUTH DAKOTA



RECEIVED
 SEP 30 2005
 Rapid City Growth
 Management Department

NOTES:

- NOTES:**
- Denotes set 5/8" rebar with survey cap marked "ARLETH 3977".
 - ⊙ Denotes Found Survey Monument w/cap as noted.
 - ⊘ Denotes Non-Access Easement per this Plot
 - ⊚ Denotes Drainage Easement per this Plot
1. MINOR DRAINAGE AND UTILITY EASEMENTS ARE HEREBY ESTABLISHED 8' WIDE ON THE INTERIOR SIDE OF ALL LOT LINES AND RIGHT-OF-WAY. (EXCEPT WHERE MAJOR DRAINAGE EASEMENTS ARE LOCATED)
 2. TOTAL PLATTED AREA: 18.34 ACRES, LOTS: 1181 ACRES; DEDICATED PUBLIC RIGHT-OF-WAY: 6.53 ACRES.
 3. ANY MAJOR DRAINAGE EASEMENT SHOWN HEREON SHALL BE KEPT FREE OF ALL OBSTRUCTIONS INCLUDING BUT NOT LIMITED TO BUILDINGS, WALLS, FENCES, HEDGES, TREES, AND SHRUBS. THESE EASEMENTS GRANT TO ALL PUBLIC AUTHORITIES THE RIGHT TO CONSTRUCT, OPERATE, MAINTAIN, INSPECT AND REPAIR SUCH IMPROVEMENTS AND STRUCTURES AS IT DEEMS EXPEDIENT TO FACILITATE DRAINAGE FROM ANY SOURCE.
 4. NON-ACCESS EASEMENTS ARE HEREBY ESTABLISHED ALONG THE FIRST FIFTY FEET OF CORNER LOTS OR AS INDICATED HEREON.
 5. ALL BUILDERS SHALL MAINTAIN EXISTING DRAINAGE FACILITIES IN ACCORDANCE TO APPROVED CONSTRUCTION ACREAGE SHOWN ON LOTS INCLUDE EASEMENTS.
 6. PLANS. (RAPID CITY ENG. DIV REQUESTED NOTE)